

## Reproductions of USA C76 Moon-landing Stamp

Don Hillger, Garry Toth, and Peter Hoffman



The USA Scott C76 (Michel 990) "First Man on the Moon" stamp was issued within months of the 20 July 1969 first Moon landing. It was later reproduced on many postal items from around the world. A checklist of those items was compiled (by the third author) and published in the June 1999 issue of *Orbit* (no. 42). Now 20 years later, this article updates that list and features selected examples of stamps with full or partial reproductions of, or designs based on, the C76 stamp.

### USA C76

Much has been written about USA C76 and this article does not repeat all that. We will, however, present some of our own comments on the stamp design.

Images of Earth floating low on the lunar horizon with the blackness of space behind are commonly called "Earthrise" images. In the context of the Apollo missions, the term does need some clarification, though. All Earthrise images photographed during the Apollo missions were taken while the astronauts (either the team of three together or the command module pilot alone) were orbiting the Moon and saw Earth rise from below the lunar horizon. No such images were seen by astronauts on the lunar surface, although a few times they did see (and photographed) Earth high in the lunar sky. For the purposes of this article, we consider Earthrise images to be those in which Earth appears low on the lunar horizon, having just risen into view (or, alternately, setting and soon to disappear from view). The USA C76 stamp is a prime example of an Earthrise as it might be seen from the surface of the Moon.

There are, however, two problems with the Earth image on C76. First, the depiction, while very appealing, would require the astronauts to be on the "edge" of the Moon (the boundary between the "near" and "far" sides). This is because the Moon is locked into its Earth orbit so that one side (the near side) is always visible from Earth, while the other side (the far side) remains hidden. Therefore, only in the boundary at the "edge" of the Moon could Earth be

seen low on the horizon from the lunar surface. All the Apollo missions, however, landed far from that lunar boundary zone.

Second, to the authors' knowledge, the depiction of Earth in C76 is not based on any Earth photograph taken during any Apollo mission. The details of Earth and its cloud patterns as seen in the stamp appear instead to be an artist's rendition of white clouds (and possibly ice-covered surfaces) and blue oceans. No brownish tones to represent land masses are visible on the C76 stamp.

Below is the signed artwork produced by Paul Calle for the USA C76 stamp. This image, or portions of it, appears on several countries. Those items are included in the table below, in addition to those which include the direct reproductions of the C76 stamp.



### C76 reproductions on other postal items

The remainder of this article will document the various philatelic reproductions not only of the full USA C76 stamp (stamp-on-stamp items), but also reproductions of the "first-step-on-the-Moon" as depicted on the C76 stamp through Paul Calle's artwork. While many postal items reproduce the entire C76 stamp, others contain images that, although not identical to the C76 image, are clearly based on it or its artwork. The table below lists all such items known to the authors, after which a few examples will be presented. No items from the USA are included in this article, as most of them are related to the C76 stamp or its derivatives (imperforates, FDCs, etc.)

### A few examples of C76 reproductions on non-USA postal items

On the next page is an image of the three Apollo-11 astronauts (Armstrong, Aldrin, and Collins) and Postmaster General Winton Blount behind a large image of the C76 stamp, as shown on a stamp issued by Antigua and Barbuda in 1994 for the 25<sup>th</sup> anniversary of the first manned Moon landing. As noted in small text on the left side of the stamp, the image was taken at the "First Day Ceremony" for the "Apollo-11 stamp". Additional text on the stamp reads "Made from a die carried to the Moon". A stamp from Sierra Leone, also issued in 1994 for the same anniversary, shows the astronauts, apparently at the same FDC ceremony, each holding a full sheet of 32 C76 stamps, although the details of the sheet are not discernable.



Antigua and Barbuda (Scott 1823, Michel BL300) 1994; and Sierra Leone (Scott 1729f, Michel 2159) 1994



A nice reproduction of USA C76 is found on a souvenir sheet from Micronesia from 1994, issued for the 25<sup>th</sup> anniversary of the first Moon landing. Another image of C76 is found on a 1994 stamp from Uruguay (issued for the 25<sup>th</sup> anniversary of the Moon landing). That stamp also includes an image of another stamp issued by Uruguay itself in 1970 (Scott C372, Michel 1174), which has a first-step-on-the-Moon design based on the C76 image or artwork.

a Paraguay MS4 from 1990, above. Other postal items with images of this stamped cover are noted in the table below.

A card from Austria from 1970 has the USA C76 stamp reproduced in its pictorial cancel. The black and white reproduction was used on the 1<sup>st</sup> anniversary of the first Moon landing. This is the only use of the C76 design in a cancel known to the authors.



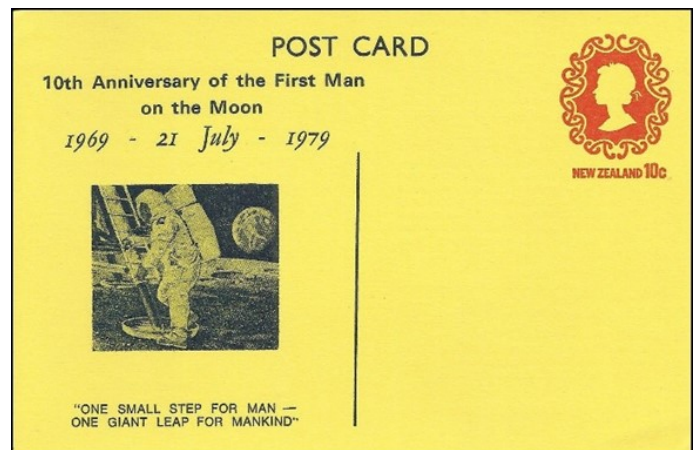
Micronesia (Scott C49 Michel BL13) 1994; and Uruguay (Scott 1519c, Michel 2011) 1994



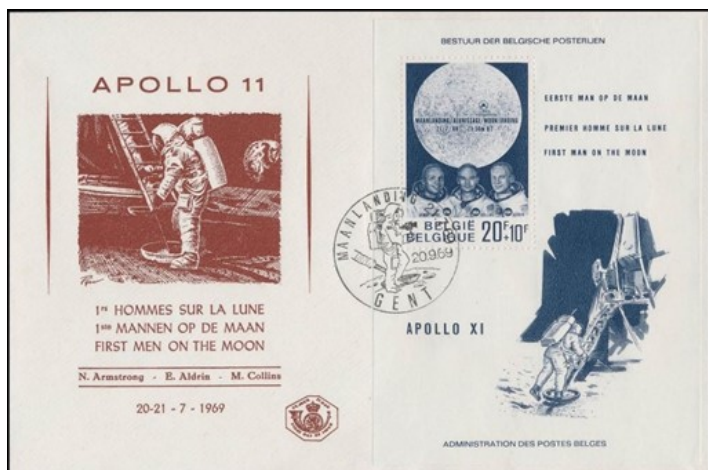
Below is a postal card from New Zealand from 1979 for the 10<sup>th</sup> anniversary of the first Moon landing. The image in the cachet is clearly based on the design of the USA C76 stamp. Similar images are found in the cachets of other postal items, as noted in the table below.



Above is a stamp from Gambia from 1983, for the 200<sup>th</sup> anniversary of manned flight, which includes a reproduction of USA C76. The C76 stamp in that reproduction is part of an Apollo-15 flown cover with a cancel/launch date of 26 July 1971 and a cancel/recovery date of 7 August 1971. [Note: These are the infamous flown covers that caused a scandal at NASA over carrying postal covers to the Moon's surface, resulting in the end of the spaceflight careers of the Apollo-15 astronauts.] Reproductions of this type of cover can be found on several postal items, including one of 5 labels from



In one final example, a similar cachet but in brown is found on a FDC from Belgium for *Scott B846*, a souvenir sheet of one stamp commemorating the first manned Moon landing. The lower-right margin of B846 includes an image of the first step on the Moon, but from a very different perspective than the depiction in the C76 stamp. For this reason, B846 is not included in the table below.



### Summary

This article features selected postal items with reproductions of the USA C76 stamp or with designs based on that stamp or its artwork by Paul Calle. An online and ever-growing list of such postal items, which also includes many more Earthrise images, is available at <http://rammb.cira.colostate.edu/dev/hillger/satellite-images.htm#generic-earthrise>.

In that web page, the USA C76-related items are highlighted in light green to differentiate them from the numerous other generic Earthrise items also found in that page, many of which were included in an article in the January 2015 issue of *Orbit* (no. 104). Readers who are aware of additional philatelic reproductions of the C76 stamp are invited to inform the authors of them at the email addresses below.

### Biographical notes

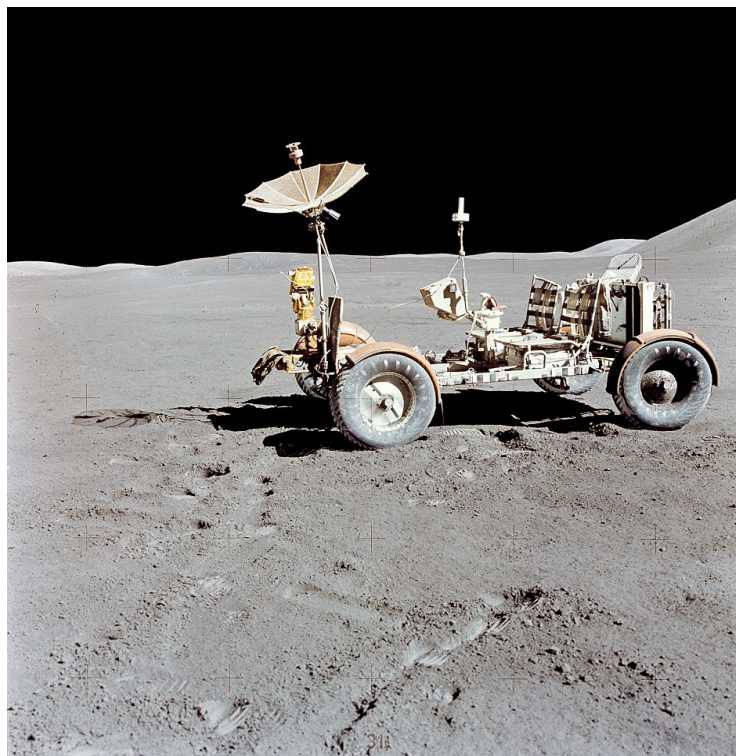
The authors have researched and written extensively on the subjects of weather, climate, and un-manned satellites on stamps and covers, as well as other topics. Their Un-manned Satellite Philately website can be found at <http://rammb.cira.colostate.edu/dev/hillger/satellites.htm>. For a complete list and electronic reproductions of their publications, see <http://rammb.cira.colostate.edu/dev/hillger/stamp-articles.htm>. Email correspondence with the authors is welcome, using the addresses below.

Don Hillger, PhD, is a research meteorologist with the National Oceanic and Atmospheric Administration (NOAA) and holds a cooperative position at Colorado State University. Send correspondence to [don.hillger@colostate.edu](mailto:don.hillger@colostate.edu)

Garry Toth, MSc, now retired, worked many years at the Meteorological Service of Canada. Send correspondence to [gmt.varia@gmail.com](mailto:gmt.varia@gmail.com)

Peter Hoffman, MS, now retired, was part of the Apollo Lunar Module guidance team and now contributes to the *Scott* catalogs and some online stamp-related websites. Send correspondence to [PeterH5292@aol.com](mailto:PeterH5292@aol.com)

### A Spacecraft With Wheels *cont from p20*



Above the Apollo 15 LRV as left on the Moon's surface

Our Features Writer : Nik Steggall on the LRV at the RAF Cosford Museum in the early 1980's. (The vehicle was a 1/6th G engineering model resting on a subframe not on its mesh tyres).



Table: Reproductions of, or Designs Based on, USA C76 on non-USA Postal Items

Country	Catalog Number	Type of Item	Year	Description
Ajman	Mi514 (and derivatives)		1970	Design based on C76
Ajman	BL186 (and derivatives)	On stamp of SS1	1970	Design based on C76
Antigua and Barbuda	1822e (Mi2045)	One stamp from MS6 (1822a-f)	1994	Reproduction of C76 stamped cover
Antigua and Barbuda	1823 (BL300)	In lower margin of SS1	1994	Large reproduction of C76
Austria	None	Pictorial cancel on Apollo-11 1 <sup>st</sup> anniv. card	1970	Black-and-white reproduction of C76
Barbuda	1545e (Mi1716)	One stamp of MS6 (1545a-f), Antigua 1822e overprinted	1995	Reproduction of C76 stamped cover
Barbuda	1545G (BL250)	In lower margin of SS1	1995	Large reproduction of C76
Belgium	B846 fdc (BL40 fdc)	Cachet (only) on FDC	1969	Design based on C76
Equatorial Guinea	BL109	On stamp of SS1	1974	Reproduction of C76 stamped cover
Gambia	496 (Mi494)		1983	Reproduction of C76 stamped cover
Gambia	496a (BL?)	MS4 (2x (495-496))	1983	Reproduction of C76 stamped cover
Guyana	2273i (Mi3152)	One stamp of MS9 (2273a-i)	1990	Partial reproduction of C76
Guyana	2551i (Mi3679)	One stamp of MS9 (2551a-i), 2273 overprinted	1992	Partial reproduction of C76
Maldive Islands	Unknown ss1 (BL?)	On stamp and in lower margin of SS1	2019	Two reproductions of C76
Manama	MiA584 (and derivatives)	Gold foil	1971	Design based on C76
Manama	BL124 (and derivatives)	On stamp of imperforate SS1	1971	Design based on C76
Micronesia	C49 (BL13)	On stamp of SS1	1994	Reproduction of C76
Micronesia	856c (Mi1940), 856d (Mi1941)	Two stamps of block of 4 (856a-d)	2005	Two reproductions of C76 stamped covers
New Zealand	None	Cachet (only) on Apollo-11 10 <sup>th</sup> anniv. postcard	1979	Design based on C76
Paraguay	C384 (Mi3597)		1974	Two reproductions of C76 stamped covers
Paraguay	1673 (BL279)	On stamp and in margins of SS1	1976	Reproduction of C76 stamped cover, and many reproductions of C76 (in margins)
Paraguay	1696 (BL286)	On stamp of SS1	1976	Reproduction of C76
Paraguay	2329a label (Mi4486 label)	Label from MS4 (4x 2329 + 5 labels)	1990	Reproduction of C76 stamped cover
Ras Al Khaima	Mi475 (and derivatives)		1970	Reproduction of C76
Ras Al Khaima	MiA714 fdc and MiB714 fdc	Cachet (only) on FDC	1971	Reproduction of C76
Sierra Leone	622 (BL21)	On stamp of SS1	1984	Design based on C76
Sierra Leone	1729f (Mi2163)	One stamp of MS6 (1929a-f)	1994	Reproduction of sheets of 32 C76 stamps
Sierra Leone	4377 (BL1237)	In lower-right margin of SS1	2017	Partial reproduction of C76
Tonga	548 (Mi858)		1983	Reproduction of C76 stamped cover
Tonga	729 (Mi1101)		1989	Reproduction of C76 stamped cover
Tonga	730k (Mi1112)	One stamp of MS12 (730a-l)	1989	Reproduction of C76 stamped cover
United States items are not included here				
Uruguay	C372 (Mi1174)		1970	Design based on C76
Uruguay	1519c (Mi2011)	One stamp of MS4 (1519a-d)	1994	Reproduction of C76
Yemen Mutawakelite Kingdom	Mi789 (and derivatives)		1969	Design based on C76