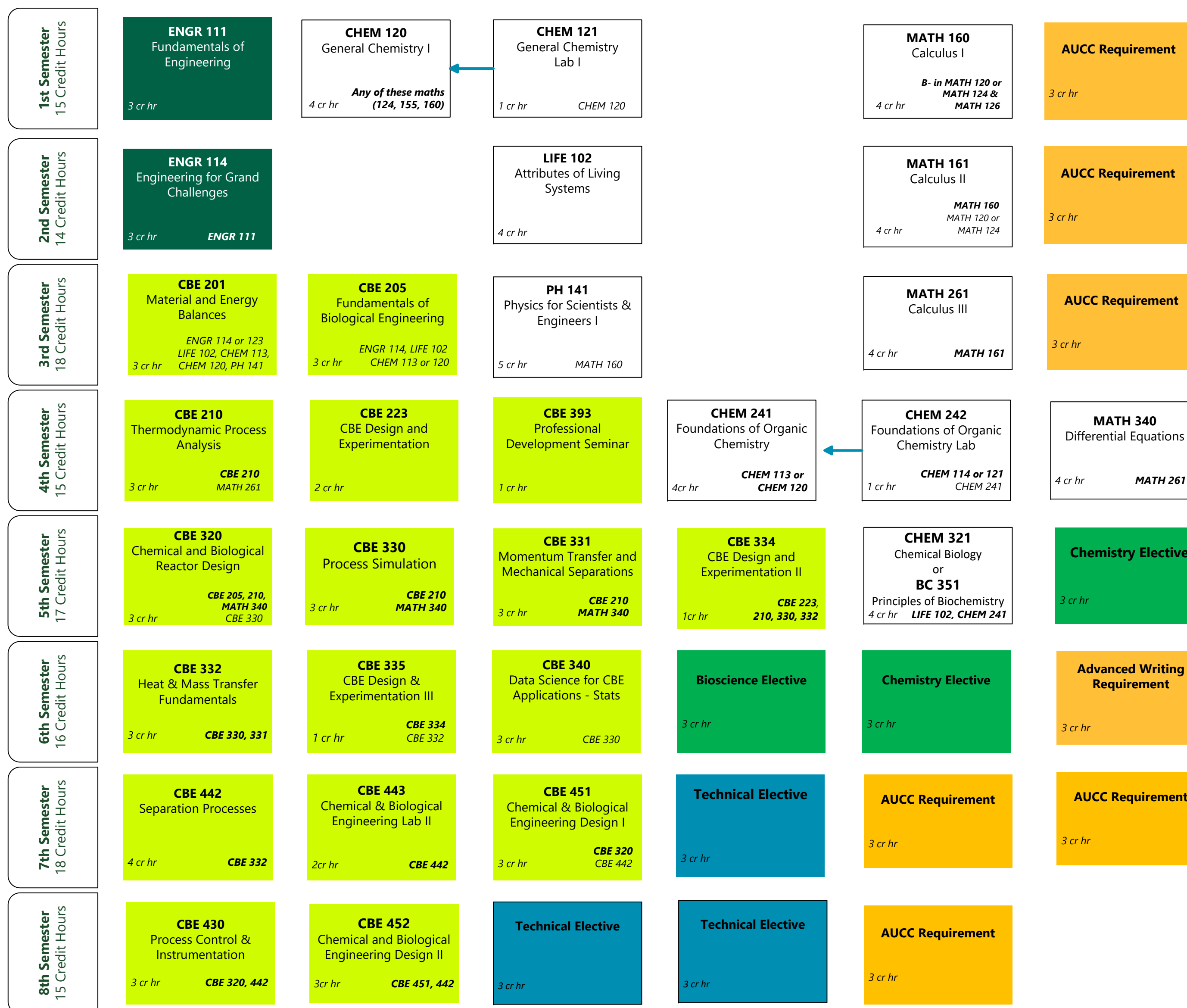




**SCHOOL OF BIOMEDICAL
AND CHEMICAL ENGINEERING**
COLORADO STATE UNIVERSITY

**Bachelor of Science in
Chemical and Biological
Engineering**



| | |
|--|-------------------------------|
| Engineering First-Year Coursework | 130 Total Credit Hours |
| Dept./Major Coursework | |
| Coursework Outside Department | |
| Science Technical Elective* | |
| Engineering Technical Elective* | |
| Technical Elective* | |
| All-University Core Curriculum** | |
| Course | ← Lab associated with course |
| <p>Course Prefix & Number Course Title</p> <p># Credit Hours Co-requisite Prerequisite</p> | |

***All Technical Electives:** Course options can be found in the *CSU Catalog*. Note: Some technical electives may require department approval.

****All-University Core Curriculum:** Course options available in the *CSU Catalog*.

This flowchart is provided as a guide only. Programs of study, course offerings, and prerequisites may change during the year. The CSU catalog is the official source of academic information. Honors Track 1 and Honors Track 2 check in with your major and honors advisors for your individual plan.

Undergraduate students interested in a CSU graduate degree in engineering could use up to 9 credits of 500-level class work towards an Accelerated Master's Program. Please contact your advisor for additional information.