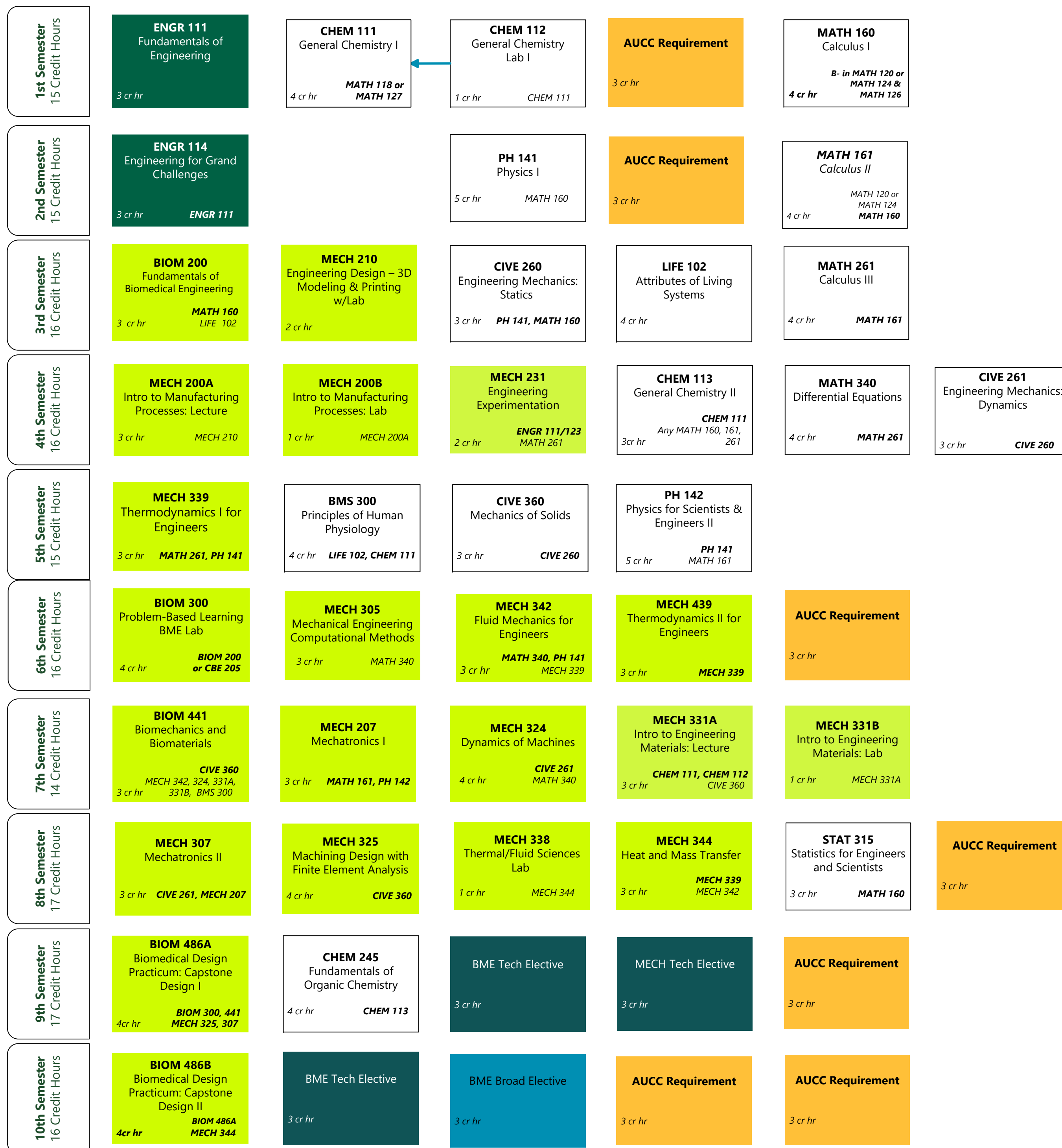




**SCHOOL OF BIOMEDICAL  
AND CHEMICAL ENGINEERING**  
COLORADO STATE UNIVERSITY

**Bachelor of Science in  
Biomedical Engineering +  
Mechanical Engineering**



Engineering First-Year Coursework	<b>157 Total Credit Hours</b>
Dept./Major Coursework	
Coursework Outside Department	
Science Technical Elective*	
Engineering Technical Elective*	
Broad Technical Elective*	
All-University Core Curriculum**	
Course	← Lab associated with course

**Course Prefix & Number**  
Course Title

# Credit Hours      Co-requisite  
Prerequisite

**\*All Technical Electives:** Course options can be found in the *CSU Catalog*. Note: Some technical electives may require department approval.

**\*\*All-University Core Curriculum:** Course options available in the *CSU Catalog*.

This flowchart is provided as a guide only. Programs of study, course offerings, and prerequisites may change during the year. The CSU catalog is the official source of academic information. Honors Track 1 and Honors Track 2 check in with your major and honors advisors for your individual plan.

Undergraduate students interested in a CSU graduate degree in engineering could use up to 9 credits of 500-level class work towards an Accelerated Master's Program. Please contact your advisor for additional information.