

SBME Scholarship for Leadership and Innovation

This scholarship supports graduate and undergraduate students pursuing careers in biomedical engineering who show a commitment to leadership and excel as creative problem-solvers.

2022/23 Award Winner



Joyce Bohn is a third-year biomedical engineering and mechanical engineering student. Having suffered with Type 1 diabetes, Joyce has first-hand experience utilizing medical devices and their benefits. It's no wonder Joyce has completed three internships with Medtronic, an American medical device company.

Joyce is the president of the Tau Beta Pi Engineering Honors Society at CSU and has taken the lead for events including *Introduce a Girl to Engineering Day* and *Little Shop of Physics Experiment Day*. She also presented along with three additional speakers, *A Day in the Life of an Intern*, explaining members how to apply for internships and providing examples of the type of work involved.

Previous award winners on following pages.



SCHOOL OF BIOMEDICAL
ENGINEERING
COLORADO STATE UNIVERSITY

SBME Scholarship for Leadership and Innovation

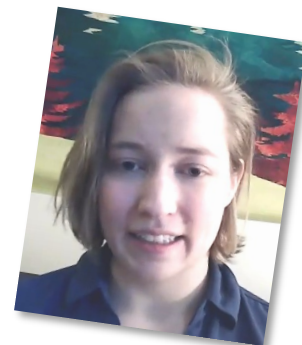
2021/22 Award Winners



Michelle Hefner (BME+CBE) has served as the president for the Society of Hispanic Professional Engineers (SHPE) since 2019. She also serves as an Engineering Student Ambassador. Michelle makes a big impact helping other students as an organic chemistry peer tutor and Calculus II learning assistant.

Amy Kiesling (BME+CBE) has served on the executive board of the Biomedical Engineering Society Student Chapter since her first year at CSU and has continued to take on roles with increased responsibility. She is

currently the BMES Chapter president and has taken on the challenge for conducting unique virtual events during the COVID crisis. The most memorable being a virtual outreach experienced for middle school students.



2020/21 Award Winners



Michael Truong is a third-year Ph.D. student who, under advisor Dr. Zhijie Wang, is conducting research on right heart failure. He examines the biomechanical mechanisms of, and instructs stem cell therapies for, right heart failure. Truong has a long history of leadership, including founding and actively promoting the mission of Team HBV, a student organization dedicated to hepatitis B virus education at UC Davis. He has also served as the inaugural Graduate Liaison Officer of BMES, actively connecting graduate students with professional development resources and industry members.

Faith Otieno (BME+EE) has consistently contributed in service, innovation, and leadership. One of Faith's goals is to give back, especially to low-income communities. After high school, she took a gap year to work with her mother on various medical research and fieldwork projects in her home country of Kenya. At CSU, she has helped found the Engineering Entrepreneurship Club and has been involved with the Fall Cleanup service event in which CSU students help local residents clean their yards. To help fund her studies, Faith works 20 hours a week.



SBME Scholarship for Leadership and Innovation

2019/20 Award Winner



Sarah Maclean received the SBME Scholarship for Leadership and Innovation. This scholarship was created to support biomedical engineering students who excel as creative problem-solvers and show a commitment to leadership.

Maclean was elected to serve on the BMES Student Chapter executive board in her first semester at CSU. Since then, she has held several executive positions leading up to the role of vice president. In her leadership roles, she created the BMES Faculty Meet and Greet that eventually grew into a very successful networking mixer, bridging the gap between CSU students, faculty, and local industry members. In addition, she led her sorority, Kappa Delta.

2018/19 Award Winner



Natalie Rios serves as the outreach coordinator for the Society of Women Engineers (SWE) and manages 12 team members. She uses the Gallup Strength Finder curriculum to organize subcommittees based on identified strengths so members can collaborate and thrive. Rios was instrumental in utilizing *Slate*, CSU's admission platform, for their annual *Introduce a Girl to Engineering Day* event registration. Through this platform, SWE can gauge the effectiveness of their outreach to middle school girls by identifying which participants apply to CSU for engineering.

2017/18 Award Winner

Tyler Daniel has demonstrated leadership skills working in the Therapeutic Materials and Biointerfacial Research Laboratory at CSU, attaining his Eagle Scout rank in the Boy Scouts of America, and serving as a resident assistant on campus. A former Daniels Scholarship recipient, Tyler has also worked every semester, often working multiple jobs. After graduation, he hopes to work in genetics, specifically DNA manipulation, to help cure cancer and other life-long diseases.



SBME Scholarship for Leadership and Innovation

2016/17 Award Winner



Hannah Robinson demonstrated leadership in designing a new lab for students taking machine dynamics. Robinson's lab allows students to design a four-bar mechanism representing components of the human knee and testing their design on 3D printed bones. In the future, she hopes to work with a medical device company and utilize her background to improve patient care.

2015/16 Award Winner

Hannah Mikelson served as president of the Society of Women Engineers-CSU Chapter and collegiate senator for the Society of Women Engineers-Region I (covering the central region of the U.S.). In addition, she participated in a co-op at Zimmer Biomet, an internship at Osypka Medtec and has accepted a full-time offer to be a quality engineer after she graduates in May 2018.



2014/15 Award Winners



Craig Ewell is a first-generation student who was raised by a single parent and who held various leadership roles on campus. As Craig once posted on social media, "From start to finish, CSU has been nothing but a blessing in my life! I have loved every moment of my time here. I am and will always be a RAM for life!" Craig works as an electronic sales engineer for Phoenix Contact.

Megan Rives is a single mom who is also a first-generation student. Her strong academics, commitment to her professional field, and her ability to overcome life's obstacles demonstrate the spirit of the SBME Scholarship. Megan spent her summers in college working as an engineering intern at Terumo BCT, Tolmar Inc., and Woodward, Inc. After graduating from CSU, she accepted a mechanical engineering position at Woodward, Inc.

