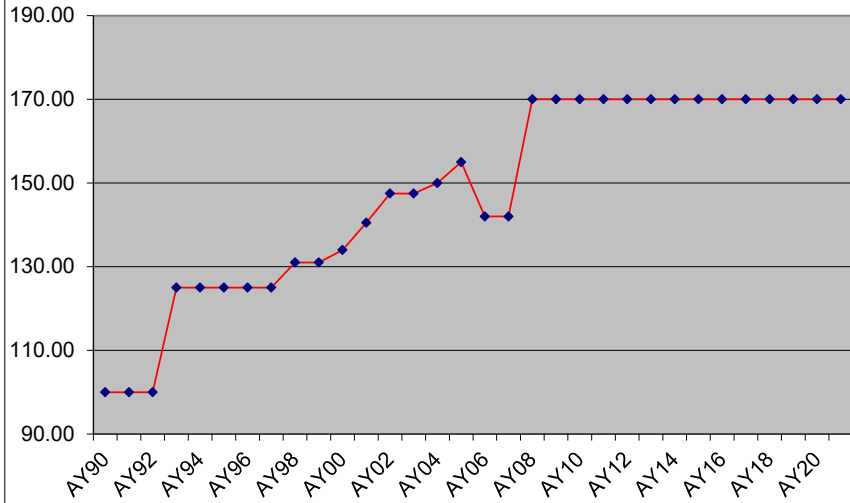


Student Charges for Technology

College of Engineering
Colorado State University

Charge per Semester
(first implemented in 1989-1990)



Academic Year	Academic Year	Semester Charge	% increase	since inception	avg. annual	
AY90	1989 - 1990	100.00				1
AY91	1990 - 1991	100.00	0.0%	0.0%	0.0%	2
AY92	1991 - 1992	100.00	0.0%	0.0%	0.0%	3
AY93	1992 - 1993	125.00	25.0%	25.0%	6.3%	4
AY94	1993 - 1994	125.00	0.0%	25.0%	5.0%	5
AY95	1994 - 1995	125.00	0.0%	25.0%	4.2%	6
AY96	1995 - 1996	125.00	0.0%	25.0%	3.6%	7
AY97	1996 - 1997	125.00	0.0%	25.0%	3.1%	8
AY98	1997 - 1998	131.00	4.8%	31.0%	3.4%	9
AY99	1998 - 1999	131.00	0.0%	31.0%	3.1%	10
AY00	1999 - 2000	134.00	2.3%	34.0%	3.1%	11
AY01	2000 - 2001	140.50	4.9%	40.5%	3.4%	12
AY02	2001 - 2002	147.50	5.0%	47.5%	3.7%	13
AY03	2002 - 2003	147.50	0.0%	47.5%	3.4%	14
AY04	2003 - 2004	150.00	1.7%	50.0%	3.3%	15
AY05	2004 - 2005	155.00	3.3%	55.0%	3.4%	16
AY06	2005 - 2006	142.00	-8.4%	42.0%	2.5%	17
AY07	2006 - 2007	142.00	0.0%	42.0%	2.3%	18
AY08	2007 - 2008	170.00	19.7%	70.0%	3.7%	19
AY09	2008 - 2009	170.00	0.0%	70.0%	3.5%	20
AY10	2009 - 2010	170.00	0.0%	70.0%	3.3%	21
AY11	2010 - 2011	170.00	0.0%	70.0%	3.2%	22
AY12	2011 - 2012	170.00	0.0%	70.0%	3.0%	23
AY13	2012 - 2013	170.00	0.0%	70.0%	2.9%	24
AY14	2013 - 2014	170.00	0.0%	70.0%	2.8%	25
AY15	2014 - 2015	170.00	0.0%	70.0%	2.7%	26
AY16	2015 - 2016	170.00	0.0%	70.0%	2.6%	27
AY17	2016 - 2017	170.00	0.0%	70.0%	2.5%	28
AY18	2017 - 2018	170.00	0.0%	70.0%	2.4%	29
AY19	2018 - 2019	170.00	0.0%	70.0%	2.3%	30
AY20	2019 - 2020	170.00	0.0%	70.0%	2.3%	31
AY21	2020 - 2021	170.00	0.0%	70.0%	2.2%	32