

**Colorado State University
College of Engineering
History of Generated Credit Hours**

	96-97	97-98	98-99	99-00	00-01	01-02	02-03	03-04	04-05	05-06
Dean of Engineering										
Lower	4.0	19.0	49.0	10.0	4.0	4.0	132.0	5.0	0.0	0.0
Upper	2.0	0.0	0.0	0.0	60.0	18.0	0.0	0.0	0.0	4.0
UG	6.0	19.0	49.0	10.0	64.0	22.0	132.0	5.0	0.0	4.0
Grad I	0.0	0.0	0.0	0.0	0.0	0.0	0.0	2.0	23.0	0.0
Grad II	0.0	0.0	0.0	0.0	0.0	0.0	0.0	0.0	7.0	0.0
GR	0.0	0.0	0.0	0.0	0.0	0.0	0.0	2.0	30.0	0.0
Total	6.0	19.0	49.0	10.0	64.0	22.0	132.0	7.0	30.0	4.0
 Chemical Engineering										
Lower	500.0	555.0	694.0	810.0	321.0	475.5	483.0	405.0	375.0	366.0
Upper	1,398.0	1,320.1	1,416.4	1,477.2	1,191.3	1,090.6	957.1	908.0	848.0	712.0
UG	1,898.0	1,875.1	2,110.4	2,287.2	1,512.3	1,566.1	1,440.1	1,313.0	1,223.0	1,078.0
Grad I	654.0	713.5	405.7	521.0	280.0	279.2	169.0	170.0	112.0	59.0
Grad II	233.0	204.0	177.0	166.0	133.0	106.2	220.0	270.0	237.0	155.0
GR	887.0	917.5	582.7	687.0	413.0	385.4	389.0	440.0	349.0	214.0
Total	2,785.0	2,792.6	2,693.1	2,974.2	1,925.3	1,951.5	1,829.1	1,753.0	1,572.0	1,292.0

**Colorado State University
College of Engineering
History of Generated Credit Hours**

	96-97	97-98	98-99	99-00	00-01	01-02	02-03	03-04	04-05	05-06
Atmospheric Science										
Lower	0.0	0.0	0.0	0.0	96.0	0.0	0.0	0.0	19.0	26.0
Upper	727.0	457.0	457.0	568.0	443.0	496.0	528.0	482.0	349.0	278.0
UG	727.0	457.0	457.0	568.0	539.0	496.0	528.0	482.0	368.0	304.0
Grad I	1,122.7	1,159.0	1,065.5	1,217.0	1,352.0	1,125.0	1,036.8	1,127.0	1,120.0	1,036.5
Grad II	952.0	951.0	895.0	905.5	856.0	823.8	923.0	1,029.0	1,032.8	1,107.6
GR	2,074.7	2,110.0	1,960.5	2,122.5	2,208.0	1,948.8	1,959.8	2,156.0	2,152.8	2,144.1
Total	2,801.7	2,567.0	2,417.5	2,690.5	2,747.0	2,444.8	2,487.8	2,638.0	2,520.8	2,448.1
Civil Engineering										
Lower	2,436.0	2,632.0	2,945.0	2,699.0	3,173.0	3,203.5	3,215.0	2,932.0	2,895.0	2,349.0
Upper	5,314.8	5,123.0	5,332.0	4,575.0	5,229.1	5,666.0	5,568.0	5,771.0	5,975.9	6,331.0
UG	7,750.8	7,755.0	8,277.0	7,274.0	8,402.1	8,869.5	8,783.0	8,703.0	8,870.9	8,680.0
Grad I	2,252.0	1,845.0	1,659.0	1,578.0	1,564.8	1,650.0	2,081.0	2,016.8	2,095.0	1,811.0
Grad II	490.0	418.0	308.0	342.0	309.0	174.0	406.0	251.0	438.0	437.0
GR	2,742.0	2,263.0	1,967.0	1,920.0	1,873.8	1,824.0	2,487.0	2,267.8	2,533.0	2,248.0
Total	10,492.8	10,018.0	10,244.0	9,194.0	10,275.9	10,693.5	11,270.0	10,970.8	11,403.9	10,928.0

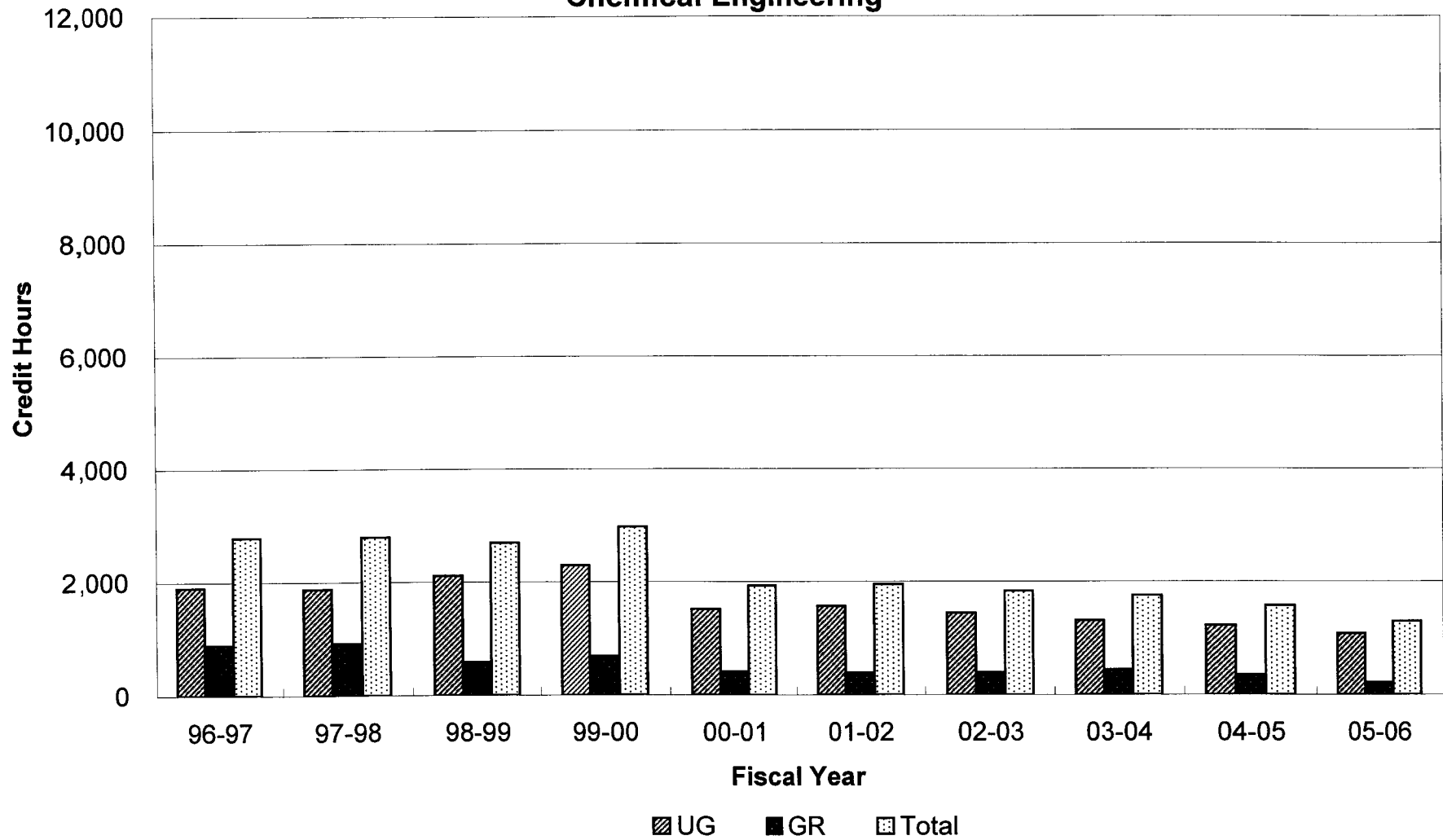
**Colorado State University
College of Engineering
History of Generated Credit Hours**

	96-97	97-98	98-99	99-00	00-01	01-02	02-03	03-04	04-05	05-06
Electrical and Computer Engineering										
Lower	1,798.0	1,879.0	1,941.0	2,414.0	2,372.0	2,445.0	2,515.0	2,377.0	2,088.0	1,726.0
UPper	2,473.0	2,502.0	2,542.0	2,464.0	2,623.6	3,146.0	3,311.0	3,416.0	3,023.0	2,267.0
UG	4,271.0	4,381.0	4,483.0	4,878.0	4,995.6	5,591.0	5,826.0	5,793.0	5,111.0	3,993.0
Grad I	677.0	802.0	678.0	1,277.0	1,250.0	1,627.0	1,522.0	1,461.0	1,341.0	1,083.0
Grad II	323.0	205.0	185.0	186.0	219.0	381.0	393.0	356.0	321.0	369.0
GR	1,000.0	1,007.0	863.0	1,463.0	1,469.0	2,008.0	1,915.0	1,817.0	1,662.0	1,452.0
Total	5,271.0	5,388.0	5,346.0	6,341.0	6,464.6	7,599.0	7,741.0	7,610.0	6,773.0	5,445.0
Mechanical Engineering										
Lower	1,607.0	1,787.0	1,601.0	1,737.0	1,771.0	1,869.0	1,837.0	1,943.0	1,546.0	1,902.0
Upper	3,503.0	3,280.7	3,708.0	4,071.0	3,993.9	4,374.0	4,560.0	4,789.0	4,669.2	5,007.0
UG	5,110.0	5,067.7	5,309.0	5,808.0	5,764.9	6,243.0	6,397.0	6,732.0	6,215.2	6,909.0
Grad I	702.0	572.0	683.0	473.0	680.0	826.0	1,173.0	1,104.0	1,285.0	1,312.1
Grad II	121.0	203.0	210.0	135.0	135.0	97.0	39.0	115.0	161.0	89.0
GR	823.0	775.0	893.0	608.0	815.0	923.0	1,212.0	1,219.0	1,446.0	1,401.1
Total	5,933.0	5,842.7	6,202.0	6,416.0	6,579.9	7,166.0	7,609.0	7,951.0	7,661.2	8,310.1

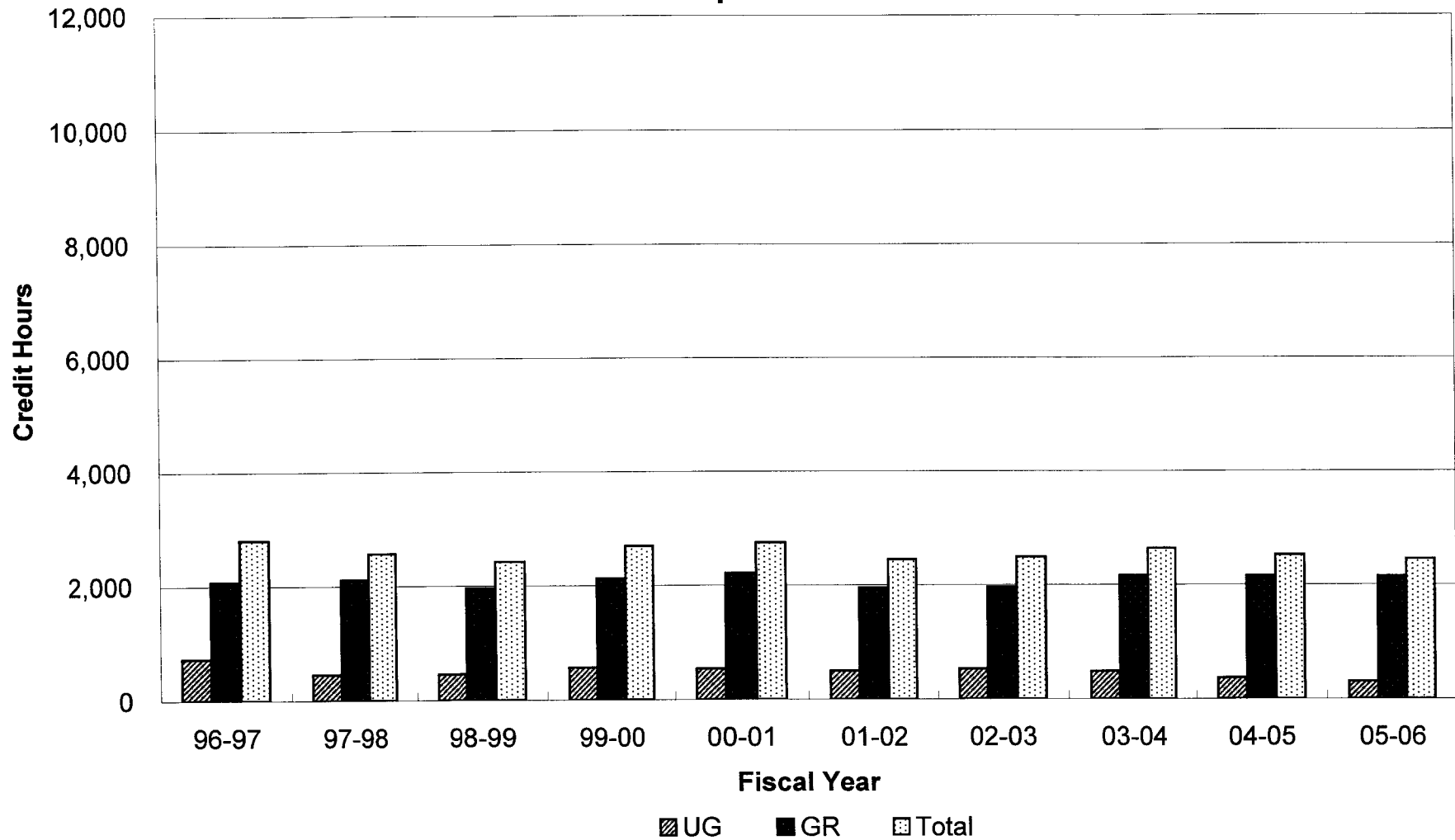
**Colorado State University
College of Engineering
History of Generated Credit Hours**

	96-97	97-98	98-99	99-00	00-01	01-02	02-03	03-04	04-05	05-06
Total College										
Lower	6,345.0	6,872.0	7,230.0	7,670.0	7,737.0	7,997.0	8,182.0	7,662.0	6,923.0	6,369.0
Upper	13,417.8	12,682.8	13,455.4	13,155.2	13,540.9	14,790.6	14,924.1	15,366.0	14,865.1	14,599.0
UG	19,762.8	19,554.8	20,685.4	20,825.2	21,277.9	22,787.6	23,106.1	23,028.0	21,788.1	20,968.0
Grad I	5,407.7	5,091.5	4,491.2	5,066.0	5,126.8	5,507.2	5,981.8	5,880.8	5,976.0	5,301.6
Grad II	2,119.0	1,981.0	1,775.0	1,734.5	1,652.0	1,582.0	1,981.0	2,021.0	2,196.8	2,157.6
GR	7,526.7	7,072.5	6,266.2	6,800.5	6,778.8	7,089.2	7,962.8	7,901.8	8,172.8	7,459.2
Total	27,289.5	26,627.3	26,951.6	27,625.7	28,056.7	29,876.8	31,068.9	30,929.8	29,960.9	28,427.2

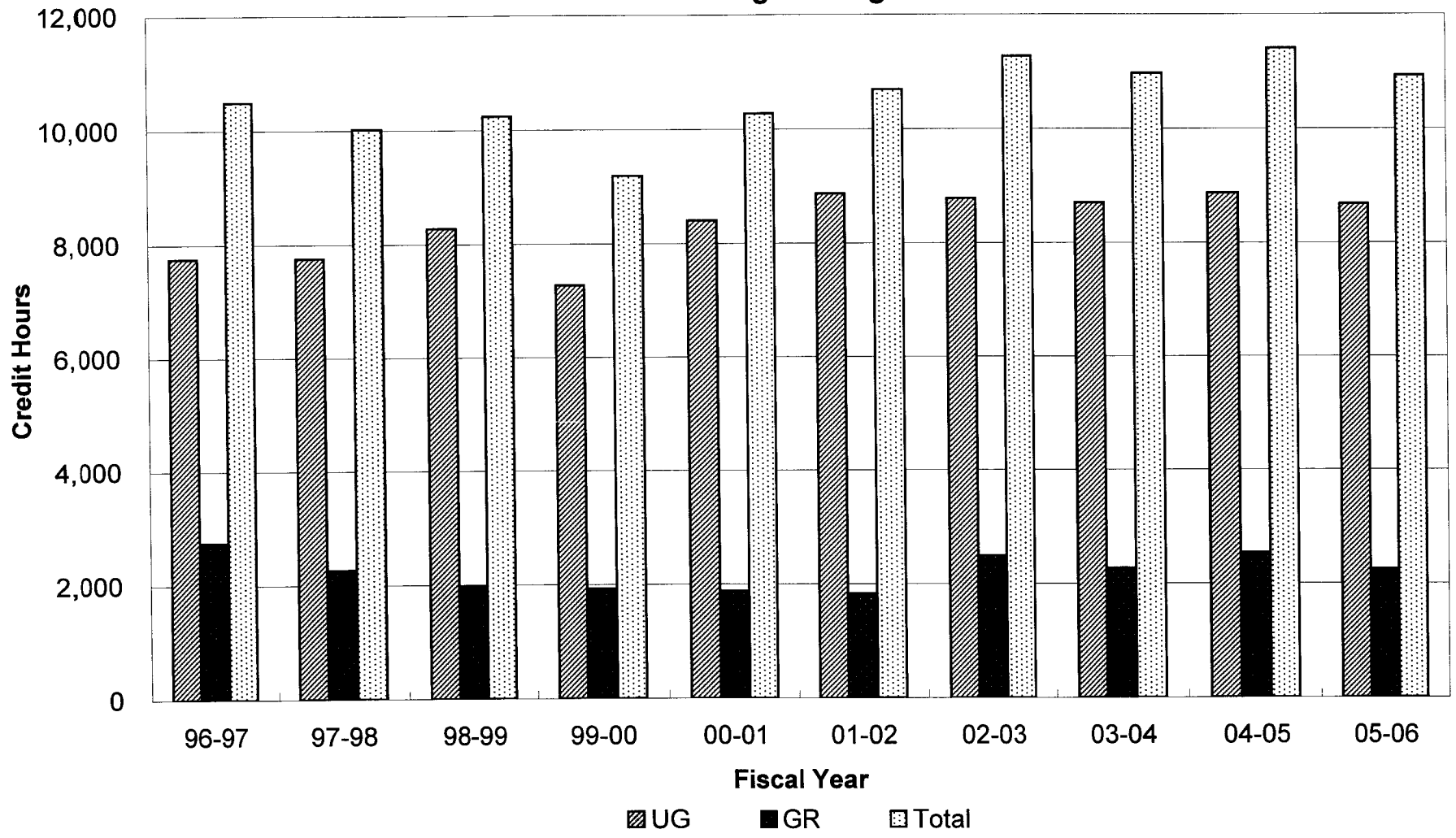
**Colorado State University
College of Engineering
Student Credit Hours by Course Level
Chemical Engineering**



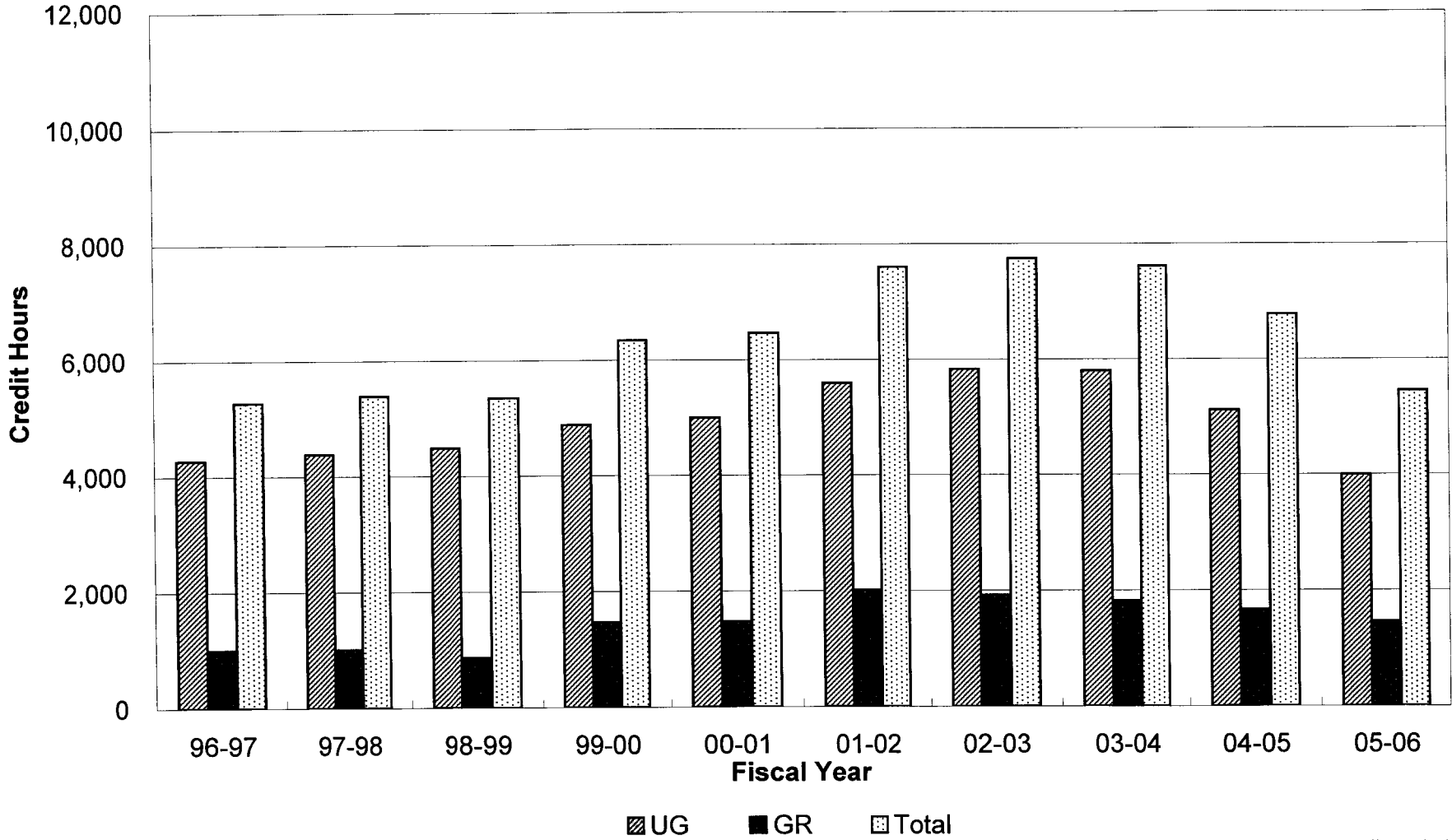
**Colorado State University
College of Engineering
Student Credit Hours by Course Level
Atmospheric Science**



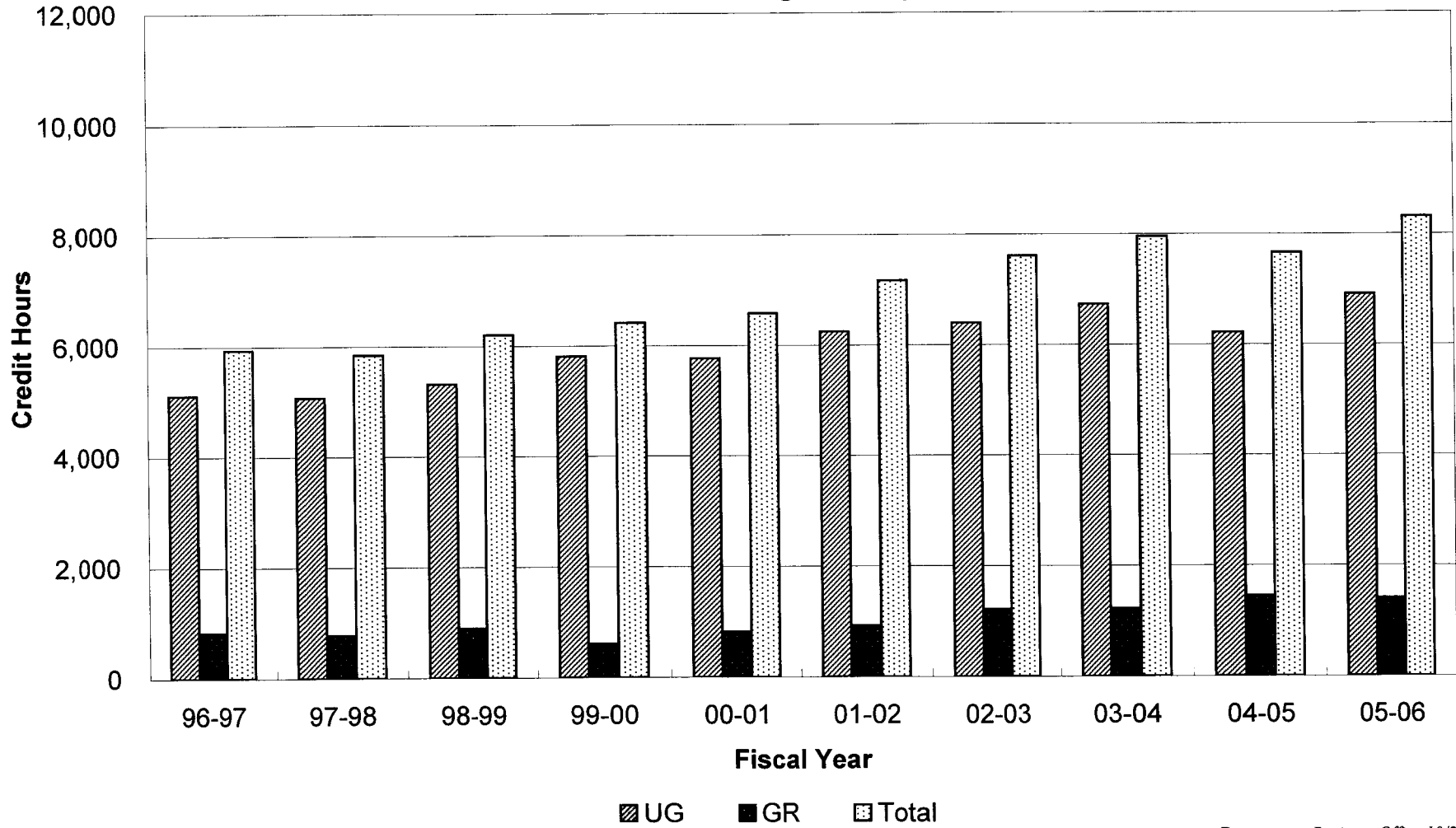
**Colorado State University
College of Engineering
Student Credit Hours by Course Level
Civil Engineering**



**Colorado State University
College of Engineering
Student Credit Hours by Course Level
Electrical and Computer Engineering**



**Colorado State University
College of Engineering
Student Credit Hours by Course Level
Mechanical Engineering**



**Colorado State University
College of Engineering
Student Credit Hours by Course Level
Total College**

