

**Colorado State University
College of Engineering
History of Generated Credit Hours**

	98-99	99-00	00-01	01-02	02-03	03-04	04-05	05-06	06-07	07-08
Dean of Engineering										
Lower	49.0	10.0	4.0	4.0	132.0	5.0	0.0	0.0	0.0	0.0
Upper	0.0	0.0	60.0	18.0	0.0	0.0	0.0	4.0	0.0	0.0
UG	49.0	10.0	64.0	22.0	132.0	5.0	0.0	4.0	0.0	0.0
Grad I	0.0	0.0	0.0	0.0	0.0	2.0	23.0	0.0	0.0	0.0
Grad II	0.0	0.0	0.0	0.0	0.0	0.0	7.0	0.0	0.0	0.0
GR	0.0	0.0	0.0	0.0	0.0	2.0	30.0	0.0	0.0	0.0
Total	49.0	10.0	64.0	22.0	132.0	7.0	30.0	4.0	0.0	0.0
Chemical Engineering										
Lower	694.0	810.0	321.0	475.5	483.0	405.0	375.0	366.0	468.0	686.0
Upper	1,416.4	1,477.2	1,191.3	1,090.6	957.1	908.0	848.0	712.0	601.0	677.6
UG	2,110.4	2,287.2	1,512.3	1,566.1	1,440.1	1,313.0	1,223.0	1,078.0	1,069.0	1,363.6
Grad I	405.7	521.0	280.0	279.2	169.0	170.0	112.0	59.0	209.0	119.0
Grad II	177.0	166.0	133.0	106.2	220.0	270.0	237.0	155.0	85.0	206.0
GR	582.7	687.0	413.0	385.4	389.0	440.0	349.0	214.0	294.0	325.0
Total	2,693.1	2,974.2	1,925.3	1,951.5	1,829.1	1,753.0	1,572.0	1,292.0	1,363.0	1,688.6

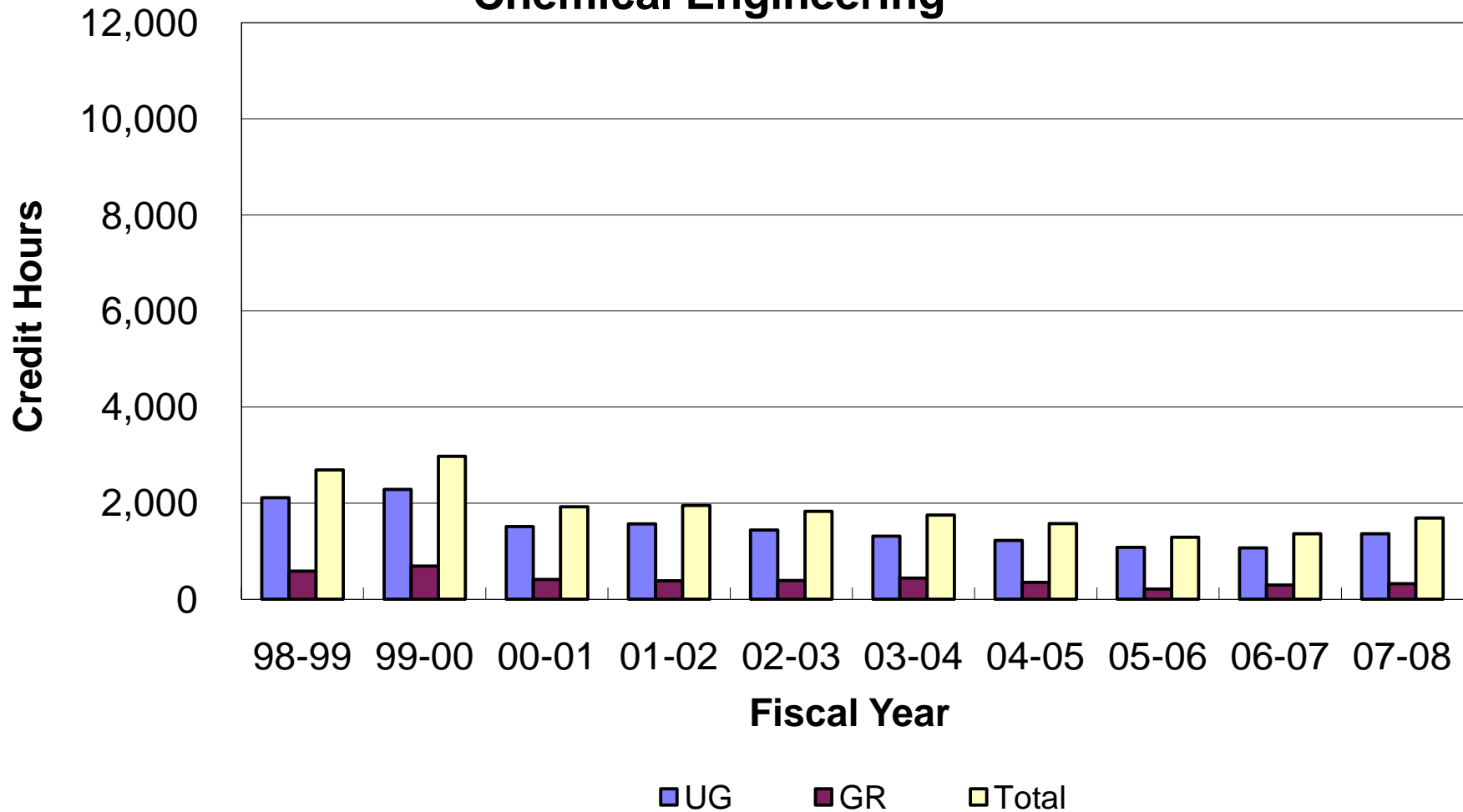
**Colorado State University
College of Engineering
History of Generated Credit Hours**

	98-99	99-00	00-01	01-02	02-03	03-04	04-05	05-06	06-07	07-08
Atmospheric Science										
Lower	0.0	0.0	96.0	0.0	0.0	0.0	19.0	26.0	0.0	0.0
Upper	457.0	568.0	443.0	496.0	528.0	482.0	349.0	278.0	266.0	286.0
UG	457.0	568.0	539.0	496.0	528.0	482.0	368.0	304.0	266.0	286.0
Grad I	1,065.5	1,217.0	1,352.0	1,125.0	1,036.8	1,127.0	1,120.0	1,036.5	986.0	773.0
Grad II	895.0	905.5	856.0	823.8	923.0	1,029.0	1,032.8	1,107.6	948.3	963.4
GR	1,960.5	2,122.5	2,208.0	1,948.8	1,959.8	2,156.0	2,152.8	2,144.1	1,934.3	1,736.4
Total	2,417.5	2,690.5	2,747.0	2,444.8	2,487.8	2,638.0	2,520.8	2,448.1	2,200.3	2,022.4
Civil Engineering										
Lower	2,945.0	2,699.0	3,173.0	3,203.5	3,215.0	2,932.0	2,895.0	2,349.0	2,436.0	2,775.0
Upper	5,332.0	4,575.0	5,229.1	5,666.0	5,568.0	5,771.0	5,975.9	6,331.0	6,202.0	5,212.0
UG	8,277.0	7,274.0	8,402.1	8,869.5	8,783.0	8,703.0	8,870.9	8,680.0	8,638.0	7,987.0
Grad I	1,659.0	1,578.0	1,564.8	1,650.0	2,081.0	2,016.8	2,095.0	1,811.0	1,781.0	1,857.0
Grad II	308.0	342.0	309.0	174.0	406.0	251.0	438.0	437.0	322.0	276.0
GR	1,967.0	1,920.0	1,873.8	1,824.0	2,487.0	2,267.8	2,533.0	2,248.0	2,103.0	2,133.0
Total	10,244.0	9,194.0	10,275.9	10,693.5	11,270.0	10,970.8	11,403.9	10,928.0	10,741.0	10,120.0

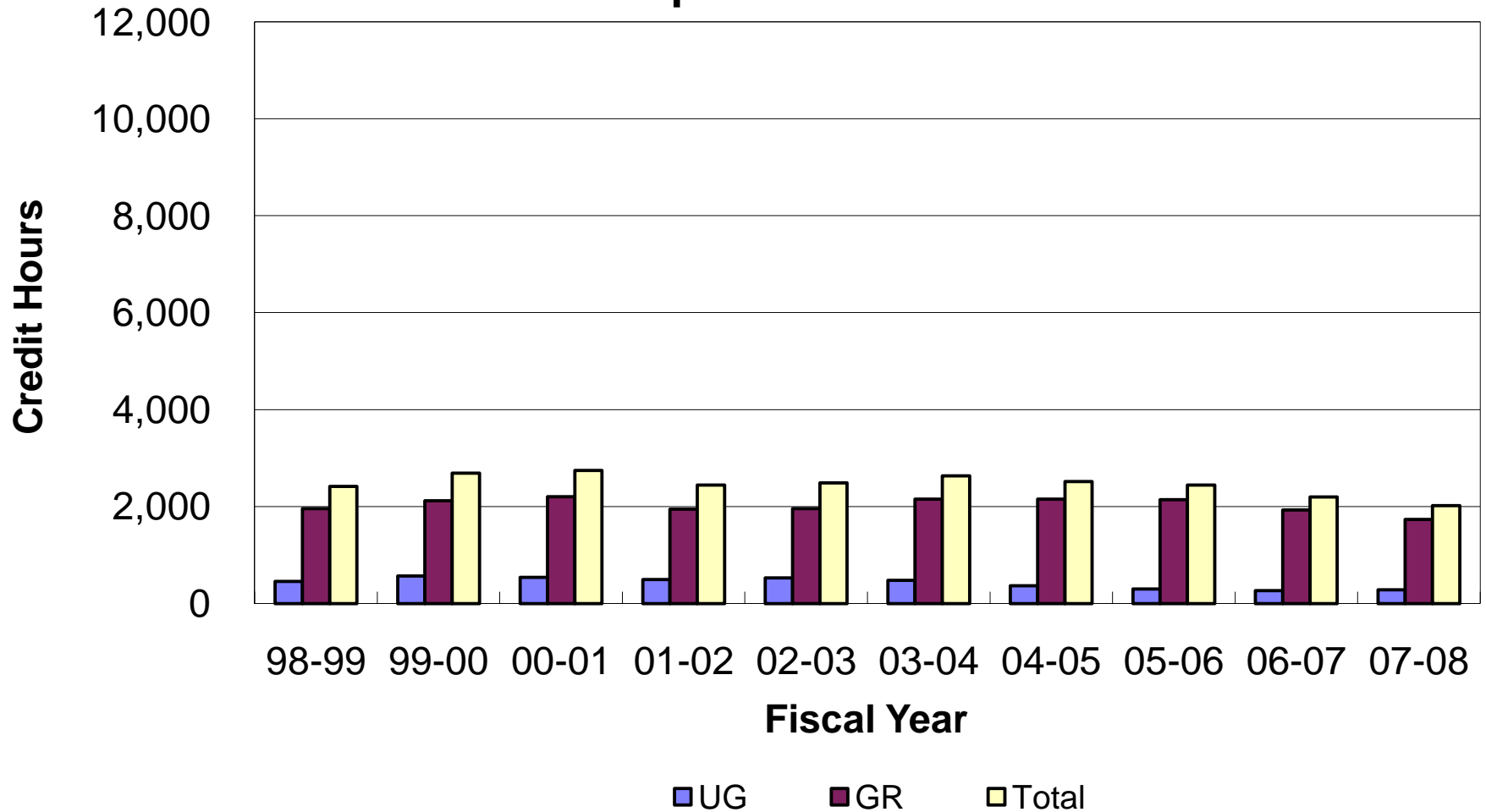
**Colorado State University
College of Engineering
History of Generated Credit Hours**

	98-99	99-00	00-01	01-02	02-03	03-04	04-05	05-06	06-07	07-08
Electrical and Computer Engineering										
Lower	1,941.0	2,414.0	2,372.0	2,445.0	2,515.0	2,377.0	2,088.0	1,726.0	1,521.0	1,493.0
UPper	2,542.0	2,464.0	2,623.6	3,146.0	3,311.0	3,416.0	3,023.0	2,267.0	2,022.0	2,166.0
UG	4,483.0	4,878.0	4,995.6	5,591.0	5,826.0	5,793.0	5,111.0	3,993.0	3,543.0	3,659.0
Grad I	678.0	1,277.0	1,250.0	1,627.0	1,522.0	1,461.0	1,341.0	1,083.0	965.0	853.5
Grad II	185.0	186.0	219.0	381.0	393.0	356.0	321.0	369.0	479.0	356.2
GR	863.0	1,463.0	1,469.0	2,008.0	1,915.0	1,817.0	1,662.0	1,452.0	1,444.0	1,209.7
Total	5,346.0	6,341.0	6,464.6	7,599.0	7,741.0	7,610.0	6,773.0	5,445.0	4,987.0	4,868.7
Mechanical Engineering										
Lower	1,601.0	1,737.0	1,771.0	1,869.0	1,837.0	1,943.0	1,546.0	1,902.0	2,102.0	1,873.0
Upper	3,708.0	4,071.0	3,993.9	4,374.0	4,560.0	4,789.0	4,669.2	5,007.0	5,272.0	5,148.0
UG	5,309.0	5,808.0	5,764.9	6,243.0	6,397.0	6,732.0	6,215.2	6,909.0	7,374.0	7,021.0
Grad I	683.0	473.0	680.0	826.0	1,173.0	1,104.0	1,285.0	1,312.1	1,224.0	1,072.0
Grad II	210.0	135.0	135.0	97.0	39.0	115.0	161.0	89.0	201.0	252.0
GR	893.0	608.0	815.0	923.0	1,212.0	1,219.0	1,446.0	1,401.1	1,425.0	1,324.0
Total	6,202.0	6,416.0	6,579.9	7,166.0	7,609.0	7,951.0	7,661.2	8,310.1	8,799.0	8,345.0
Total College										
Lower	7,230.0	7,670.0	7,737.0	7,997.0	8,182.0	7,662.0	6,923.0	6,369.0	6,527.0	6,827.0
Upper	13,455.4	13,155.2	13,540.9	14,790.6	14,924.1	15,366.0	14,865.1	14,599.0	14,363.0	13,489.6
UG	20,685.4	20,825.2	21,277.9	22,787.6	23,106.1	23,028.0	21,788.1	20,968.0	20,890.0	20,316.6
Grad I	4,491.2	5,066.0	5,126.8	5,507.2	5,981.8	5,880.8	5,976.0	5,301.6	5,165.0	4,674.5
Grad II	1,775.0	1,734.5	1,652.0	1,582.0	1,981.0	2,021.0	2,196.8	2,157.6	2,035.3	2,053.6
GR	6,266.2	6,800.5	6,778.8	7,089.2	7,962.8	7,901.8	8,172.8	7,459.2	7,200.3	6,728.1
Total	26,951.6	27,625.7	28,056.7	29,876.8	31,068.9	30,929.8	29,960.9	28,427.2	28,090.3	27,044.7

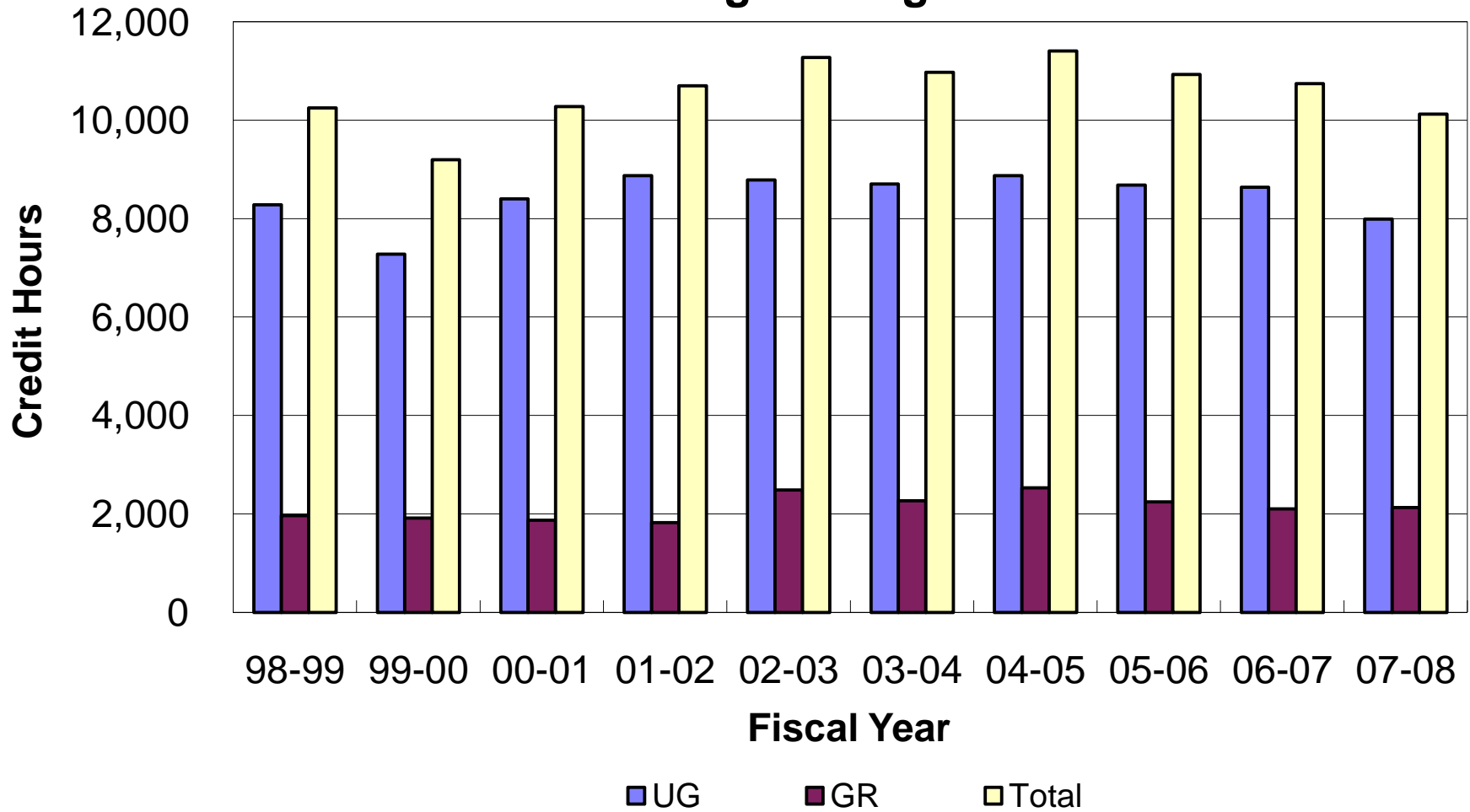
Colorado State University College of Engineering Student Credit Hours by Course Level Chemical Engineering



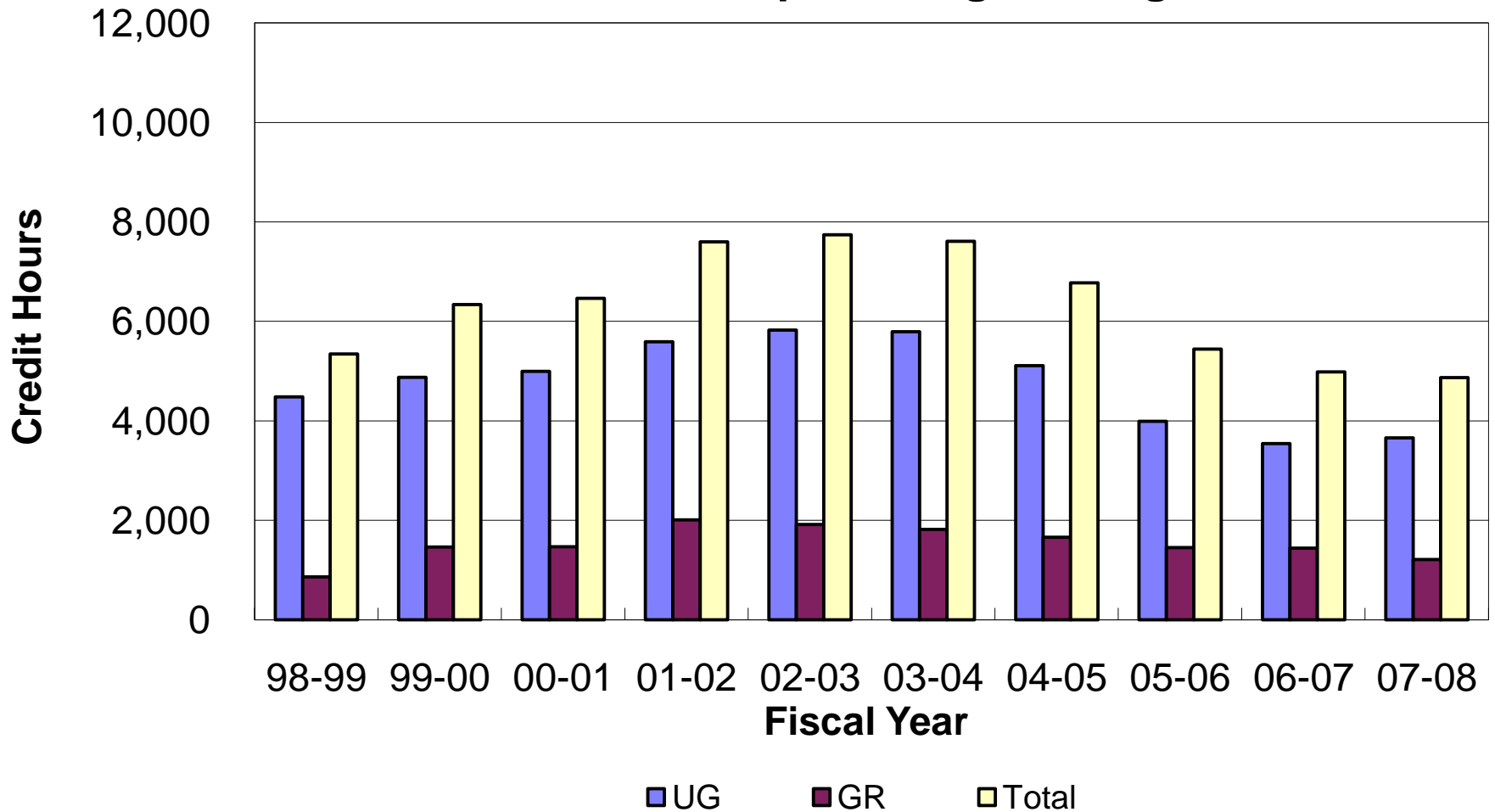
**Colorado State University
College of Engineering
Student Credit Hours by Course Level
Atmospheric Science**



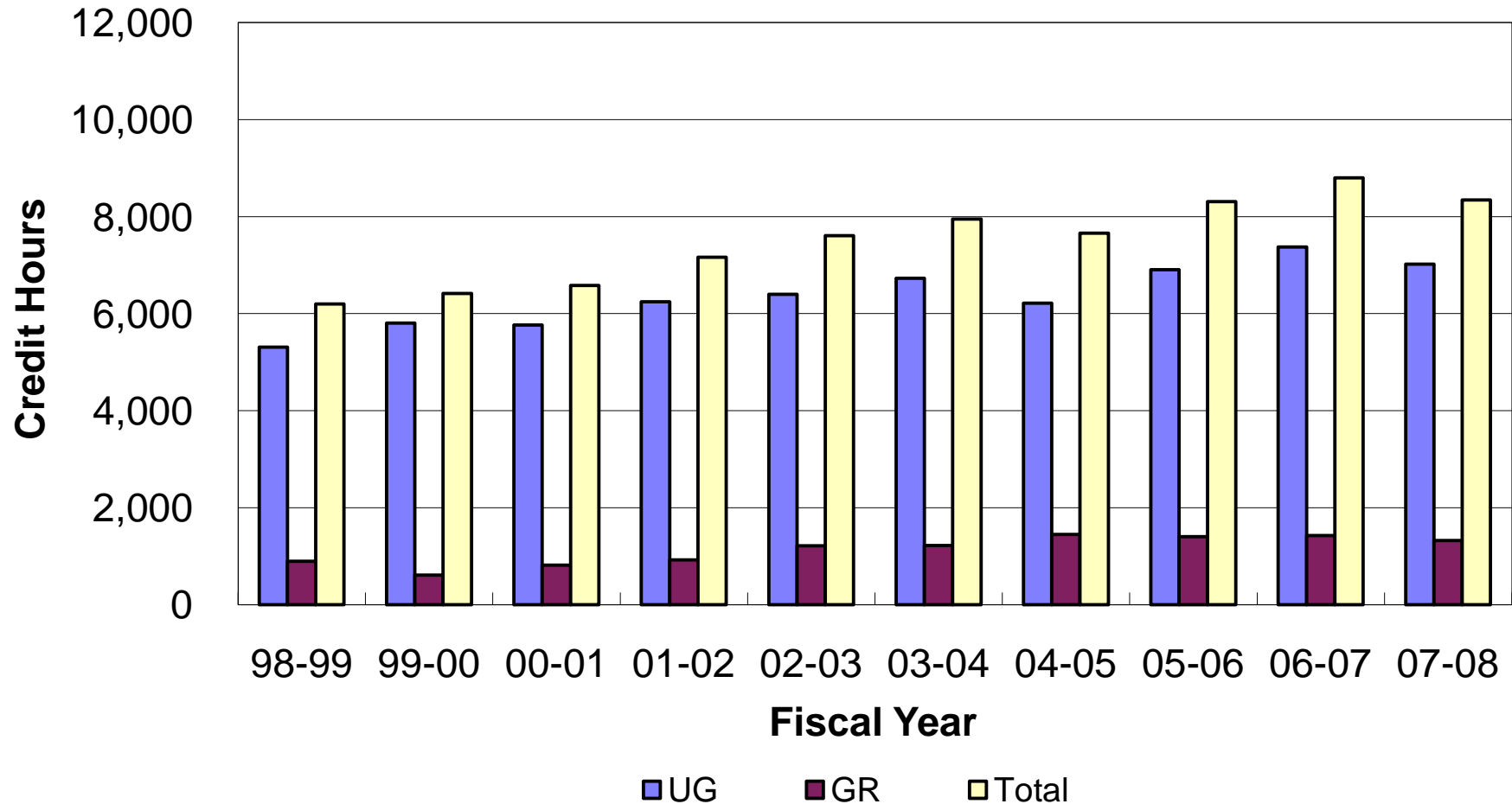
**Colorado State University
College of Engineering
Student Credit Hours by Course Level
Civil Engineering**



Colorado State University College of Engineering Student Credit Hours by Course Level Electrical and Computer Engineering



**Colorado State University
College of Engineering
Student Credit Hours by Course Level
Mechanical Engineering**



**Colorado State University
College of Engineering
Student Credit Hours by Course Level
Total College**

