

**Colorado State University
College of Engineering
History of Generated Credit Hours**

	97-98	98-99	99-00	00-01	01-02	02-03	03-04	04-05	05-06	06-07
Dean of Engineering										
Lower	19.0	49.0	10.0	4.0	4.0	132.0	5.0	0.0	0.0	0.0
Upper	0.0	0.0	0.0	60.0	18.0	0.0	0.0	0.0	4.0	0.0
UG	19.0	49.0	10.0	64.0	22.0	132.0	5.0	0.0	4.0	0.0
Grad I	0.0	0.0	0.0	0.0	0.0	0.0	2.0	23.0	0.0	0.0
Grad II	0.0	0.0	0.0	0.0	0.0	0.0	0.0	7.0	0.0	0.0
GR	0.0	0.0	0.0	0.0	0.0	0.0	2.0	30.0	0.0	0.0
Total	19.0	49.0	10.0	64.0	22.0	132.0	7.0	30.0	4.0	0.0
Chemical Engineering										
Lower	555.0	694.0	810.0	321.0	475.5	483.0	405.0	375.0	366.0	468.0
Upper	1,320.1	1,416.4	1,477.2	1,191.3	1,090.6	957.1	908.0	848.0	712.0	601.0
UG	1,875.1	2,110.4	2,287.2	1,512.3	1,566.1	1,440.1	1,313.0	1,223.0	1,078.0	1,069.0
Grad I	713.5	405.7	521.0	280.0	279.2	169.0	170.0	112.0	59.0	209.0
Grad II	204.0	177.0	166.0	133.0	106.2	220.0	270.0	237.0	155.0	85.0
GR	917.5	582.7	687.0	413.0	385.4	389.0	440.0	349.0	214.0	294.0
Total	2,792.6	2,693.1	2,974.2	1,925.3	1,951.5	1,829.1	1,753.0	1,572.0	1,292.0	1,363.0

**Colorado State University
College of Engineering
History of Generated Credit Hours**

	97-98	98-99	99-00	00-01	01-02	02-03	03-04	04-05	05-06	06-07
Atmospheric Science										
Lower	0.0	0.0	0.0	96.0	0.0	0.0	0.0	19.0	26.0	0.0
Upper	457.0	457.0	568.0	443.0	496.0	528.0	482.0	349.0	278.0	266.0
UG	457.0	457.0	568.0	539.0	496.0	528.0	482.0	368.0	304.0	266.0
Grad I	1,159.0	1,065.5	1,217.0	1,352.0	1,125.0	1,036.8	1,127.0	1,120.0	1,036.5	986.0
Grad II	951.0	895.0	905.5	856.0	823.8	923.0	1,029.0	1,032.8	1,107.6	948.3
GR	2,110.0	1,960.5	2,122.5	2,208.0	1,948.8	1,959.8	2,156.0	2,152.8	2,144.1	1,934.3
Total	2,567.0	2,417.5	2,690.5	2,747.0	2,444.8	2,487.8	2,638.0	2,520.8	2,448.1	2,200.3
Civil Engineering										
Lower	2,632.0	2,945.0	2,699.0	3,173.0	3,203.5	3,215.0	2,932.0	2,895.0	2,349.0	2,436.0
Upper	5,123.0	5,332.0	4,575.0	5,229.1	5,666.0	5,568.0	5,771.0	5,975.9	6,331.0	6,202.0
UG	7,755.0	8,277.0	7,274.0	8,402.1	8,869.5	8,783.0	8,703.0	8,870.9	8,680.0	8,638.0
Grad I	1,845.0	1,659.0	1,578.0	1,564.8	1,650.0	2,081.0	2,016.8	2,095.0	1,811.0	1,781.0
Grad II	418.0	308.0	342.0	309.0	174.0	406.0	251.0	438.0	437.0	322.0
GR	2,263.0	1,967.0	1,920.0	1,873.8	1,824.0	2,487.0	2,267.8	2,533.0	2,248.0	2,103.0
Total	10,018.0	10,244.0	9,194.0	10,275.9	10,693.5	11,270.0	10,970.8	11,403.9	10,928.0	10,741.0

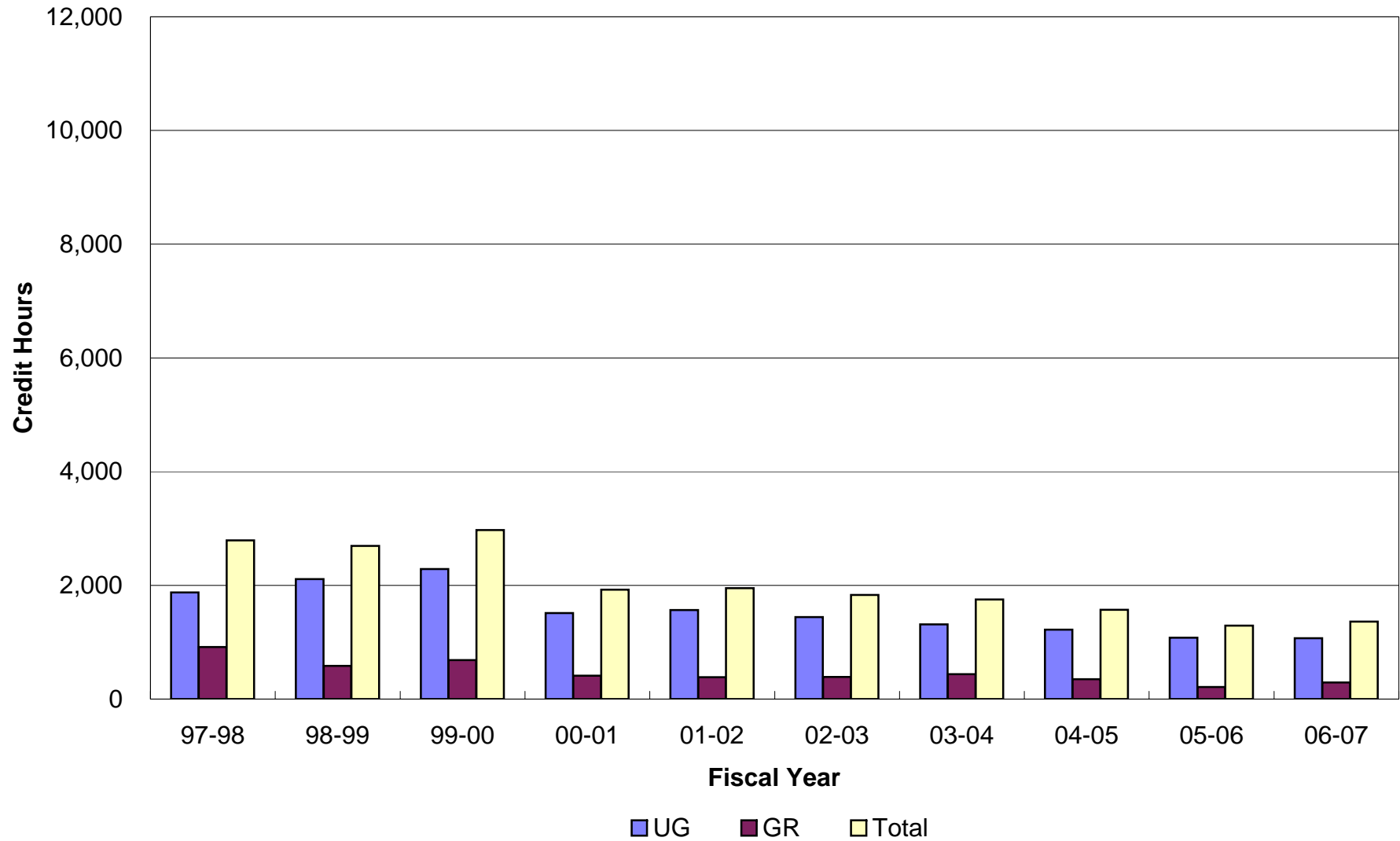
**Colorado State University
College of Engineering
History of Generated Credit Hours**

	97-98	98-99	99-00	00-01	01-02	02-03	03-04	04-05	05-06	06-07
Electrical and Computer Engineering										
Lower	1,879.0	1,941.0	2,414.0	2,372.0	2,445.0	2,515.0	2,377.0	2,088.0	1,726.0	1,521.0
UPper	2,502.0	2,542.0	2,464.0	2,623.6	3,146.0	3,311.0	3,416.0	3,023.0	2,267.0	2,022.0
UG	4,381.0	4,483.0	4,878.0	4,995.6	5,591.0	5,826.0	5,793.0	5,111.0	3,993.0	3,543.0
Grad I	802.0	678.0	1,277.0	1,250.0	1,627.0	1,522.0	1,461.0	1,341.0	1,083.0	965.0
Grad II	205.0	185.0	186.0	219.0	381.0	393.0	356.0	321.0	369.0	479.0
GR	1,007.0	863.0	1,463.0	1,469.0	2,008.0	1,915.0	1,817.0	1,662.0	1,452.0	1,444.0
Total	5,388.0	5,346.0	6,341.0	6,464.6	7,599.0	7,741.0	7,610.0	6,773.0	5,445.0	4,987.0
Mechanical Engineering										
Lower	1,787.0	1,601.0	1,737.0	1,771.0	1,869.0	1,837.0	1,943.0	1,546.0	1,902.0	2,102.0
Upper	3,280.7	3,708.0	4,071.0	3,993.9	4,374.0	4,560.0	4,789.0	4,669.2	5,007.0	5,272.0
UG	5,067.7	5,309.0	5,808.0	5,764.9	6,243.0	6,397.0	6,732.0	6,215.2	6,909.0	7,374.0
Grad I	572.0	683.0	473.0	680.0	826.0	1,173.0	1,104.0	1,285.0	1,312.1	1,224.0
Grad II	203.0	210.0	135.0	135.0	97.0	39.0	115.0	161.0	89.0	201.0
GR	775.0	893.0	608.0	815.0	923.0	1,212.0	1,219.0	1,446.0	1,401.1	1,425.0
Total	5,842.7	6,202.0	6,416.0	6,579.9	7,166.0	7,609.0	7,951.0	7,661.2	8,310.1	8,799.0

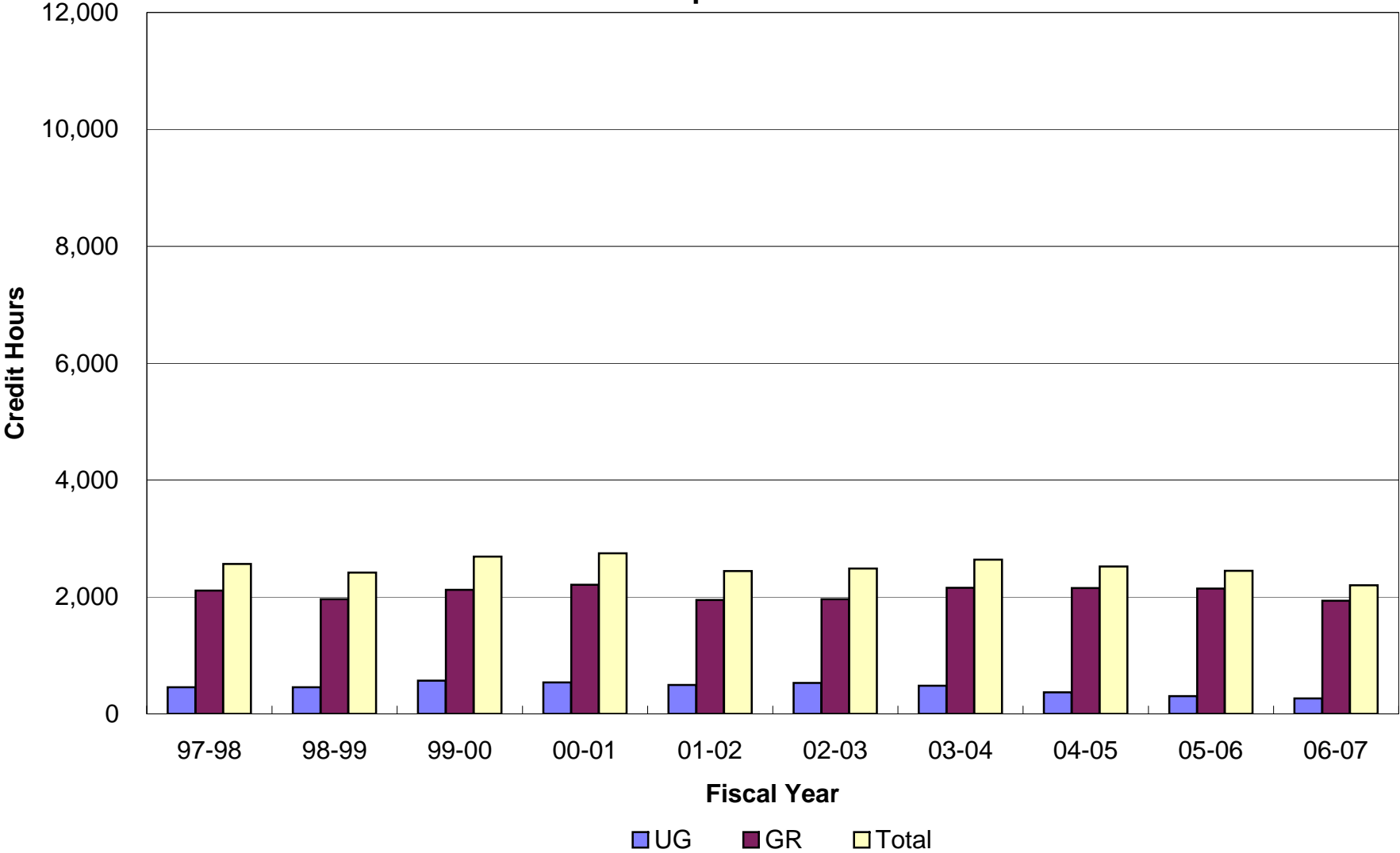
**Colorado State University
College of Engineering
History of Generated Credit Hours**

	97-98	98-99	99-00	00-01	01-02	02-03	03-04	04-05	05-06	06-07
Total College										
Lower	6,872.0	7,230.0	7,670.0	7,737.0	7,997.0	8,182.0	7,662.0	6,923.0	6,369.0	6,527.0
Upper	12,682.8	13,455.4	13,155.2	13,540.9	14,790.6	14,924.1	15,366.0	14,865.1	14,599.0	14,363.0
UG	19,554.8	20,685.4	20,825.2	21,277.9	22,787.6	23,106.1	23,028.0	21,788.1	20,968.0	20,890.0
Grad I	5,091.5	4,491.2	5,066.0	5,126.8	5,507.2	5,981.8	5,880.8	5,976.0	5,301.6	5,165.0
Grad II	1,981.0	1,775.0	1,734.5	1,652.0	1,582.0	1,981.0	2,021.0	2,196.8	2,157.6	2,035.3
GR	7,072.5	6,266.2	6,800.5	6,778.8	7,089.2	7,962.8	7,901.8	8,172.8	7,459.2	7,200.3
Total	26,627.3	26,951.6	27,625.7	28,056.7	29,876.8	31,068.9	30,929.8	29,960.9	28,427.2	28,090.3

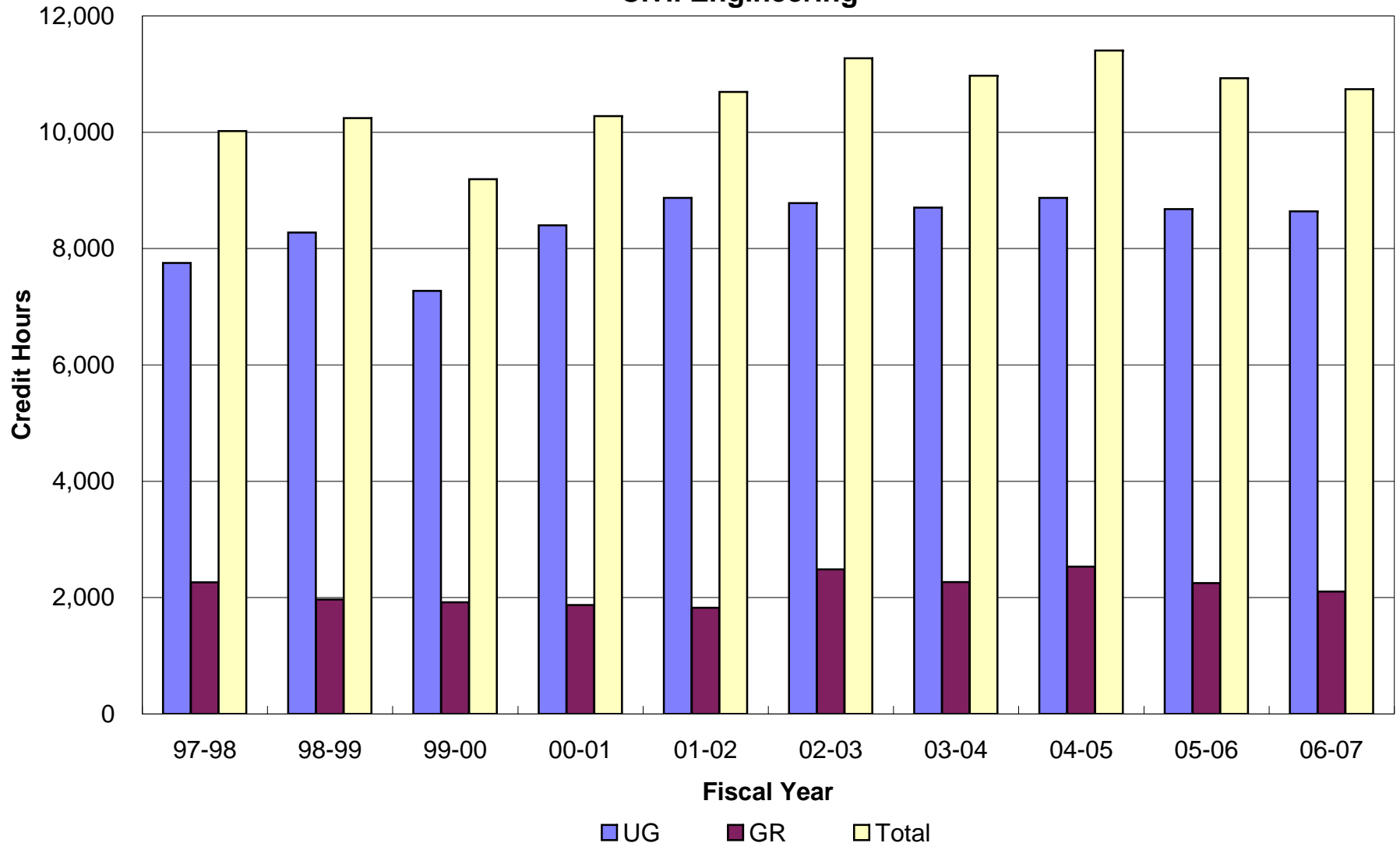
**Colorado State University
College of Engineering
Student Credit Hours by Course Level
Chemical Engineering**



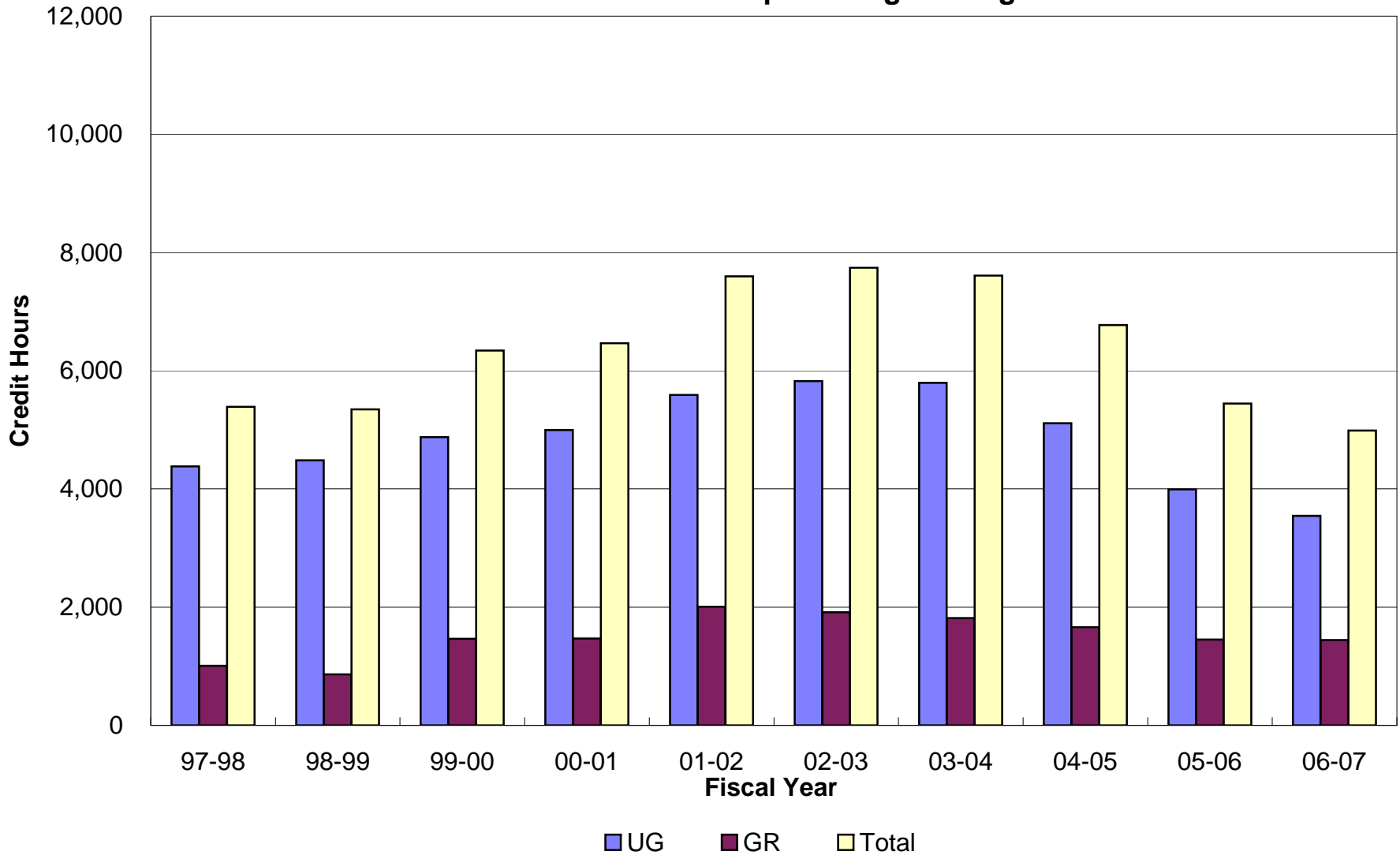
**Colorado State University
College of Engineering
Student Credit Hours by Course Level
Atmospheric Science**



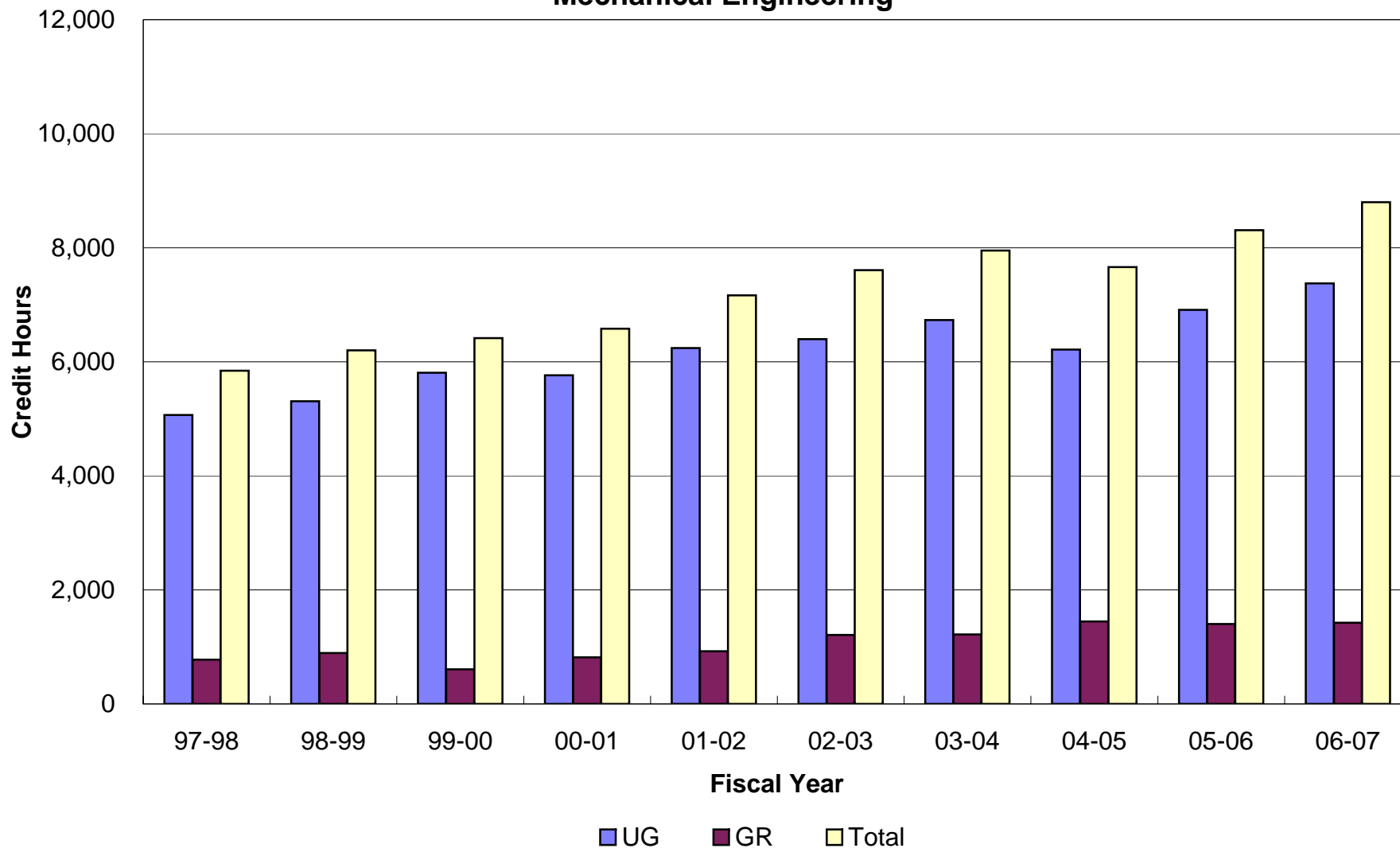
**Colorado State University
College of Engineering
Student Credit Hours by Course Level
Civil Engineering**



**Colorado State University
College of Engineering
Student Credit Hours by Course Level
Electrical and Computer Engineering**



**Colorado State University
College of Engineering
Student Credit Hours by Course Level
Mechanical Engineering**



**Colorado State University
College of Engineering
Student Credit Hours by Course Level
Total College**

