

available at www.sciencedirect.comwww.elsevier.com/locate/scitotenv

TREX: Spatially distributed model to assess watershed contaminant transport and fate

Mark L. Velleux^{a,*}, John F. England Jr.^b, Pierre Y. Julien^c

^aDepartment of Civil and Environmental Engineering, Colorado State Univ., Fort Collins, Colorado, 80523, United States

^bBureau of Reclamation, Flood Hydrology Group, Denver, CO, 80225, United States

^cDepartment of Civil and Environmental Engineering, Colorado State Univ., Fort Collins, Colorado, 80523, United States

ARTICLE INFO

Article history:

Received 5 March 2008

Received in revised form 29 May 2008

Accepted 30 May 2008

Available online 22 July 2008

Keywords:

Hydrology

Watershed

Model

Runoff

Sediment transport

Contaminants

Metals

Mine waste

ABSTRACT

Contaminant releases from upland areas can have adverse water quality and stream ecology impacts. TREX (Two-dimensional, Runoff, Erosion, and Export) is a spatially distributed, physically-based model to simulate chemical transport and fate at the watershed scale. TREX combines surface hydrology and sediment transport features from the CASC2D watershed model with chemical transport features from the WASP/IPX series of water quality models. In addition to surface runoff and sediment transport, TREX simulates: (1) chemical erosion, advection, and deposition; (2) chemical partitioning and phase distribution; and (3) chemical infiltration and redistribution. Floodplain interactions for water, sediment, and chemicals are also simulated. To demonstrate the potential for using TREX to simulate chemical transport at the watershed scale, a screening-level application was developed for the California Gulch watershed mine-waste site in Colorado. Runoff, sediment transport, and metals (Cu, Cd, Zn) transport were simulated for a calibration event and a validation event. The model reproduced measured peak flows, and times to peak at the watershed outlet and three internal locations. Simulated flow volumes were within approximately 10% of measured conditions. Model results were also generally within measured ranges of total suspended solid and metal concentrations. TREX is an appropriate tool for investigating multimedia environmental problems that involve water, soils, and chemical interactions in a spatially distributed manner within a watershed.

© 2008 Elsevier B.V. All rights reserved.

1. Introduction

Unmanaged contaminant releases from upland sources, their transport across the land surface, and delivery to stream networks can have adverse water quality and ecological impacts. High resolution tools are needed to assess chemical transport and fate at the watershed scale to formulate effective management plans that address chemical impacts. The need for high resolution is driven by the fact that contaminant occurrence and transport conditions are often

highly heterogeneous and can differ significantly across small spatial and temporal scales.

The transport of metals from mine wastes is representative of a large class of water quality problems that can be readily assessed using high resolution watershed models. Environmental impairments attributable to contaminants from inactive and abandoned mines are widespread. Across the western U.S., contaminants associated with acid mine drainage are estimated to affect more than 500,000 ac of land and several thousand miles of streams and other surface waters (IMCC,

* Corresponding author. Tel.: +1 201 529 5151; fax: +1 210 529 5728.

E-mail address: mvelleux@hydroqual.com (M.L. Velleux).

¹ Present address: HydroQual, Inc., Mahwah, New Jersey, 07430, United States.

1992; USEPA, 1996). The scale of this problem is so extensive that not all areas of contaminated sites can be rehabilitated. Consequently, priorities must be established to maximize remediation that can be achieved with limited resources. Spatially distributed watershed models can be used to evaluate site conditions, assess how contaminated areas contribute to overall site impairments, and develop remediation strategies that prioritize areas for cleanup. Such tools are particularly useful in the context of sites managed by the U.S. Environmental Protection Agency (USEPA) Superfund program. In addition to addressing metal impacts, models that integrate water, soils, and chemicals can be used to investigate other multimedia environmental problems, including: flash-floods (England et al., 2007); upland erosion (Julien and Rojas, 2002); Total Maximum Daily Loads (TMDLs); and fire-related flood, sediment, and water quality studies.

2. Research objectives

The objectives of this research were to: (1) develop and describe the algorithms of a spatially distributed model to simulate chemical transport and fate at the watershed scale; and (2) demonstrate model potential by a screening-level application to the California Gulch mine waste-contaminated watershed. To meet these objectives, the Two-dimensional, Runoff, Erosion, and Export (TRES) watershed model was developed. TRES is a fully distributed, physically-based numerical model to simulate chemical transport and fate at the watershed scale. In addition to hydrology and sediment transport, TRES simulates chemical partitioning and phase distribution, advection, erosion, deposition, and dissolved phase infiltration in surface water, soil, and sediment. Floodplain interactions are also simulated and include the bi-directional exchange of water, sediment, and chemicals both to and from floodplain areas of the overland plane and stream channels.

3. Model development

Key milestones in the development of fully distributed, physically-based watershed models include CASC2D (Julien and Saghaian, 1991; Julien et al., 1995; Johnson et al., 2000; Ogden and Julien, 2002; Julien and Rojas, 2002), GSSHA (Downer and Ogden, 2004), and the SHE series of models (Abbott et al., 1986; Wicks and Bathurst, 1996; Ewen et al., 2000). The starting point for TRES development was CASC2D. The basic CASC2D framework is an event-based model that simulates overland flow, surface soil erosion and deposition, channel flow and sediment transport through stream channels. As part of TRES development, the hydrologic and sediment transport components of CASC2D were expanded to support the addition of chemical transport features. Chemical transport and fate components were formulated based on those in the WASP/IPX series of stream water quality models (Ambrose et al., 1993; Velleux et al., 2001) to create a fully distributed model to simulate chemical transport and fate at the watershed scale. A review of key hydrologic, sediment transport, and chemical transport processes is informative to illustrate the physics behind the model. A conceptual diagram of model processes is

presented in Fig. 1. More detailed descriptions of all processes in TRES are presented by Velleux (2005) and Velleux et al. (2006a).

3.1. Hydrologic submodel

The hydrologic processes in the model are: (1) rainfall, interception, and surface storage; (2) infiltration and transmission loss; and (3) overland and channel flow. The model state variables are water depth in the overland plane and stream channels. Rainfall can be uniform or distributed in both time and space and can also be specified using several grid-based formats to facilitate radar rainfall data use. When spatially distributed rainfall is simulated, areal rainfall estimates are interpolated from point rain gage data using an inverse distance weighting approach. Interception and surface storage are simulated as equivalent depths.

Infiltration and transmission loss rates are simulated using the Green and Ampt (1911) relationship (Li et al., 1976; Abdullrazzak and Morel-Seytoux, 1983; Freyberg, 1983; Julien, 2002):

$$f = K_h \left(1 + \frac{(H_w + H_c)(1 - S_e)\theta_e}{F} \right) \quad (1)$$

where: f =infiltration or transmission loss rate [L/T]; K_h =effective hydraulic conductivity [L/T]; H_w =hydrostatic pressure head (ponded water depth) [L]; H_c =capillary pressure (suction) head at the wetting front [L]; θ_e =effective soil or sediment porosity= $(\phi - \theta_r)$ [dimensionless]; ϕ =total soil or sediment porosity [dimensionless]; θ_r =residual moisture content [dimensionless]; S_e =effective saturation [dimensionless]; and F =cumulative water depth (depth to wetting front) [L]. For infiltration on the overland plane, the hydrostatic pressure head of ponded water (H_w) is neglected.

Overland flow is two-dimensional and simulated using the diffusive wave approximation. Flow occurs when the water depth exceeds the storage depth and the friction slope is not zero (Julien et al., 1995; Julien, 2002):

$$\frac{\partial h}{\partial t} + \frac{\partial q_x}{\partial x} + \frac{\partial q_y}{\partial y} = i_n - f + W = i_e \quad (2)$$

$$q_x = \alpha_x h^\beta \quad (3a)$$

$$q_y = \alpha_y h^\beta \quad (3b)$$

where: h =surface water depth [L]; q_x, q_y =unit discharge in the x- or y-direction= $Q_x/B_x, Q_y/B_y$ [L²/T]; Q_x, Q_y =flow in the x- or y-direction [L³/T]; B_x, B_y =flow width in the x- or y-direction [L]; i_n =net precipitation rate (gross rainfall minus interception) [L/T]; W =flow point source (unit discharge) [L²/T]; i_e =excess precipitation rate [L/T]; α_x, α_y =resistance coefficient for flow in the x- or y-direction= $|S_{fx}|^{1/2}/n_M, |S_{fy}|^{1/2}/n_M$ [L^{1/3}/T]; n_M =Manning roughness coefficient [T/L^{1/3}]; S_{fx}, S_{fy} =friction slope (energy grade line) in the x- or y-direction= $S_{0x} - dh/dx, S_{0y} - dh/dy$ [dimensionless]; S_{0x}, S_{0y} =ground surface slope in the x- or y-direction [dimensionless]. To solve the resistance coefficient equations for α_x and α_y , the absolute value of S_f is used and the sign of S_f indicates the flow direction.

Channel flow is one-dimensional and simulated using the diffusive wave approximation. Flow occurs when the water

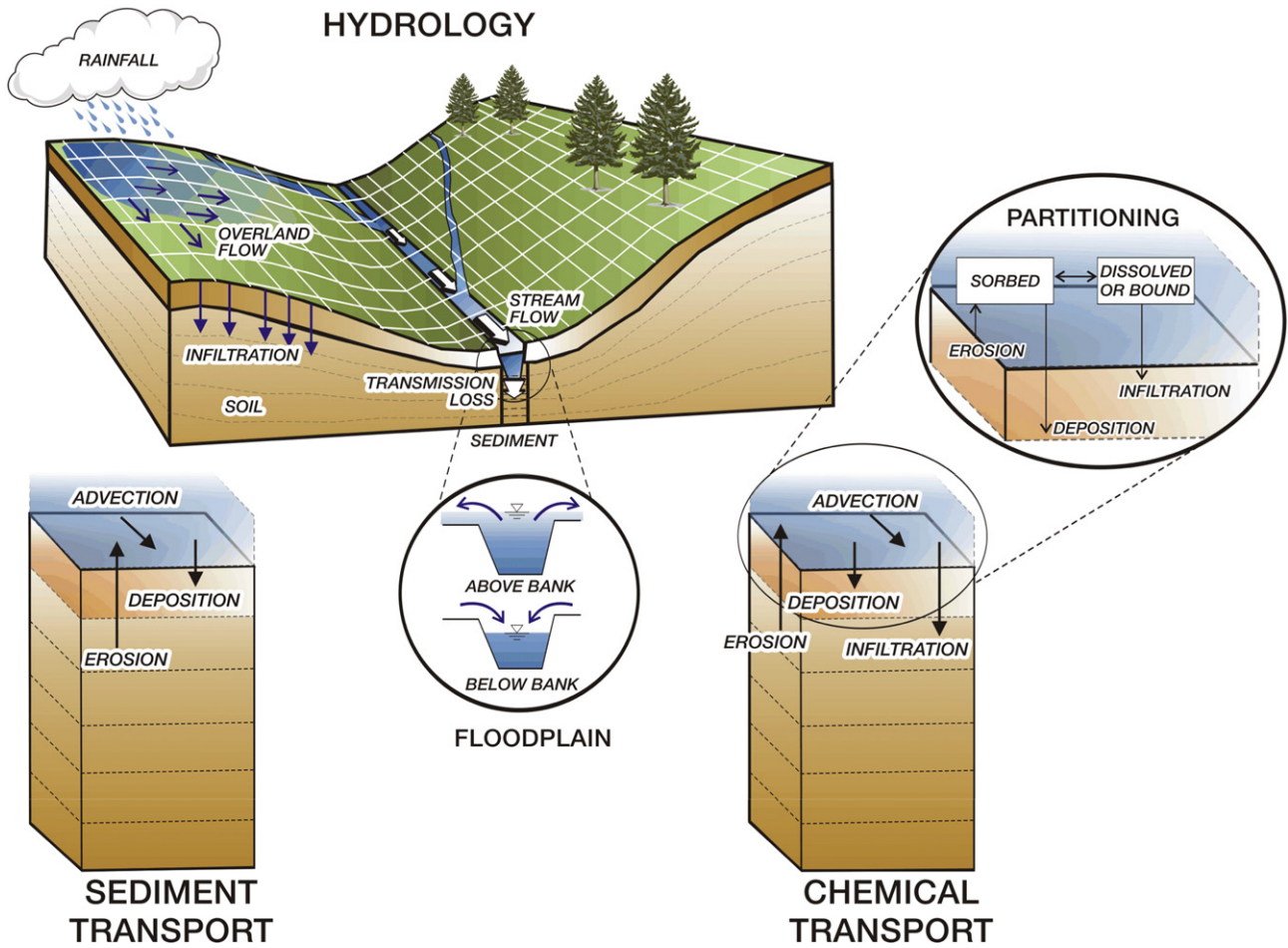


Fig. 1 – Model framework for hydrology, sediment, and chemical transport processes.

depth exceeds the storage depth and the friction slope is not zero (Julien et al., 1995; Julien, 2002):

$$\frac{\partial A_c}{\partial t} + \frac{\partial Q_x}{\partial x} = q_l + W \quad (4)$$

$$Q_x = \frac{1}{n_M} A_c R_h^{2/3} |S_{fx}|^{1/2} \quad (5)$$

where: A_c =cross-sectional area of flow [L^2]; Q =total discharge [L^3/T]; q_l =lateral unit flow (into or out of the channel) [L^2/T]; W =unit discharge from/to a point source/sink (including direct rainfall to the channel) [L^2/T]; R_h =hydraulic radius of flow= A_c/P_c [L]; P_c =wetted perimeter of channel [L]. To solve Eq. (5), the absolute value of S_f is used and the sign indicates the flow direction.

In floodplain areas, water and any transported constituents are transferred between the overland plane and channel network based on the difference in water surface elevations. Floodplain transfers are bi-directional. Water and transported constituents move into stream channels by overland flow and can return to the overland plane when water levels in the stream exceed bank height. Similarly, materials can be moved from the sediment bed and can be delivered to the land surface by floodwaters.

3.2. Sediment transport submodel

The sediment transport processes in the model are: (1) advection and dispersion; (2) erosion and deposition; and (3) bed elevation adjustment. All processes occur in both the overland plane and stream channel. The model state variables are solid concentrations in overland runoff, soil, stream flow, and sediments. Any number of particle size classes can be simulated. Advection is computed from flow and concentration. Erosion and deposition rates are calculated as a function of the hydraulic properties of the flow, the physical properties of the soils and sediments such as particle grain size, and surface characteristics such as slope.

For the overland plane in two-dimensions, the concentration of particles in a flow is expressed by sediment continuity (Julien, 1998):

$$\frac{\partial C_s}{\partial t} + \frac{\partial q_{stx}}{\partial x} + \frac{\partial q_{sty}}{\partial y} = \frac{1}{h} (J_{es} - J_{ds}) + \hat{W}_s \quad (6)$$

$$q_{stx} = u_x C_s - R_x \frac{\partial C_s}{\partial x} \quad (7a)$$

$$q_{sty} = u_y C_s - R_y \frac{\partial C_s}{\partial y} \quad (7b)$$

where: C_s =concentration of particles in the water column [M/L^3]; q_{stx} , q_{sty} =total sediment transport flux in the x- or y-direction [M/L^2T]; J_{es} =sediment erosion flux [M/L^2T]; J_{ds} =sediment deposition flux [M/L^2T]; \hat{W}_s =volumetric sediment point source/sink flux [M/L^3T]; v_x , v_y =flow (advective) velocity in the x- or y-direction [L/T]; and R_x , R_y =dispersion (mixing) coefficient in the x- or y-direction [L^2/T].

Similarly, for the channel network in one-dimension (laterally and vertically averaged), the concentration of particles in a flow is also expressed by sediment continuity (Julien, 1998):

$$\frac{\partial C_s}{\partial t} + \frac{\partial q_{stx}}{\partial x} = \frac{1}{h}(J_{es} - J_{ds}) + \hat{W}_s. \quad (8)$$

Definitions of terms for the channel advection–diffusion equation are identical to those defined for the overland plane. Dispersion in channels is expected to be larger than for overland flow. However, channel dispersion may still be negligible relative to channel advection during intense flows.

Erosion is expressed as a mass rate of particle removal from the bottom boundary over time, based on transport capacity:

$$J_{es} = v_r C_{sb} \quad (9)$$

$$v_r = \begin{cases} \frac{J_c - v_a C_s}{\rho_b} & \text{for } J_c > v_a C_s \\ 0 & \text{for } J_c \leq v_a C_s \end{cases} \quad (10)$$

where: v_r =resuspension (erosion) velocity [L/T]; C_{sb} =concentration of particles in the soil or sediment bed [M/L^3]; J_c =sediment transport capacity flux [M/L^2T]; v_a =advective (flow) velocity (in the x- or y-direction) [L/T]; and ρ_b =bulk density of bed sediments [M/L^3].

A modified form of the Kilinc and Richardson (1973) relationship is used to compute sediment transport capacity for the overland plane (Johnson et al., 2000; Julien and Rojas, 2002) using Universal Soil Loss Equation (USLE) (Wischmeier and Smith, 1978) parameters and an explicit erosion threshold:

$$q_s = 1.542 \times 10^8 (q - q_c)^{2.035} S_f^{1.66} KCP \quad (11)$$

$$J_c = \frac{q_s}{B_e} \quad (12)$$

where: q_s =total sediment transport capacity ($kg/m \ s$) [M/LT]; q =unit flow of water [L^2/T]= $v_a h$; q_c =critical unit flow for erosion (of the aggregate soil matrix) [L^2/T]; S_f =friction slope [dimensionless]; K =USLE soil erodibility factor; C =USLE soil cover factor; P =USLE soil management practice factor; and B_e =width of eroding surface in flow direction [L]. The erosion rate estimated for the aggregate soil and is apportioned for particle type simulated according to the fractional abundance of each particle in the soil matrix (grain size distribution) and the particle dimensionless diameter (d).

The Englund and Hansen (1967) relationship, modified to include an explicit erosion threshold, is used to estimate the total load sediment transport capacity for channels:

$$C_w = 0.05 \left(\frac{G}{G-1} \right) \frac{(v_a - v_c) S_f}{[(G-1)gd_p]^{0.5}} \left[\frac{R_h S_f}{(G-1)d_p} \right]^{0.5} \quad (13)$$

$$J_c = \frac{v_a C_t}{A_c} \quad (14)$$

where: C_w =concentration of particles by weight at transport capacity [dimensionless]; G =particle specific gravity [dimensionless]; v_a =advective (flow) velocity (in the down-gradient direction) [L/T]; v_c =critical velocity for erosion [L/T]; S_f =friction slope [dimensionless]; g =gravitation acceleration [L/T^2]; d_p =particle diameter [L]; and C_t =concentration of particles in the water column at transport capacity [M/L^3]= $10^6 G C_w [G + (1-G)C_w]$ (for C_t in g/m^3).

Deposition is influenced by many factors including particle density, diameter, and shape, as well as fluid turbulence and is

Table 1 – Comparative overview of TREX features

Feature	CASC2D	TREX
<i>General model controls</i>		
Time step (Δt)	One time step	Variable time step based on flow
<i>Hydrologic submodel</i>		
Initial water depth	Dry start assumed Rojas (2002)	User specified wet or dry start
Outlets and downstream boundary conditions	One outlet, assumed normal depth	Any number of outlets and downstream normal depth
Floodplain interaction	Nascent features Julien et al. (1995) not in recent code Rojas (2002).	Enhanced to compute flooding from water surface elevations
Channel topology: orientation	Channel connections limited to four (N-S or E-W) directions	Channel connections in all eight raster grid directions
Channel topology: branching	Converging branches only, limited to two branches upstream	Converging and diverging branches with 2–7 connecting branches
Point sources/sinks	None	Overland plane and channels
<i>Sediment transport submodel</i>		
Number of particle types	Limited to three	Unlimited
Floodplain sediment transport	None	When floodplain submerged
Channel erosion	Channel aggradation only	Aggradation or degradation
Point sources/sinks	None	Overland plane and channels
<i>Chemical transport and fate submodel</i>		
Number of chemical types	None	Unlimited
Chemical transport and fate	None	Three-phase partitioning
Point sources/sinks	None	Overland plane and channels

expressed as the mass rate of particle removal from the water column by gravity over time:

$$J_{ds} = v_{se}C_s = P_{dep}v_sC_s \quad (15)$$

where: v_{se} =effective settling (deposition) velocity [L/T]; v_s =quiescent settling velocity [L/T]; and P_{dep} =probability of deposition [dimensionless]. P_{dep} is computed as described by Gessler (1967) (non-cohesive particles) and Krone (1962) or Partheniades (1992) (cohesive particles).

The rise or fall of the bed surface is expressed by sediment continuity (Exner, 1925). Neglecting bed consolidation and compaction processes, and assuming that only vertical transport processes (erosion and deposition) occur, sediment continuity for the change in elevation of the soil or sediment bed surface is expressed as:

$$\rho_b \frac{dz}{dt} = v_{se}C_s - v_rC_{sb} \quad (16)$$

where: z =elevation of soil surface or sediment bed [L]; ρ_b =bulk density of soil or bed sediments [M/L³]; and C_{sb} =concentration of particles in the soil or sediment bed [M/L³].

3.3. Chemical transport and fate submodel

The chemical transport and fate processes in the model include: (1) chemical partitioning and phase distribution; (2) advection-diffusion; (3) erosion; (4) deposition; (5) infiltration and transmission loss; and (6) mass transfer and transformation processes (chemical reactions). The model state variables are

chemical concentrations in overland runoff, soil, stream flow, and sediments. Any number of chemicals can be simulated.

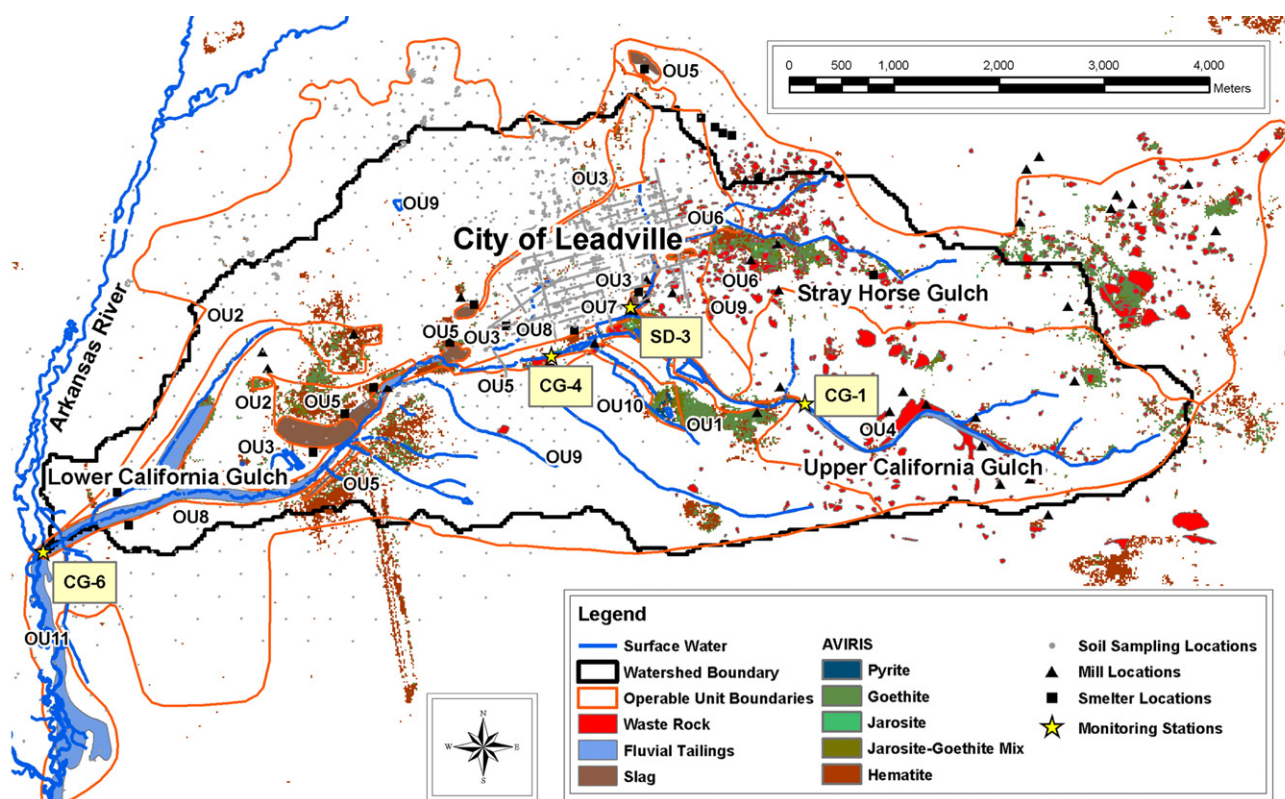
Metals and many other chemicals partition between dissolved, bound (complexed with dissolved organic compounds), and particulate phases (sorbed to particles). Chemical transport and interactions depend on chemical phase. The partition (or distribution) coefficient of a chemical is defined as the ratio of the chemical concentration in particulate form to the dissolved phase concentration. Similarly, the binding coefficient is defined as the ratio of the chemical concentration in bound form to the dissolved phase concentration. Partitioning and binding can be simulated on a solids concentration or organic carbon normalized basis (Thomann and Mueller, 1987). Particle-dependent partitioning is simulated as described by DiToro (1985). Assuming local equilibrium, the chemical phase distribution is simulated as (Thomann and Mueller, 1987; Chapra, 1997):

$$f_d = \frac{1}{1 + D_{oc}K_b + \sum_{n=1}^N m_n K_{p_n}} \quad (17)$$

$$f_b = \frac{D_{oc}K_b}{1 + D_{oc}K_b + \sum_{n=1}^N m_n K_{p_n}} \quad (18)$$

$$f_{p_n} = \frac{m_n K_{p_n}}{1 + D_{oc}K_b + \sum_{n=1}^N m_n K_{p_n}} \quad (19)$$

where: f_d =fraction of chemical in the dissolved phase [dimensionless]; f_b =fraction of chemical in the bound phase [dimensionless]; f_{p_n} =fraction of chemical in the particulate phase



Notes: OU = Operable Unit; AVIRIS = Airborne Visible-Infrared Imaging Spectrometer

Fig. 2 – California Gulch watershed: mine-waste distribution and monitoring stations.

Table 2 – California Gulch representative metal concentrations by media for each operable unit (OU)

OU	1	2	3	4	5	6	7	8	9	10	11	12	Investigation
Name	Yak Tunnel	Malta Gulch	Arkansas Valley Smelter	Upper California Gulch	Smelter Sites	Stay Horse Gulch and Starr Ditch	Apache Tailings	Colorado Zinc-Lead Tailings	Leadville Soils	Oregon Gulch Tailings	Arkansas River Floodplain	Surface Water and Sediments	
<i>Waste rock (mg/kg)</i>													
Cd				60	60	108			25				USEPA (1987a,b,c), WWC (1993a)
Cu				332	206	782			59				
Zn				11,100	4502	14,200			4040				
<i>Tailings (mg/kg)</i>													
Cd		61		52		81	12	55		13	55		USEPA (1987a,b,c), WWC (1993b), Golder (1997)
Cu		160		271		300	183	344		826	344		
Zn		7250		11,300		12,200	859	6320		1740	6320		
<i>Slag (mg/kg)</i>													
Cd			5		5				5				USEPA (1987a,b,c), MKC (1992)
Cu			570		570				570				
Zn			66,000		66,000				66,000				
<i>Soils (residential areas, smelter site “disturbed soils”) (mg/kg)</i>													
Cd	31	15				26		15	65	4			USEPA (1987a,b,c), Walsh (1992), CDM (1994)
Cu	110	250				206		247	175	118			
Zn	4568	2850				3291		3132	2163	573			
<i>Other soils (smelter site “undisturbed soils”) and sediments (mg/kg) (OU12)</i>													
Cd	15		15	15	15		15		15			200–7500	USEPA (1987a,b,c), Walsh (1992, 1993), CDM (1994), WWC (1993c, d), Golder (1996)
Cu	159		159	159	159		159		159			84–1260	
Zn	590		590	590	590		590		590			2–438	

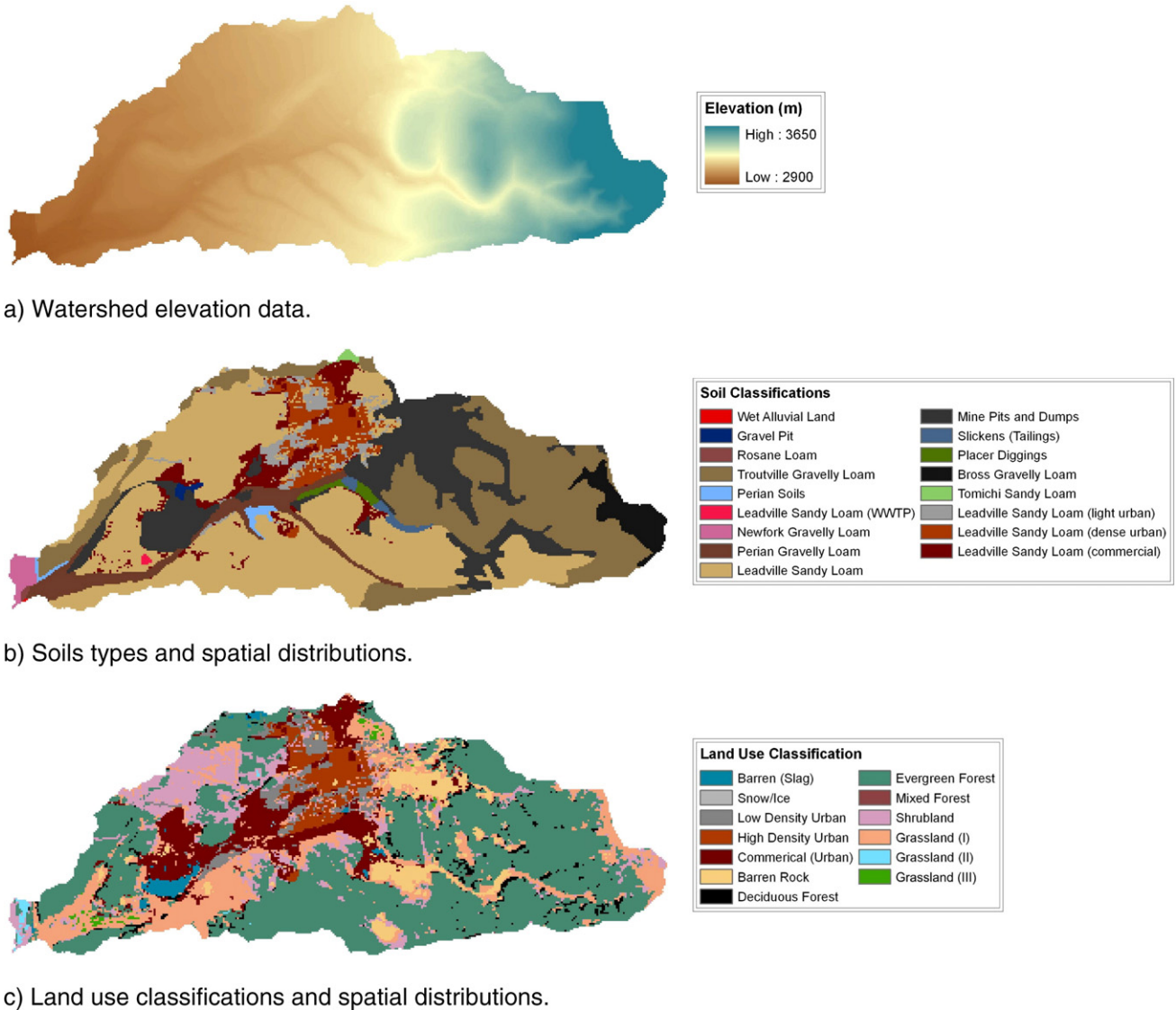


Fig. 3 – California Gulch elevation, soils, and land use data.

associated with particle n [dimensionless]; K_b =binding coefficient [L^3/M]; K_{p_n} =partition coefficient of chemical to particle n [L^3/M]; D_{oc} =concentration of dissolved organic compounds (or other binding agents) [M/L^3]; m_n =concentration of particle n [M/L^3]; and n =index for each particle type simulated = 1, 2, 3, etc. Note that the fractions of the total chemical mass in each phase sums to unity: $f_d + f_b + \sum_n f_{p_n} = 1$.

Advection and dispersion transport all chemical phases (i.e. the total chemical). Erosion and deposition transport particulate phases. Infiltration transports dissolved and bound phases. Analogous to sediment transport, for the overland plane in two dimensions the concentration of a chemical in a flow is expressed by chemical continuity:

$$\frac{\partial C_c}{\partial t} + \frac{\partial q_{cx}}{\partial x} + \frac{\partial q_{cy}}{\partial y} = \frac{1}{h} (J_{ec} - J_{dc} - J_{ic}) + \hat{W}_c \quad (20)$$

$$q_{cx} = v_x C_c - R_x \frac{\partial C_c}{\partial x} \quad (21a)$$

$$q_{cy} = v_y C_c - R_y \frac{\partial C_c}{\partial y} \quad (21b)$$

where: C_c =total chemical concentration in the water column [M/L^3]; q_{cx} , q_{cy} =total chemical transport flux in the x- or y-direction [M/L^2T]; J_{ec} =chemical erosion flux [M/L^2T]; J_{dc} =chemical deposition flux [M/L^2T]; J_{ic} =chemical infiltration flux [M/L^2T]; and \hat{W}_c =volumetric chemical point source/sink flux [M/L^3T].

Similarly, for the channel network in one dimension, the concentration of a chemical in a flow is also expressed by chemical continuity:

$$\frac{\partial C_c}{\partial t} + \frac{\partial q_{cx}}{\partial x} = \frac{1}{h} (J_{ec} - J_{dc} - J_{ic}) + \hat{W}_c. \quad (22)$$

Chemical erosion and deposition are directly coupled to corresponding transport fluxes for particles as (Thomann and Mueller, 1987):

$$J_{ec} = \sum_{n=1}^N v_{r_n} f_{p_{b_n}} C_{cb} \quad (23)$$

$$J_{dc} = \sum_{n=1}^N v_{se,n} f_{p,n} C_c \quad (24)$$

where: $v_{r,n}$ =resuspension velocity of particle n [L/T]; $v_{se,n}$ =effective settling velocity of particle n [L/T]; $f_{p,n}$ =fraction of total chemical in particulate phase associated with particle n in the water column [dimensionless]; $f_{pb,n}$ =fraction of total chemical in particulate phase associated with particle n in the soil/sediment bed [dimensionless]; C_c =total chemical concentration in the water column [M/L³]; and C_{cb} =total chemical concentration in the soil or sediment bed [M/L³].

Chemical infiltration is coupled to the water infiltration or transmission loss flux as:

$$J_{ic} = v_i (f_d + f_b) C_c \quad (25)$$

where: v_i =infiltration or transmission loss rate of water [L/T]. Dissolved and bound phase chemicals are subject to advection and other processes (e.g. retardation) during subsurface transport. For clarity, note that v_i in Eq. (25) was defined as f in Eq. (1).

Chemicals may also be subject to other mass transfer and transformation processes such as biodegradation, hydrolysis, oxidation, photolysis, and volatilization, and dissolution. The present model development focuses on chemical partitioning. Addition of capabilities to simulate these other chemical processes is the subject of ongoing development efforts as described by Johnson and Zhang (2006).

3.4. TREX features and implementation

A comparative overview of TREX features is presented in Table 1. A useful enhancement is the addition of point sources and sinks for flow, solids, and chemicals. Groundwater interactions with the land surface or streams could be represented as a series of time-variable point sources and sinks. This feature allows TREX to be externally coupled with groundwater flow and solute transport models such as MODFLOW (Harbaugh et al., 2000), HST3D (Kipp, 1997), and MT3DMS (Zheng and Wang, 1999). Beyond these enhancements, TREX is fully distributed and designed to be compatible with data from raster geographic information system (GIS) sources. Data describing elevation, soil types, land use, and contaminant distributions can be processed in a GIS and used as model inputs. Model outputs are also designed for post-processing with a GIS.

4. Screening-level model application: California Gulch watershed

To demonstrate the potential for using TREX to simulate chemical transport at the watershed scale, a screening-level application to the California Gulch watershed was developed. At this site, environmental impacts attributable to mine wastes include surface and groundwater contamination from acid drainage (low pH), elevated metal concentrations on the land surface and in-stream channels (water column and sediment bed), and ecological impairments (USEPA, 1987a,b,c; Walsh, 1992; WWC, 1993a,b,c,d; Walsh, 1993; CDM, 1994). Due to their toxicity to wildlife, metals of particular

concern are copper (Cu), cadmium (Cd), and zinc (Zn) (Clements et al., 2002). In response to rainfall and subsequent drainage, metals released from the gulch harm water quality and degrade aquatic habitat, particularly near the confluence with the Arkansas River (USEPA, 1987a; Techlaw, 2001).

4.1. Site description and characterization

California Gulch is part of a historical mining district located near Leadville, Colorado (USA). The site is in the headwaters of the Arkansas River basin and covers an area of 30 km². Approximately 2000 waste piles exist across the site (USEPA, 1987a). The watershed includes upper and lower reaches of California Gulch (CG), Stray Horse Gulch, Starr Ditch (SD), and several smaller drainages. Monitoring stations at CG-1, SD-3, CG-4, and CG-6 are shown in Fig. 2. Elevations in the watershed range from 2900 to 3650 m (9500 to 12,000 ft) and the average slope is 12.6%. The stream through upper California Gulch is narrow, steep and ephemeral. The stream meanders through lower California Gulch with a milder slope and perennial flow from ephemeral drainages. The Yak

Table 3 – Summary of model parameter values for California Gulch

Parameter	Range	Application
<i>Hydrologic variables</i>		
K_h (m/s)	1.5×10^{-6}	Sandy loams
	1.5×10^{-6} – 2.0×10^{-6}	Gravelly sandy loams
	1.5×10^{-6} – 2.8×10^{-6}	Pits and dumps
	1.0×10^{-6} – 1.5×10^{-6}	Diggings and tailings
	0 – 5.0×10^{-7}	Channel bed
Manning n	0.45	Forest
	0.30–0.45	Shrub and grassland
	0.15	Bare rock/sand
	0.05–0.15	Urban/commercial
	0.08–0.18	Channel bed
<i>Sediment transport variables (soils and sediments)</i>		
Mean diameter (mm)	256	Boulder
	128	Cobble
	16	Gravel
	0.50	Sand
	0.031	Silt
Settling speed (mm/s)	0.002	Clay
	1919	Boulder
	1357	Cobble
	479	Gravel
	36	Sand
K (tons/ac)	0.88	Silt
	0.0034	Clay
	0.05–0.28	Sandy loams
	0.05–0.15	Gravelly sandy loams
	0.02	Pits and dumps
C	0.02–0.64	Diggings and tailings
	0.04–0.06	Forest
	0.042–0.08	Shrub and grassland
	0.2	Bare rock/sand
	0.001–0.01	Urban/commercial
<i>Chemical transport variables</i>		
$\log K_d$	2.34	Cd
	3.24	Cu
	2.54	Zn

Tunnel mine water treatment works and Leadville wastewater treatment plant (WWTP) also contribute to surface drainage.

A database of field measurements collected as part of assessment and remediation efforts over the period 1984–2004 was compiled. To facilitate characterization, the site is divided into 12 operable units (OUs) shown in Fig. 2. Three basic types of mine waste are found at the site: waste rock, tailings, and slag. Metal concentrations in mine wastes were measured at representative locations (USEPA, 1987a,b,c; WCC, 1993a,b;

MKC, 1992; Golder, 1997). Metal concentrations in soils were measured at thousands of locations (USEPA, 1987a,b,c; Walsh, 1992, 1993; CDM, 1994). Stream bed sediments were sampled at a limited number of locations (WCC 1993c,d). Typical metal concentrations are summarized by OU in Table 2. These measurements were further augmented by surface distributions of pyritic mineral decomposition products (pyrite, goethite, jarosite, and hematite) determined using the Airborne Visible/Infrared Imaging Spectrometer (AVIRIS) (Swayze

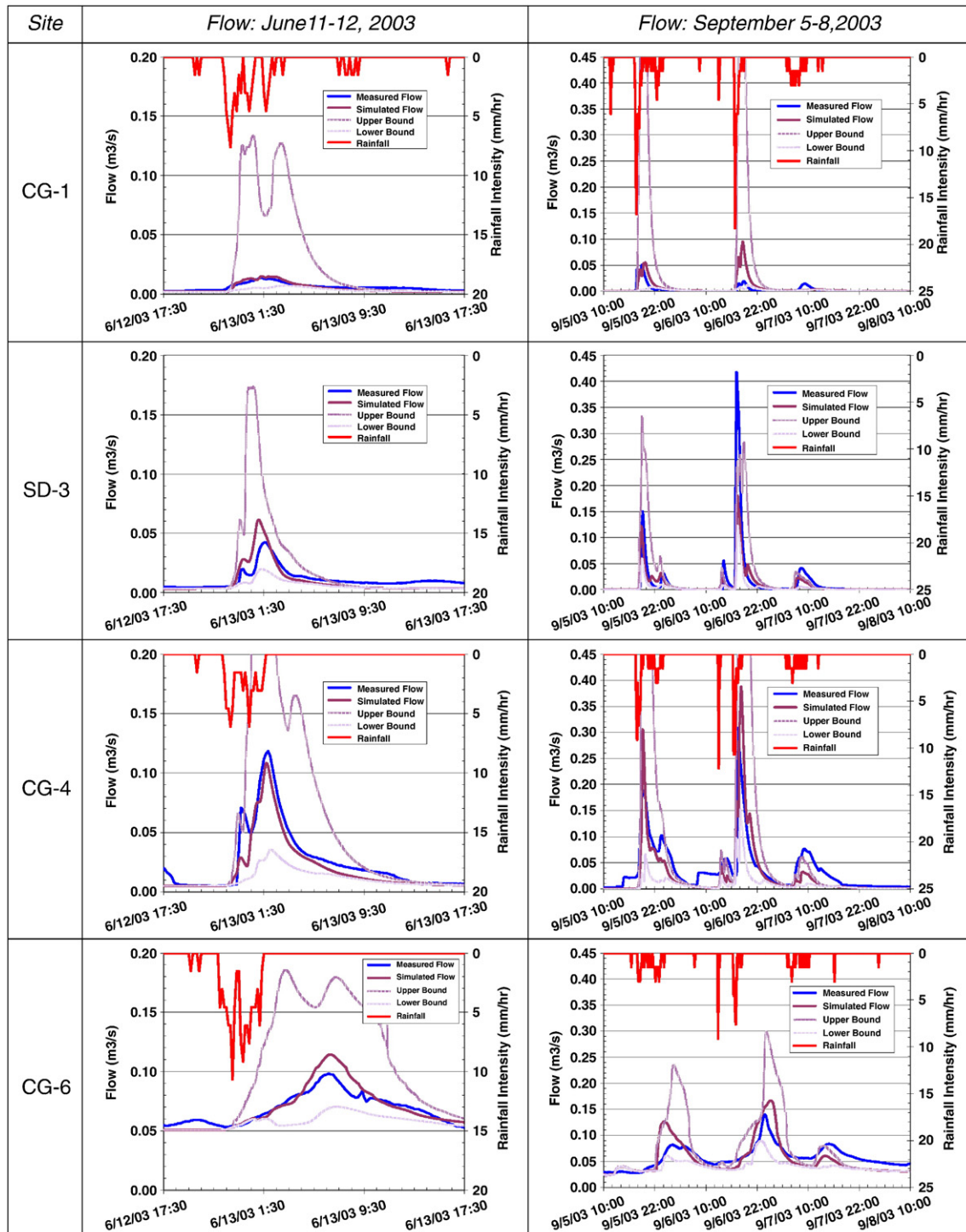


Fig. 4–Hydrologic calibration and validation results with uncertainty bounds.

et al., 2000). AVIRIS data are useful for identifying areas where chemicals from mine wastes have been transported over time (Fig. 2). The database includes digital elevation and land use data obtained from the U.S. Geological Survey (USGS) and soil survey information (USDA, 1975) including the Natural Resources Conservation Service (NRCS) Soil Survey Geographic (SSURGO) database (USDA, 1995). As part of site monitoring efforts, USEPA began to operate a series of automonitors in California Gulch starting in 2002. The automonitors measure stream flow (stage), precipitation, specific conductivity, water temperature, and pH. During 2002, data were collected at CG-1 and CG-6, initially at a 15-minute interval and later at a 10-minute interval. During 2003, precipitation and stream flow were measured at the CG-1, CG-4, and CG-6 monitoring stations (Fig. 2) at 10-minute intervals. Stream flow was also measured at the SD-3 monitoring station. These data were used to define watershed properties, forcing functions, boundary conditions, and initial conditions. The database also includes a limited number of total suspended solids (TSS) and metals concentration measurements as well as other surface water quality data collected at different times over the period 1984 to 2004 (WCC, 1993; Golder, 1996; RMC, 2001, 2002; TTRMC, 2003; CMC, 2004). Although they do not define time series information for specific rainfall-runoff events, these water quality data define the range of expected sediment and chemical transport responses for the system when they are paired with flow measurements.

4.2. Model organization and parameterization

The site was simulated at a 30-meter by 30-meter grid scale to describe surface topography and the spatial distribution of mine wastes. Based on digital elevation data (Fig. 3), the watershed area was delineated with 34,002 cells for the overland plane and 25 links (reaches) totaling 1395 nodes for the channel network, defining a total stream length of approximately 42 km (including both perennial streams and intermittent drainages). The watershed outlet is the California Gulch confluence with the East Fork of the Arkansas River. Particle sizes on the land surface and in the stream bed range from clays to boulders and were simulated as six state variables (classes): boulders, cobbles, gravel, sand, silt, and clay. Three chemical state variables were simulated: Cd, Cu, and Zn.

Within the watershed, 14 soil associations occur. Soils within the City of Leadville urbanized area were further subdivided by land use, resulting in a total of 17 soil classes in the model (Fig. 3). The characteristics (K_h , H_c , K , porosity, grain size distribution etc.) of each soil class were defined based on values reported in the NRCS SSURGO database as well as texture using the methods of Rawls et al. (1983, 1993). K_h values were adjusted during calibration to achieve agreement between measured and simulated runoff. In the overland plane, the soil column was represented as two layers with a total thickness of 15 cm. The total soil layer thickness was selected based on review of NRCS soils data that indicates the uppermost soil horizons can be underlain by a layer of

Table 4 – Hydrologic model performance evaluation summary

Event	Station	Metric ^a										NSEC	RMSE (%)
		Total volume (m ³)			Peak flow (m ³ /s)			Time to peak (h)					
		Observed	Simulated	RPD (%)	Observed	Simulated	RPD (%)	Observed	Simulated	RPD (%)			
June 11–12, 2003	CG-1	491	430	−12.4	0.014	0.015	+9.4	7.83	7.82	−0.2	0.62	30.6	
	SD-3	906	824	−9.1	0.042	0.061	+45.4	8.00	7.58	−5.2	0.34	59.4	
	CG-4	2136	1701	−20.4	0.118	0.108	−8.6	8.33	8.20	−1.6	0.88	37.9	
	CG-6	5606	6031	+7.6	0.098	0.114	+16.2	13.17	13.30	+1.0	0.69	10.3	
	All stations			−8.6			+15.6			−1.5			
September 5–8, 2003	CG-1												
	1st Peak	737	1541	+109	0.051	0.055	+8.9	9.00	9.80	+8.9	0.51	162	
	2nd Peak				0.020	0.095	+382	8.83	8.65	−2.1	−11.3	619	
	3rd Peak				0.014	0.003	−78.3	3.33	5.45	+63.5	0.37	190	
	SD-3												
	1st Peak	3570	2371	−33.6	0.150	0.122	−18.7	9.17	8.85	−3.4	0.62	153	
	2nd Peak				0.412	0.181	−56.6	7.16	7.40	+3.3	0.58	164	
	3rd Peak				0.041	0.023	−43.3	2.33	1.60	−31.4	0.52	136	
	CG-4												
	1st Peak	9571	7138	−25.4	0.188	0.306	+62.5	9.33	9.15	−2.0	0.67	60.4	
	2nd Peak				0.308	0.388	+25.8	7.50	8.25	+10.0	0.43	83.1	
	3rd Peak				0.077	0.033	−56.9	3.00	2.75	−8.3	0.10	108	
	CG-6												
	1st Peak	14,997	14,276	−4.8	0.082	0.127	+55.9	16.00	14.35	−10.3	−0.22	45.2	
	2nd Peak				0.140	0.167	+19.0	13.83	15.20	−9.9	0.14	32.6	
	3rd Peak				0.084	0.060	−27.6	8.83	7.95	−10.0	−1.28	33.0	
	All stations			+11.3									
1st Peak						+27.1			−1.7				
2nd Peak						+92.5			+5.3				
3rd Peak						−51.5			+3.4				

^a Notes: RPD=Relative Percent Difference; NSEC=Nash-Sutcliffe Efficiency Coefficient; RMSE=Root Mean Square Error.

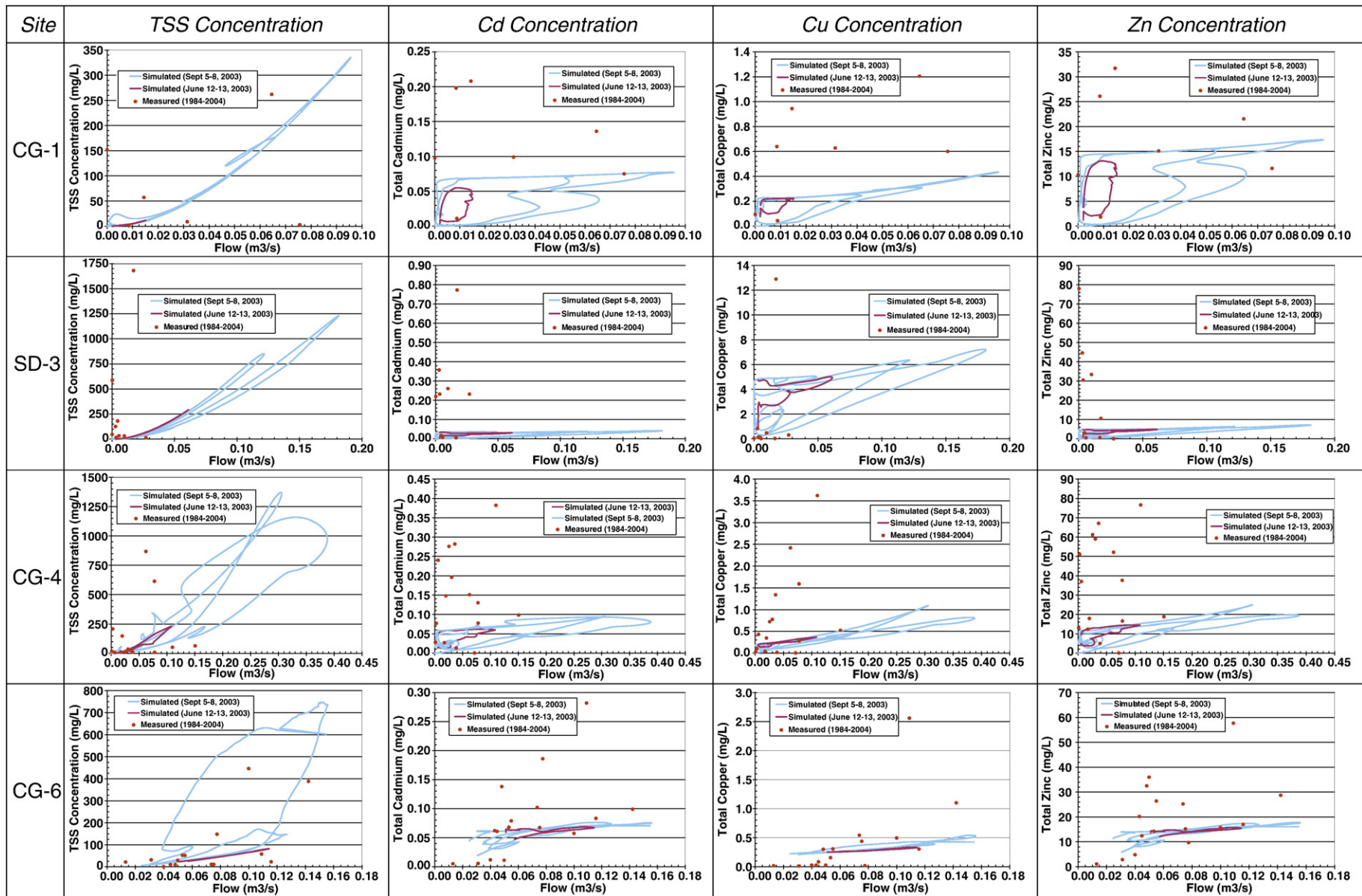


Fig. 5 – Sediment and chemical transport calibration and validation results.

coarser material at a depth of 12 to 23 cm and further underlain by even coarser layers that contain a significant fraction of cobble and larger-sized material.

In the channel network, bed characteristics (porosity, grain size distribution etc.) were defined from field observations. The sediment bed was represented as two layers with a total thickness of 10 cm. This total sediment bed thickness was selected to permit at least some description of the limited extent of sediment availability from the stream bed. Samples collected from the gulch indicate that in some locations the channel bed has a relatively thin layer of finer sediment (sand and gravel) that overlies layers of much coarser material that includes large rock fragments or bed rock (hardpan).

Within the watershed, 13 land use classes occur (Fig. 3). The characteristics (roughness, rainfall interception depth, C, P, etc.) of each land use were defined based on descriptions in the USGS National Land Cover Database (NCLD). Surface roughness (Manning *n*) values were selected from tabulated values presented by Woolhiser et al. (1990) and USACE (1998). Interception depths were based on tabulated values presented by Linsley et al. (1982) and Woolhiser et al. (1990). Land cover and management practice factors were selected based on the values presented by Wischmeier and Smith (1978) as summarized by Julien (1998).

Chemical concentrations and distributions in soil and sediment were estimated from site characterization and AVIRIS data. Two-phase partitioning was simulated, where the total concentration is the sum of the dissolved and particulate phases. Partition (distribution) coefficients for Cd, Cu, and Zn were defined as described by Sauvé et al. (2000, 2003) and Lu and Allen (2001). Chemical partitioning in surface water is sensitive to numerous environmental factors, including pH, which has been close to 6.0 in recent years (2001–2004).

4.3. Calibration and validation

A June 12–13, 2003 storm was used for calibration and a September 5–8, 2003 storm for validation. There was no precipitation for several days preceding either event, indicating that prevailing antecedent soil moisture conditions for the site were generally low. This is consistent with site-specific hydrologic analyses presented by SAI (1997). Flow records collected by USEPA in 2003 were used to calibrate the model. Discharges from the Leadville WWTP and stream inputs from groundwater were determined from flow records and were represented as flow point sources.

The calibration procedure focused on properly simulating runoff volume, peak flow, and the time to peak flow at the

Table 5 – Sediment and chemical transport model performance evaluation summary

Station	Variable	Measured concentration (mg/L) ^a	Simulated concentration (mg/L) ^a	Modeled period
		Median (low–high)	Median (low–high)	
CG-1	TSS	37.3 (1.0–386)	8.42 (3.77–11.9) 49.3 (3.52–335)	June 03 Sept 03
	Cd	0.044 (0.011–1.82)	0.045 (0.007–0.055) 0.068 (0.001–0.077)	June 03 Sept 03
	Cu	0.600 (0.098–15.1)	0.219 (0.111–0.225) 0.245 (0.019–0.435)	June 03 Sept 03
	Zn	1.39 (0.208–31.7)	11.5 (2.33–13.1) 14.5 (0.343–17.4)	June 03 Sept 03
			47.1 (6.92–293) 30.1 (4.01–1231)	June 03 Sept 03
SD-3	TSS	40.4 (4.0–1680)	47.1 (6.92–293) 30.1 (4.01–1231)	June 03 Sept 03
	Cd	0.232 (0.005–0.772)	0.030 (0.016–0.033) 0.028 (0.002–0.042)	June 03 Sept 03
	Cu	0.229 (0.017–12.9)	0.059 (0.042–0.095) 0.056 (0.014–0.235)	June 03 Sept 03
	Zn	6.88 (0.031–78.0)	4.45 (2.67–5.00) 4.38 (0.324–7.23)	June 03 Sept 03
			13.6 (1.87–233) 26.9 (1.62–1370)	June 03 Sept 03
CG-4	TSS	30.0 (9.0–868)	13.6 (1.87–233) 26.9 (1.62–1370)	June 03 Sept 03
	Cd	0.139 (0.013–0.382)	0.057 (0.013–0.062) 0.050 (0.002–0.095)	June 03 Sept 03
	Cu	0.476 (0.017–3.62)	0.225 (0.137–0.367) 0.209 (0.026–1.09)	June 03 Sept 03
	Zn	37.3 (4.95–76.6)	12.3 (3.73–14.6) 11.2 (0.380–25.0)	June 03 Sept 03
			31.7 (11.7–82.6) 27.2 (4.47–747)	June 03 Sept 03
CG-6	TSS	30.0 (1.0–446)	31.7 (11.7–82.6) 27.2 (4.47–747)	June 03 Sept 03
	Cd	0.068 (0.005–0.282)	0.061 (<0.001–0.069) 0.044 (<0.001–0.076)	June 03 Sept 03
	Cu	0.228 (0.011–2.56)	0.261 (0.006–0.336) 0.240 (0.002–0.542)	June 03 Sept 03
	Zn	16.4 (1.10–57.7)	13.9 (0.074–15.3) 11.2 (0.034–17.8)	June 03 Sept 03

^aMeasurements were for the period 1984–2004. Low/high refer to the lowest/highest values measured in the field or simulated by the model.

outlet (Station CG-6) and other monitoring stations (CG-1, CG-4, and SD-3). The model was then expected to yield reasonably good results in terms of runoff hydrographs, sediment transport in suspension and metals at the other internal station in the watershed. Model parameters subject to calibration were effective hydraulic conductivity (K_h), roughness (Manning n), soil erodibility (K), land cover factor (C); and the chemical distribution (partition) coefficient (K_d). Calibrated parameter values are summarized in Table 3. With one exception, parameter values for the validation simulation were identical to those for calibration. The exception was that June storm K_h values for two soil types that occur at elevations greater than 3350 m were 50% lower than values for the September storm to account for frozen soil conditions that existed as determined from snowpack monitoring data for California Gulch (Gertson, 2004), NRCS snowpack telemetry (SNOTEL) data from a nearby gage at an elevation of 3475 m, and air temperature data from the Lake County Airport weather station at an elevation of 3056 m.

Hydrologic submodel performance was evaluated by comparing model results and measurements for three metrics: total flow volume, peak flow discharge, and time to peak flow. Rainfall intensities, measured and simulated flow discharges at Stations CG-1, SD-3, CG-4, and CG-6 are presented in Fig. 4 for both the calibration and validation events. Hydrologic submodel uncertainty limits are also presented in Fig. 4. These limits were determined from upper and lower bound combinations for K_h (+100%, –33%) and Manning n (+100%, –50%) using a logic tree approach (Mishra, 2001). Performance evaluations for these simulations are presented in Table 4.

Solids and chemical transport submodel performance was evaluated by comparing model results with measurements as functions of flow discharge. Measured and simulated TSS, Cd, Cu, and Zn concentrations as functions of discharge at Stations CG-1, SD-3, CG-4, and CG-6 are presented in Fig. 5. Model performance for dissolved metals is similar to performance for total metals. TSS and metals show expected hysteresis patterns for their concentration-discharge rating curves that are typically caused by changes in flow acceleration during the rising and falling limbs of runoff hydrographs. Similar behavior has been observed for overland and channel flow in other systems (House and Warwick, 1998; Seeger et al., 2004; Bowes et al., 2005). Performance evaluations for these simulations are presented in Table 5. Additional results detailing solids and chemical transport submodel uncertainty limits are presented in Velleux (2005). Model results for a 1-in-100-year storm event, associated bounding calculations, and estimates of toxic impacts are also presented in Velleux (2005) and Velleux et al. (2006b).

5. Discussion

High quality data were available to construct and evaluate the hydrologic components of the California Gulch application. TREX model parameterization for the calibration event in June shows that flow volumes, peak flows, and times to peak were all accurately simulated at the outlet and at internal gauging stations. The total flow volume relative percent different (RPD) was –8.6%, the peak flow RPD was +15.6%, and the time to peak RPD was –1.5%. The average Nash-Sutcliffe Efficiency Coeffi-

cient (NSEC) was 0.64 and Root Mean Square Error (RMSE) was 34.6%. For the validation event, simulated hydrographs generally had the proper overall shape with an average total flow volume RPD of +11.3%. However, differences in the scale and timing of peak flows resulted in lower NSEC and higher RMSE values.

In-stream data to evaluate sediment and chemical transport components of model application to California Gulch are less complete but nonetheless typical of the extent of data that might be available for a high mountain, mine-waste-contaminated watershed. In general, TSS and metal concentrations for the two rainfall events in 2003 are in the range of measurements for the period 1984 to 2004. This is encouraging because the model was able to simultaneously reproduce the hydrographs and concentration ranges for four different constituents (TSS, Cd, Cu, and Zn) at four locations. Each metal has a different spatial distribution on the land surface and in the stream bed. Good agreement with field measurements for metals transport is an indication of successful sediment transport simulation because metals transport is particle mediated.

It is worth noting that substantial remediation efforts to minimize erosion of mine wastes from the land surface were completed between 1984 and 2004. In particular, the Apache Tailings area (OU 7) and Starr Ditch (the stream between Stray Horse Gulch and California Gulch) have undergone extensive remediation. Consequently, the tendency of simulated metal concentrations for these storm events in 2003 to be near the low range of measurements at SD-3 and CG-4 may be a reflection of the impact of remediation near those monitoring stations. It is also worth noting that the model calibration and validation effort represent a screening-level application intended to demonstrate the basic operation and utility of TREX chemical transport components rather than an exhaustive exploration of the site-specific characteristics of California Gulch. Model evaluation at other mine-waste sites with more extensive water quality data, particularly time series data, is warranted.

TREX was developed as a tool to assess potential remediation efforts of metals contaminants at mine-waste sites. Two key features of this model are: (i) the ability to represent the horizontal and vertical distributions of site features and contaminants; and (ii) to integrate water, soils and chemicals into a single model framework. In the context of California Gulch, the model was used to examine impacts associated with the contemporary distribution of wastes across a Superfund site. TREX could also be used to evaluate environmental management alternatives for a site where remediation has not yet begun to assess potential changes in spatial distributions of site characteristics. Similarly, TREX could also be used to examine operational considerations of waste placement at active mine sites.

6. Conclusions

TREX is a spatially distributed numerical model to assess the watershed transport and fate of contaminants. This model simulates event hydrology, sediment transport, and chemical transport and fate processes including: (1) chemical erosion, advection, and deposition; (2) chemical partitioning and phase distribution; and (3) chemical infiltration and redistribution.

Model functionality was demonstrated by a screening-level application to the California Gulch watershed. Using a data-base of observations for the period 1984–2004, site hydrology, sediment transport, and chemical transport and fate were simulated for two events. The model reproduced measured flow volumes, peak flows, and times to peak for these events. Average relative percent differences for flow volume estimates were –8.6% for the calibration event and +11.3% for the validation event. The model also reproduced measured ranges of TSS and total metal concentrations.

Acknowledgments

Funding for this research was provided by the Department of Defense through the Center for Geosciences/Atmospheric Research at Colorado State University, under Cooperative Agreement DAAD19-02-2-0005 with the Army Research Laboratory, and the USEPA Science to Achieve Results (STAR) Program, under Grant Number R-82951501-0 as part of the Rocky Mountain Regional Hazardous Substance Research Center. Field data for California Gulch were provided courtesy of Karmen King and Don Stephens of the Colorado Mountain College Natural Resource Management Institute and Stan Christensen and Mike Holmes of the USEPA Region VIII Superfund Division. Additional support for model development was provided by Billy E. Johnson of the U.S. Army Corps of Engineers-Engineer Research and Development Center-Environmental Laboratory under Contract 5-37207. Figures and tables were prepared with assistance from Tara Santimauro and John Sondey of HydroQual, Inc. The authors also thank two anonymous reviewers for their comments and suggestions.

REFERENCES

- Abbott MB, Bathurst JC, Cunge JA, O, 'Connell PE, and Rasmussen J. An introduction to the European Hydrological System — Système Hydrologique Européen, SHE, 2: structure of a physically-based distributed modeling system. *J Hydrol* 1986;87(1–2):61–77.
- Abdullrazzak M, Morel-Seytoux H. Recharge from an ephemeral stream following wetting front arrival to water table. *Water Resour Res* 1983;19(1):194–200.
- Ambrose RB, Martin JL, Wool TA. WASP5, A hydrodynamic and water quality model — Model theory, user's manual, and programmer's guide. Athens, Georgia: U.S. Environmental Protection Agency, Office of Research and Development, Environmental Research Laboratory; 1993.
- Bowes M, House W, Hodgkinson R, Leach D. Phosphorus-discharge hysteresis during storm events along a river catchment: the River Swale, UK. *Water Res* 2005;39(5):751–62.
- CDM. Final Soils Investigation Data Report California Gulch CERCLA site Leadville, Colorado (Four Volumes). Denver, Colorado: Camp, Dresser, and McKee, Inc.; 1994.
- Chapra SC. Surface Water-Quality Modeling. New York, New York: McGraw-Hill Companies, Inc.; 1997. 844 p.
- Clements W, Carlisle D, Courtney L, Harrahy E. Integrating observational and experimental approaches to demonstrate causation in stream biomonitoring studies. *Environ Toxicol Chem* 2002;21(6):1138–46.
- CMC. Final Site Wide Water Quality Summary for the Sampling Events Conducted the year of 2003. Leadville, Colorado: Colorado Mountain College, Natural Resource Management Institute; 2004.
- DiToro DM. A particle interaction model of reversible organic chemical sorption. *Chemosphere* 1985;14(9–10):1503–38.
- Downer CW, Ogden FL. GSSHA: model to simulate diverse stream flow producing processes. *J Hydrol Eng* 2004;9(3):161–74.
- Engelund F, Hansen E. A monograph on sediment transport in alluvial streams. Copenhagen, Denmark: Teknisk Forlag; 1967. 62 p.
- England Jr JF, Velleux ML, Julien PY. Two-dimensional simulations of extreme floods on a large watershed. *J Hydrol* 2007;347(1–2):229–41.
- Ewen J, Parkin G, O'Connell PE. SHETRAN: distributed river basin flow and transport modeling system. *J Hydrol Eng* 2000;5(3):250–8.
- Exner FM. Über die Wechselwirkung zwischen Wasser und Geschiebe in flüssen, vol. 134. Sitzungber. Acad. Wissenschaften Wien Math. Naturwiss. Abt. 2a; 1925. p. 165–80.
- Freyberg D. Modeling the effects of time-dependent wetted perimeter on infiltration from ephemeral channels. *Water Resour Res* 1983;19(2):559–66.
- Gertson J. California Gulch Superfund Site, 2003 Snowcover Characteristics Report. Buena Vista, Colorado: SourceWater Consulting; 2004.
- Gessler J. The beginning of bedload movement of mixtures investigated as natural armoring in channels. Pasadena, California: California Institute of Technology; 1967. 89p.
- Golder. Surface Water Remedial Investigation Report California Gulch Site Leadville, Colorado (Two Volumes). Lakewood, Colorado: Golder Associates, Inc.; 1996.
- Golder. Field Investigation Data Report for the Apache Tailings Supplemental Remedial Investigation. Lakewood, Colorado: Golder Associates Inc.; 1997.
- Green WH, Ampt GA. Studies on soil physics, 1: the flow of air and water through soils. *J Agric Sci* 1911;4(1):11–24.
- Harbaugh AW, Banta ER, Hill MC, McDonald MG. MODFLOW-2000, the U.S. Geological Survey modular ground-water model — user guide to modularization concepts and the ground-water flow process. U.S. Geological survey, Denver, Colorado. Open-File Report 00-92; 2000. 121 p.
- House W, Warwick M. Hysteresis of the solute concentration/discharge relationship in rivers during storms. *Water Res* 1998;32(8):2279–90.
- IMCC. Inactive and abandoned non-coal mines: a scoping study. Interstate Mining Compact Commission, Herndon, Virginia. Report Prepared by Resource Management Associates, Clancy, Montana. Cooperative Agreement X-81 7900-01-O (July); 1992.
- Johnson BE, Zhang Z. CTT&F: Distributed sources chemical transport, transformation and fate sub-model. Vicksburg, MS: U.S. Army Engineer Research and Development Center; 2006. ERDC TN-EQT-06-1. 17 p.
- Johnson BE, Julien PY, Molnar DK, Watson CC. The two-dimensional upland erosion model CASC2D-SED. *J Am Water Resour Assoc* 2000;36(1):31–42.
- Julien PY. Erosion and Sedimentation. Cambridge, UK: Cambridge University Press; 1998. 280 p.
- Julien PY. River Mechanics. Cambridge, UK: Cambridge University Press; 2002. 434 p.
- Julien PY, Saghafian B. CASC2D User's Manual — A Two Dimensional Watershed Rainfall-Runoff Model. Fort Collins, Colorado: Department of Civil Engineering, Colorado State University; 1991. Report CER90-91PYJ-BS-12. 66 p.
- Julien PY, Rojas R. Upland erosion modeling with CASC2D-SED. *Int J Sediment Res* 2002;17(4):265–74.
- Julien PY, Saghafian B, Ogden FL. Raster-based hydrologic modeling of spatially-varied surface runoff. *Water Resour Bull*, AWRA 1995;31(3):523–36.
- Kilinc MY, Richardson EV. Mechanics of soil erosion from overland flow generated by simulated rainfall. *Hydrology Papers*,

- Number 63. Fort Collins, Colorado: Colorado State University; 1973.
- Kipp Jr KL. Guide to the revised heat and solute transport simulator: HST3D version 2. U.S. Geological Survey, Denver, Colorado. Water Resources Investigations Report 97-4157; 1997. 149 p.
- Krone RB. Flume studies of the transport of sediments in estuarial shoaling processes. Final Report. Berkeley, California: Hydraulic Engineering Laboratory and Sanitary Engineering Research Laboratory, University of California; 1962.
- Li RM, Stevens MA, Simons DB. Solutions to Green-Ampt infiltration equations. *J Irrig Drain Div, ASCE* 1976;102 (IR2):239–48.
- Linsley RK, Kohler MA, Paulhus JH. *Hydrology for Engineers*. Third Edition. New York, New York: McGraw-Hill Book Company; 1982. 508 p.
- Lu Y, Allen H. Partitioning of copper onto suspended particulate matter in river waters. *Sci Total Environ* 2001;277(1–3):119–32.
- Mishra S. Dealing with uncertainty in environmental model predictions. *EOS, Trans Am Geophys Union* 2001;82(47):565 (November).
- MKC. Report for Zinc Slag Pile Remedial Investigation at the California Gulch Site Leadville, Colorado. Denver, Colorado: Morrison Knudsen Corporation, Environmental Services Division; 1992.
- Ogden FL, Julien PY. CASC2D: a two-dimensional, physically-based, Hortonian hydrologic model. In: Singh VP, Frevert D, editors. *Mathematical Models of Small Watershed Hydrology and Applications*. Littleton, Colorado: Water Resources Publications; 2002. p. 69–112.
- Partheniades E. Estuarine sediment dynamics and shoaling processes. In: Herbich JB, editor. *Harbors, Navigation Channels, Estuaries, and Environmental Effects*. Handbook of Coastal and Ocean Engineering Houston, Texas: Gulf Publishing Company; 1992. p. 985–1071.
- Rawls WJ, Brakensiek DL, Miller N. Green-Ampt infiltration parameters from soils data. *J Hydraul Eng* 1983;109(1):62–9.
- Rawls WJ, Ahuja LR, Brakensiek DL, Shirmohammadi A. Infiltration and soil movement. In: Maidment DR, editor. *Handbook of Hydrology*. New York, New York: McGraw-Hill, Inc.; 1993. p. 5.1–5.51.
- RMC. Synoptic Sampling of Stray Horse Gulch/Starr Ditch and California Gulch, Spring 2001. Longmont, Colorado: Rocky Mountain Consultants, Inc.; 2001.
- RMC. Synoptic Sampling of California Gulch and Arkansas River, Spring 2002. Longmont, Colorado: Rocky Mountain Consultants, Inc.; 2002.
- Rojas R. 2002. GIS-based Upland Erosion Modeling, Geovisualization and Grid Size Effects on Erosion Simulations with CASC2D-SED. Ph.D. dissertation, Department of Civil Engineering, Colorado State University, Fort Collins, Colorado.
- Seeger M, Errea M, Begueria S, Arnaez J, Marti C, Garcia-Ruiz J. Catchment soil moisture and rainfall characteristics as determinant factors for discharge/suspended sediment hysteretic loops in a small headwater catchment in the Spanish Pyrenees. *J Hydrol* 2004;288(3–4):299–311.
- SAI. Hydrologic Analysis of the California Gulch Watershed. Fort Collins, Colorado: Simons and Associates, Inc.; 1997.
- Sauvé SF, Hendershot W, Allen HE. Solid-solution partitioning of metals in contaminated soils: dependence on pH, total metal burden, and organic matter. *Environ Sci Technol* 2000;34 (7):1125–31.
- Sauvé SF, Manna S, Turmel MC, Roy AG, Courchesne F. Solid-solution partitioning of Cd, Cu, Ni, Pb, and Zn in the organic horizons of a forest soil. *Environ Sci Technol* 2003;37(22):5191–6.
- Swayze G, Smith K, Clark R, Sutley S, Pearson R, Vance J, et al. Using imaging spectroscopy to map acidic mine waste. *Environ Sci Technol* 2000;34(1):47–54.
- TechLaw. Second Five-Year Review Report for California Gulch. Lakewood, Colorado: TechLaw, Inc.; 2001.
- Thomann RV, Mueller JA. *Principles of Surface Water Quality Modeling and Control*. New York, New York: Harper and Row Publishers, Inc.; 1987. 644 p.
- TTRMC. Synoptic Sampling of Stray Horse Gulch/Starr Ditch, California Gulch, and the Arkansas River, May 2003. Longmont, Colorado: Tetra Tech RMC; 2003.
- USACE. HEC-1 flood hydrograph package user's manual. U.S. Army Corps of Engineers, Hydraulic Engineering Center, Davis, CA. (Report: CPD-1A, June 1998.); 1998.
- USDA. Soil Survey of Chaffee-Lake Area, Colorado. Washington, D.C.: U.S. Department of Agriculture, Soil Conservation Service; 1975.
- USDA. Soil survey geographic (SSURGO) data base: data use information. U.S. Department of Agriculture, National Resource Conservation Service, National Soil Survey Center, Washington, D.C. Miscellaneous Publication Number 1527; 1995. 110 p.
- USEPA. California Gulch Superfund Site Phase I Remedial Investigation Report. Region VIII, Denver, Colorado: U.S. Environmental Protection Agency; 1987a.
- USEPA. Appendices: California Gulch Superfund Site Remedial Investigation Report (Two Volumes). Region VIII, Denver, Colorado: U.S. Environmental Protection Agency; 1987b.
- USEPA. Interpretive Addenda: California Gulch Superfund Site Remedial Investigation Report. Region VIII, Denver, Colorado: U.S. Environmental Protection Agency; 1987c.
- USEPA. Managing Environmental Problems at Inactive and Abandoned Metals Mine Sites. Washington, D.C.: U.S. Environmental Protection Agency, Office of Research and Development; 1996. EPA/625/R-95/007 (October).
- Velleux ML, 2005. Spatially distributed model to assess watershed contaminant transport and fate. Ph.D. dissertation, Department of Civil Engineering, Colorado State University, Fort Collins, Colorado.
- Velleux M, Westenbroek S, Ruppel J, Settles M, Endicott D. A User's Guide to IPX, the In-Place Pollutant Export Water Quality Modeling Framework, Version 2.7.4. Grosse Ile, Michigan: U.S. Environmental Protection Agency, Office of Research and Development, National Health and Environmental Effects Research Laboratory, Mid-Continent Ecology Division, Large Lakes Research Station; 2001. 179 pp. EPA/600/R-01/079.
- Velleux ML, England JF, Julien PY. TREX Watershed Modeling Framework User's Manual: Model Theory and Description. Colorado State University, Fort Collins, Colorado: Department of Civil Engineering; 2006a. 83 p.
- Velleux ML, Julien PY, Rojas-Sanchez R, Clements WH, England JF. Simulation of metals transport and toxicity at a mine-impacted watershed: California Gulch, Colorado. *Environ Sci Technol* 2006b;40(22):6996–7004.
- Walsh. Soil Inventory and Map California Gulch Study Area Leadville, Colorado. Boulder, Colorado: Walsh and Associates, Inc.; 1992.
- Walsh. Final Smelter Remedial Investigation Report California Gulch Site Leadville, Colorado (Two Volumes). Boulder, Colorado: Walsh and Associates, Inc.; 1993.
- WCC. Mine Waste Piles Remedial Investigation Report (Draft, Three Volumes). Denver, Colorado: Woodward-Clyde Consultants; 1993a.
- WCC. Tailings Disposal Area Remedial Investigation Report (Draft, Four Volumes). Denver, Colorado: Woodward-Clyde Consultants; 1993b.
- WCC. Surface Water Remedial Investigation Report (Draft, Three Volumes). Denver, Colorado: Woodward-Clyde Consultants; 1993c.
- WCC. Aquatic Ecosystem Characterization Report (Draft). Denver, Colorado: Woodward-Clyde Consultants; 1993d.
- Wicks JM, Bathurst JC. SHESED: a physically based, distributed erosion and sediment yield component for the SHE hydrological modeling system. *J Hydrol* 1996;175(1–4):213–38.

- Wischmeier W, Smith D. Predicting rainfall erosion losses: a guide to conservation planning. Agricultural Handbook 537. Washington, D.C.: U.S. Department of Agriculture; 1978. 58 p.
- Woolhiser DA, Smith RE, Goodrich DC. KINEROS, A Kinematic Runoff and Erosion Model: Documentation and User Manual. U.S. Department of Agriculture, Agriculture Research Service; 1990. ARS-77 (March, 1990).
- Zheng C, Wang PP. MT3DMS, a modular three-dimensional multi-species transport model for simulation of advection, dispersion and chemical reactions of contaminants in groundwater systems; documentation and user's guide. U.S. Army Engineer Research and Development Center Contract Report SERDP-99-1, Vicksburg, Mississippi; 1999. 202 p.