

APPENDIX II

II.1 Goodwin Creek DEM, Land Use, Soil Type, and Watershed Definition at Different Spatial

Resolution-----II-2

Figure II.1.1 DEM, watershed definition, soil type, and land use at 30-m-----II-2

Figure II.1.2 DEM, watershed definition, soil type, and land use at 90-m-----II-3

Figure II.1.3 DEM, watershed definition, soil type, and land use at 150-m-----II-4

Figure II.1.4 DEM, watershed definition, soil type, and land use at 210-m-----II-5

Figure II.1.5 DEM, watershed definition, soil type, and land use at 270-m-----II-6

Figure II.1.6 DEM, watershed definition, soil type, and land use at 330-m-----II-7

II.2 Percentage of the Area Covered by each Soil Type for each Grid Size and Sub-basin-----II-8

Figure II.2.1 Percentage of the area covered by each soil type in sub-basin 4-----II-8

Figure II.2.2 Percentage of the area covered by each soil type in sub-basin 6-----II-8

Figure II.2.3 Percentage of the area covered by each soil type in sub-basin 7-----II-9

Figure II.2.4 Percentage of the area covered by each soil type in sub-basin 8-----II-9

Figure II.2.5 Percentage of the area covered by each soil type in sub-basin 14-----II-10

II.3 Percentage of the Area Covered by each Soil Type for each Grid Size and Sub-basin-----II-11

Figure II.3.1 Percentage of the area covered by each land use type in sub-basin 4-----II-11

Figure II.3.2 Percentage of the area covered by each land use type in sub-basin 6-----II-11

Figure II.3.3 Percentage of the area covered by each land use type in sub-basin 7-----II-12

Figure II.3.4 Percentage of the area covered by each land use type in sub-basin 7-----II-12

Figure II.3.5 Percentage of the area covered by each land use type in sub-basin 14-----II-13

II.1 GOODWIN CREEK DEM, LAND USE, SOIL TYPE, AND WATERSHED DEFINITION AT DIFFERENT SPATIAL RESOLUTION

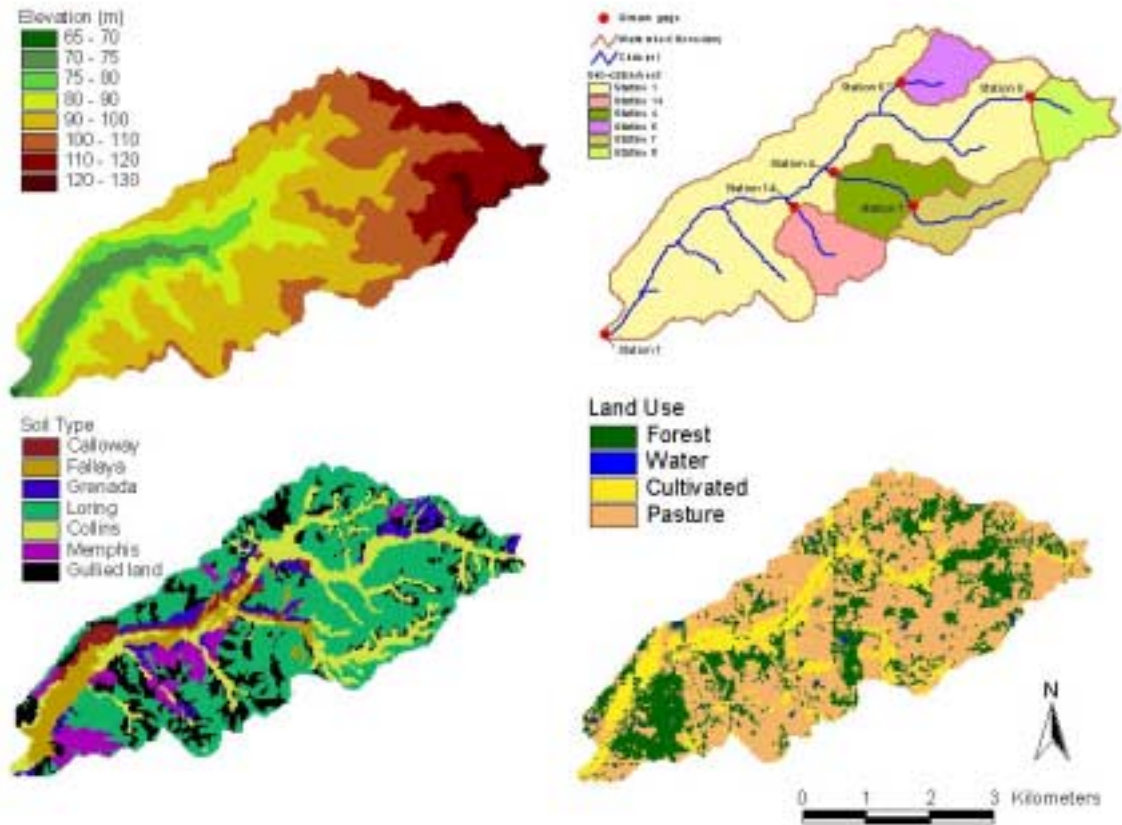


Figure II.1.1 DEM, watershed definition, soil type, and land use at 30-m

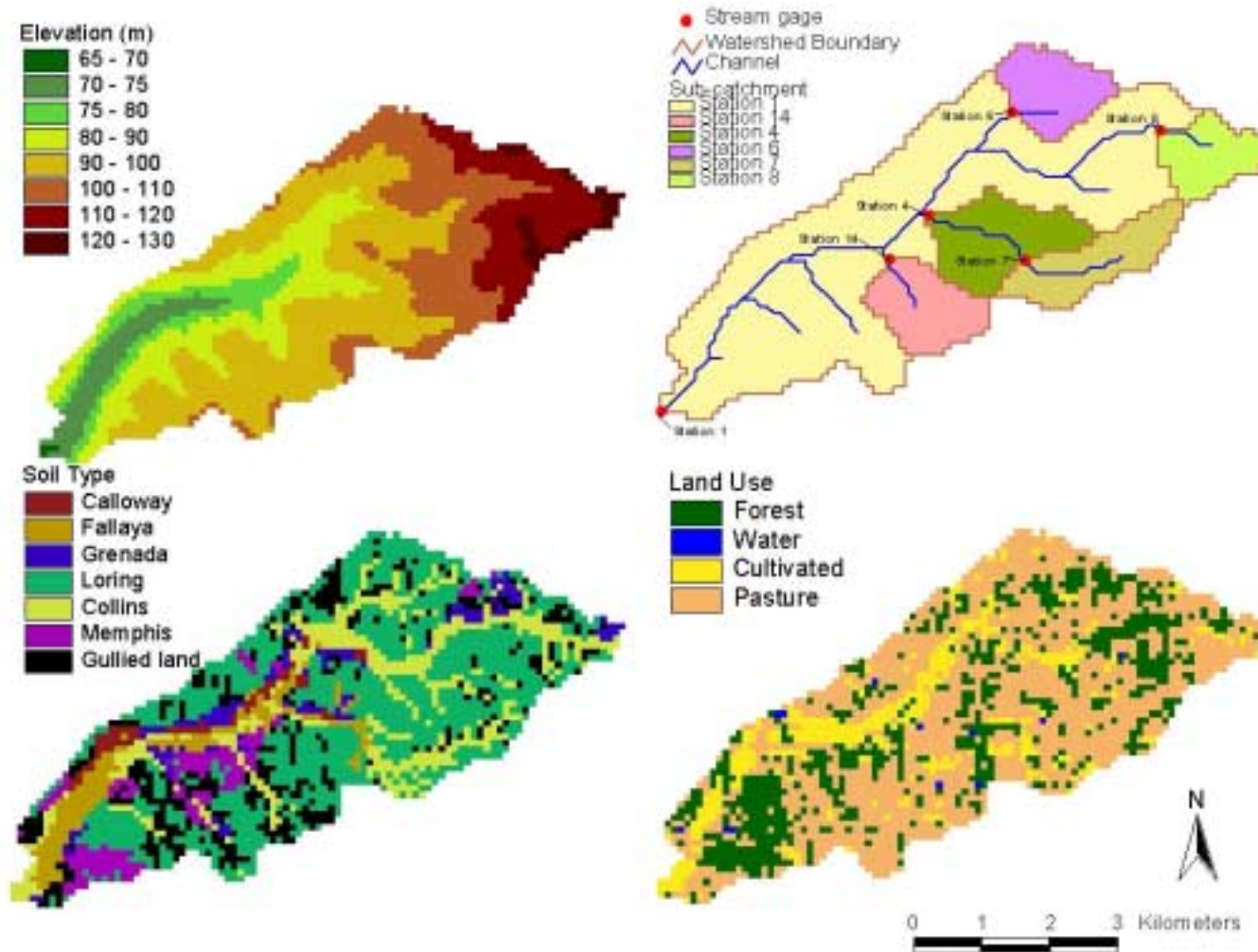


Figure II.1.2 DEM, watershed definition, soil type, and land use at 90-m

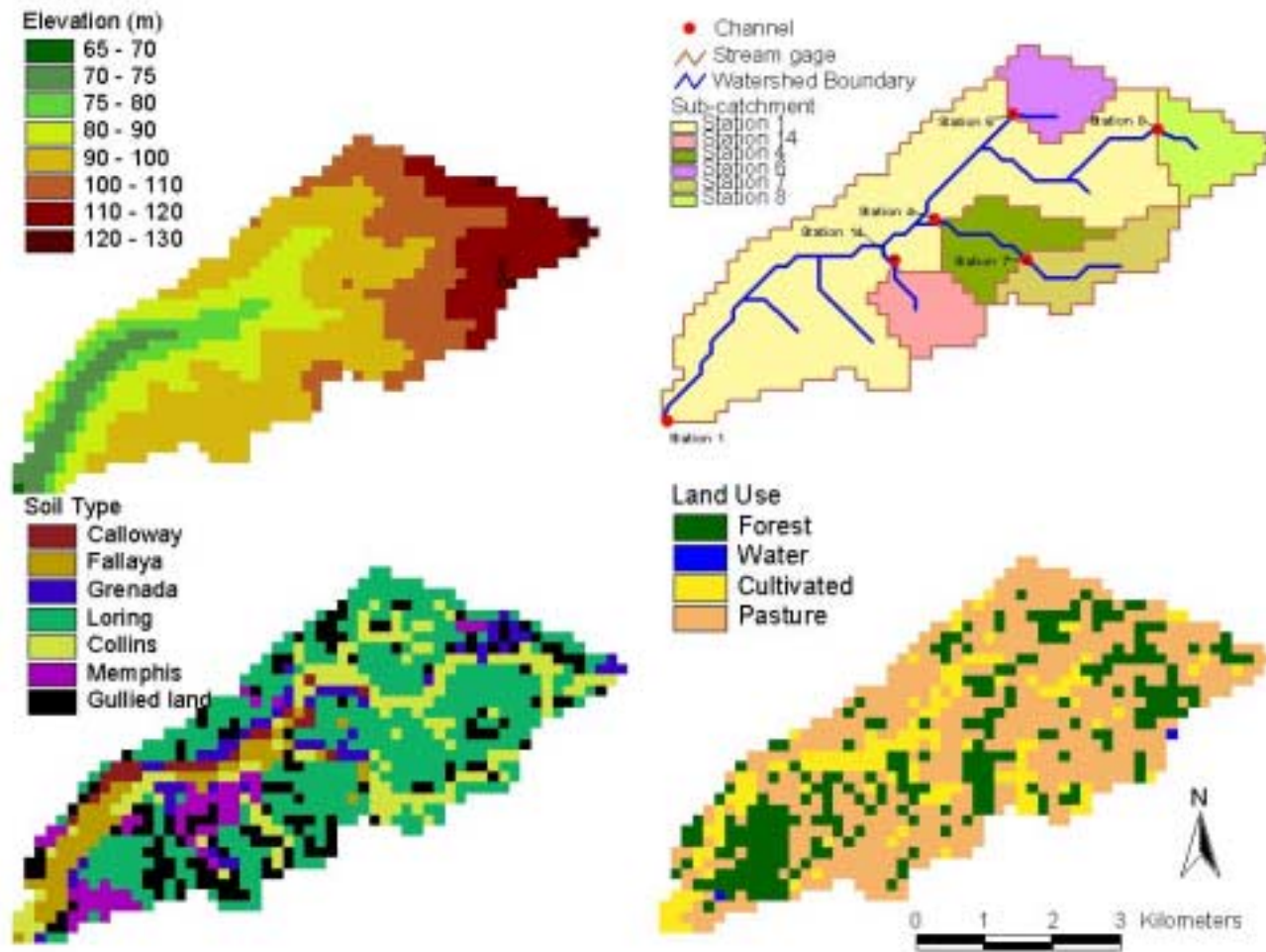


Figure II.1.3 DEM, watershed definition, soil type, and land use at 150-m

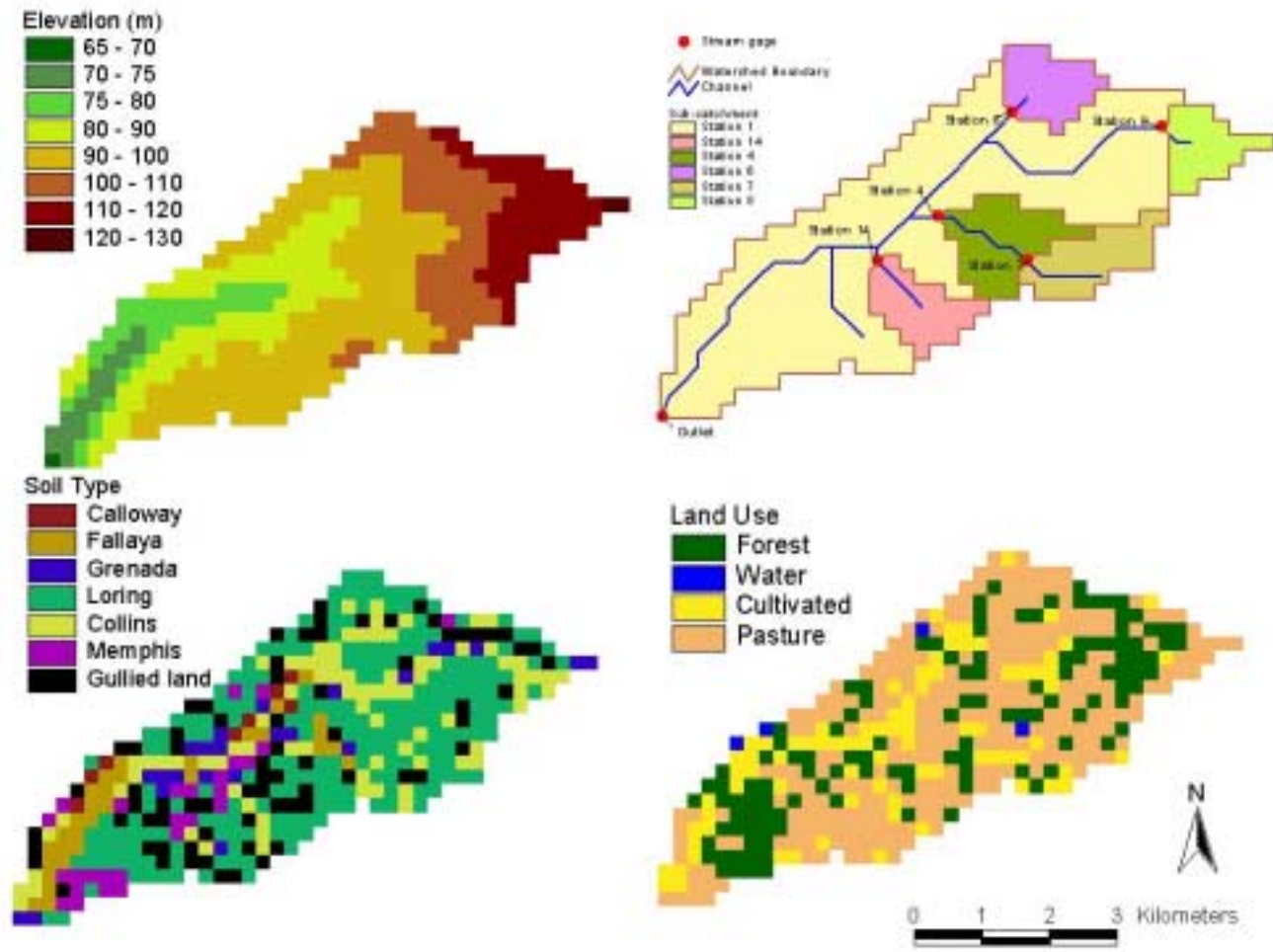


Figure II.1.4 DEM, watershed definition, soil type, and land use at 210-m

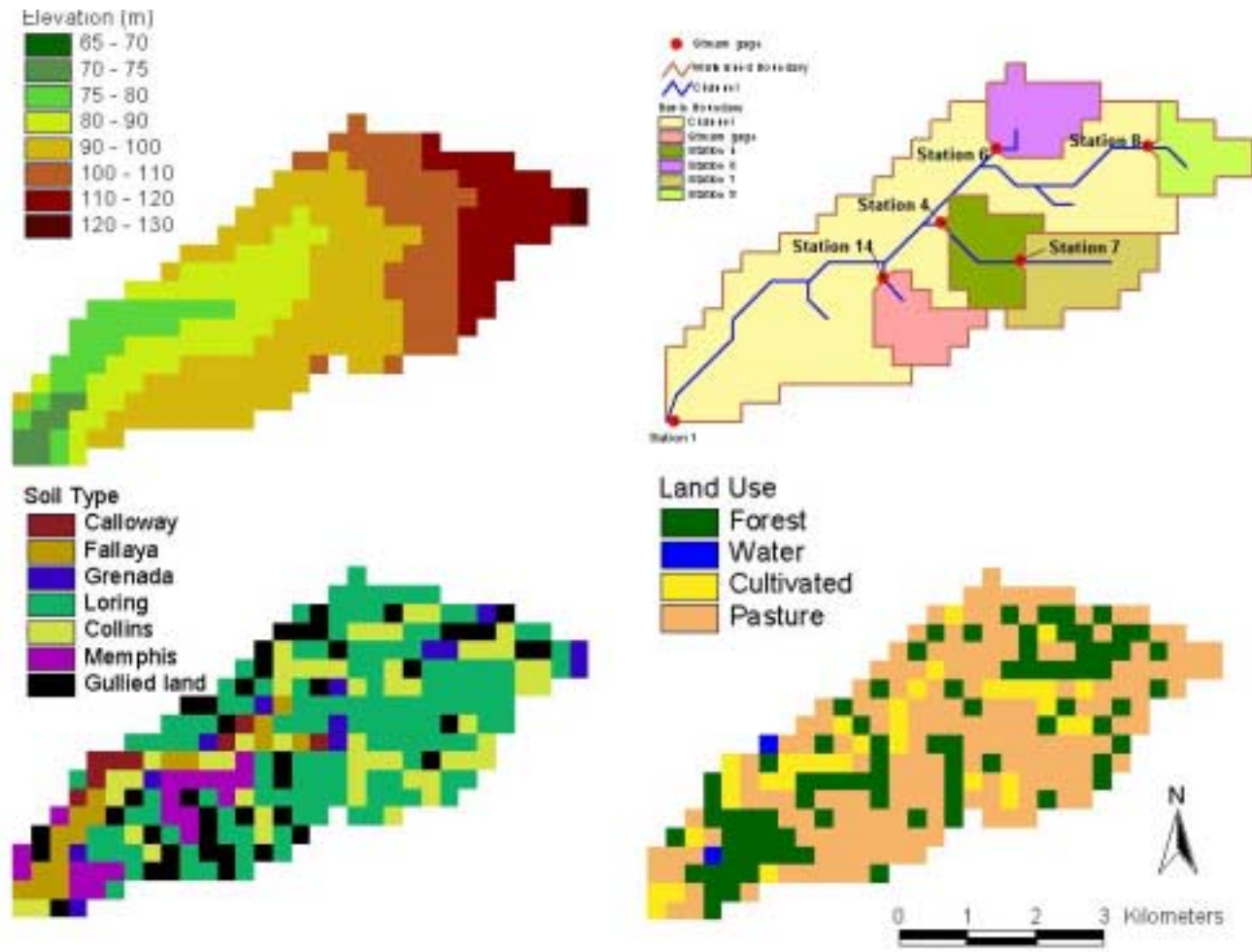


Figure II.1.5 DEM, watershed definition, soil type, and land use at 270-m

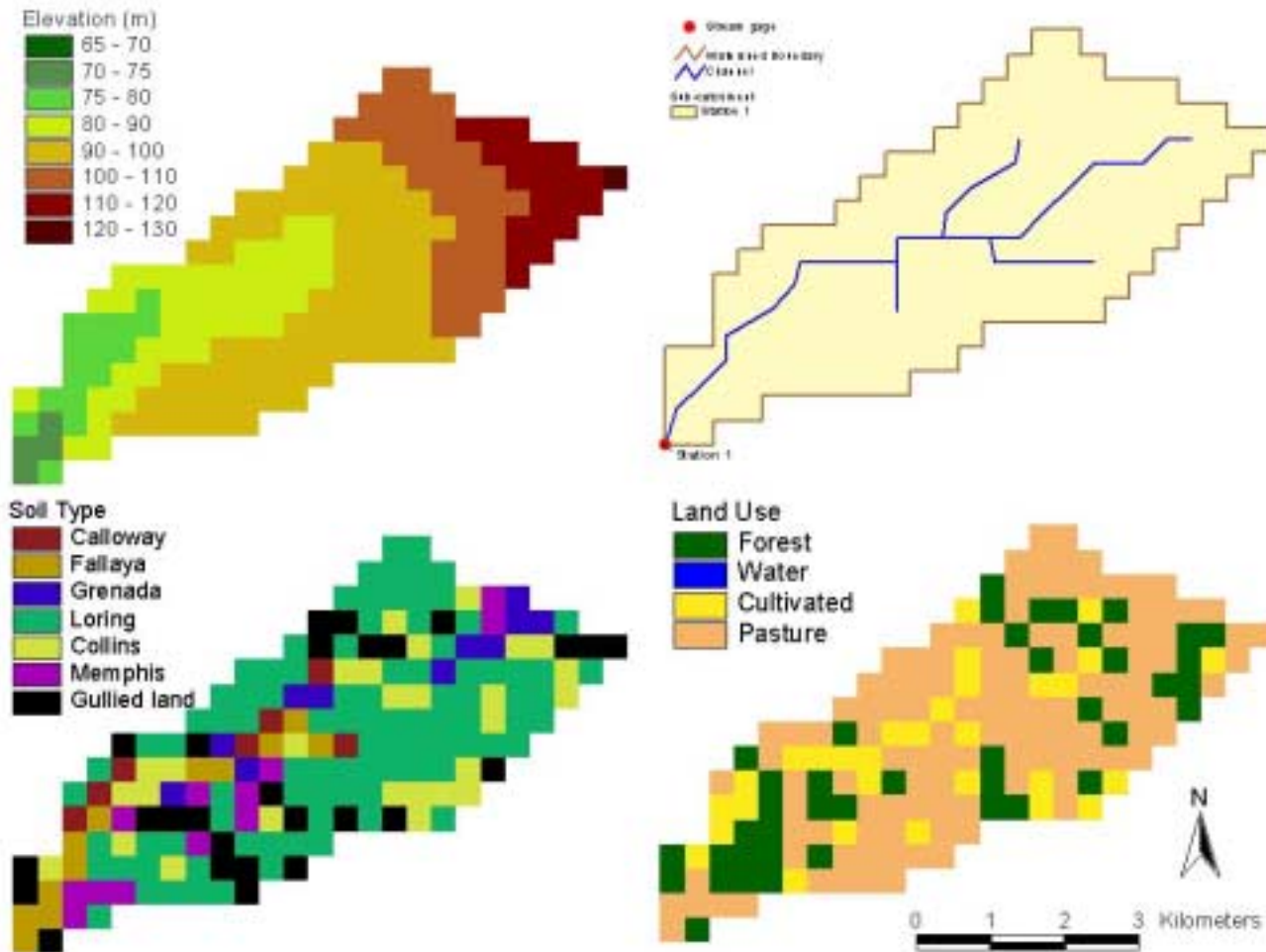


Figure II.1.6 DEM, watershed definition, soil type, and land use at 330-m

II.2 PERCENTAGE OF THE AREA COVERED BY EACH SOIL TYPE FOR EACH GRID SIZE AND SUB-BASIN

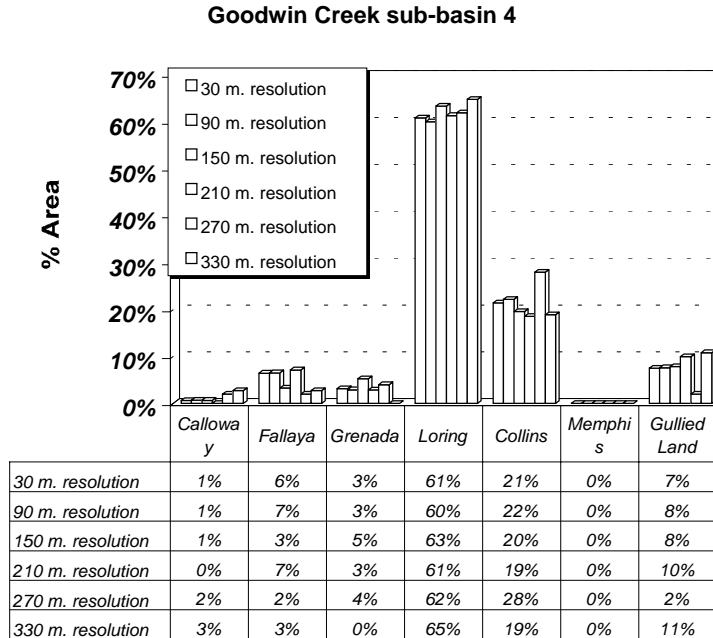


Figure II.2.1 Percentage of the area covered by each soil type in sub-basin 4

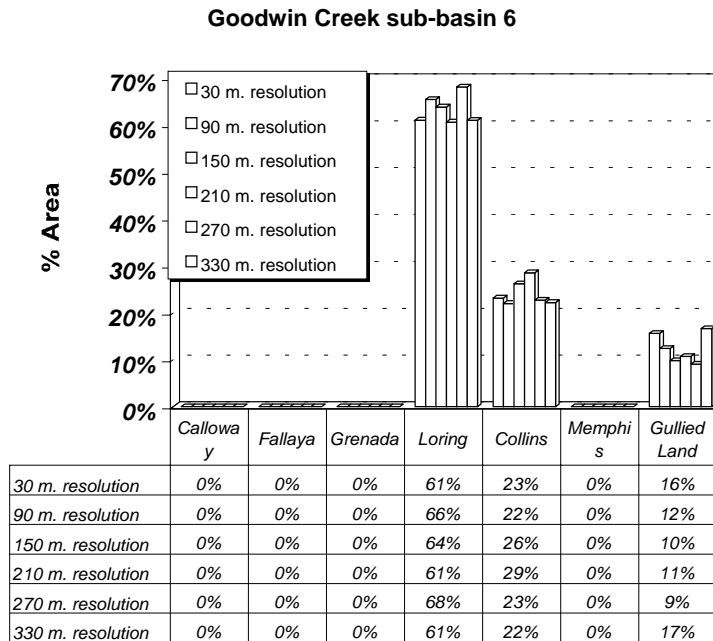


Figure II.2.2 Percentage of the area covered by each soil type in sub-basin 6

Goodwin Creek sub-basin 7

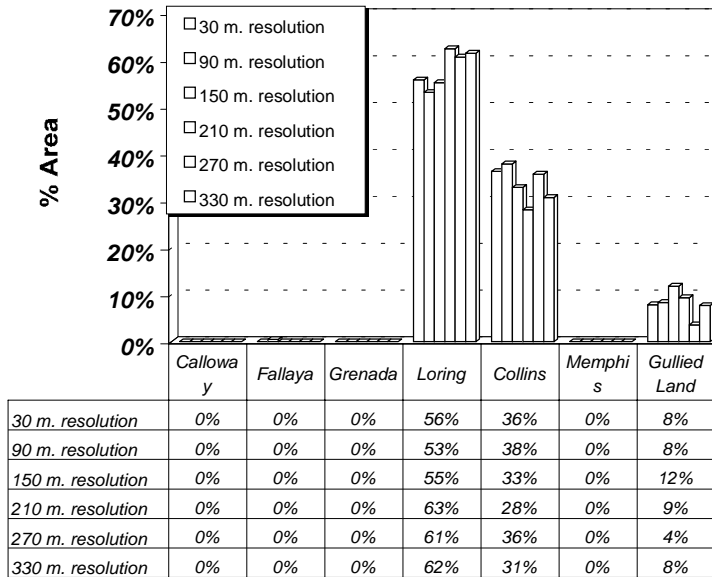


Figure II.2.3 Percentage of the area covered by each soil type in sub-basin 7

Goodwin Creek sub-basin 8

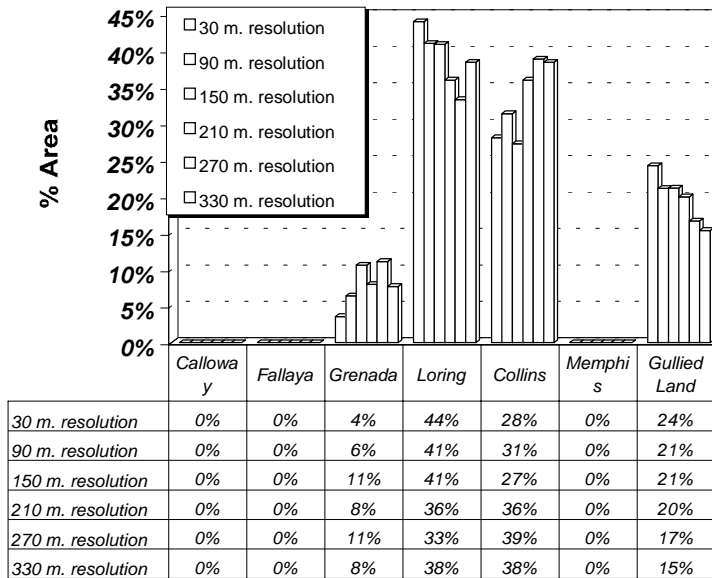


Figure II.2.4 Percentage of the area covered by each soil type in sub-basin 8

Goodwin Creek sub-basin 14

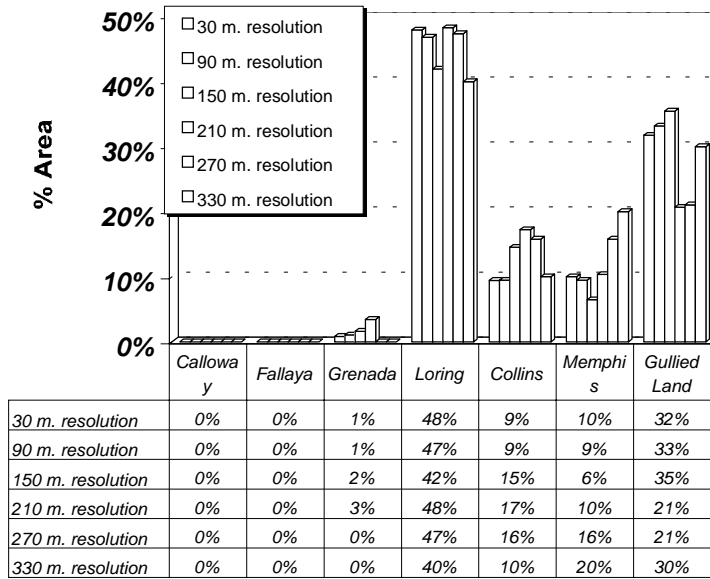


Figure II.2.5 Percentage of the area covered by each soil type in sub-basin 14

II.3 PERCENTAGE OF THE AREA COVERED BY EACH SOIL TYPE FOR EACH GRID SIZE AND SUB-BASIN

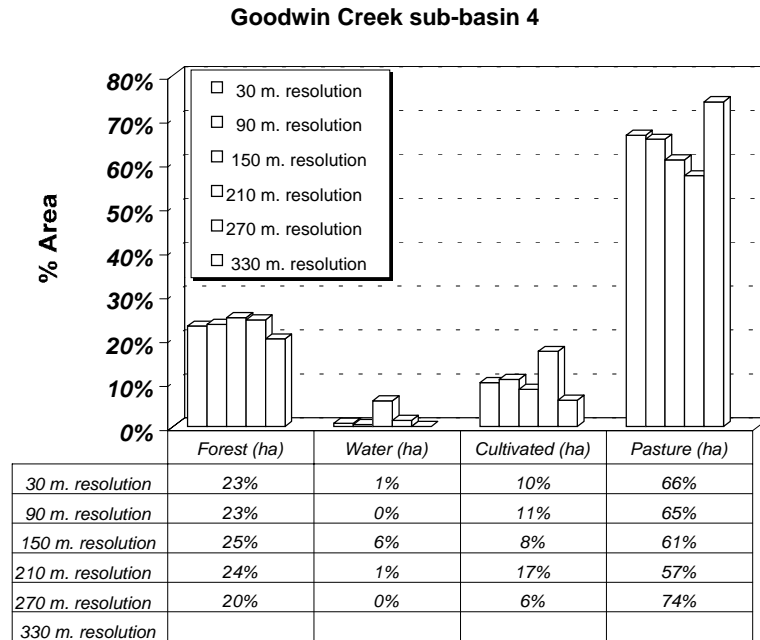


Figure II.3.1 Percentage of the area covered by each land use type in sub-basin 4

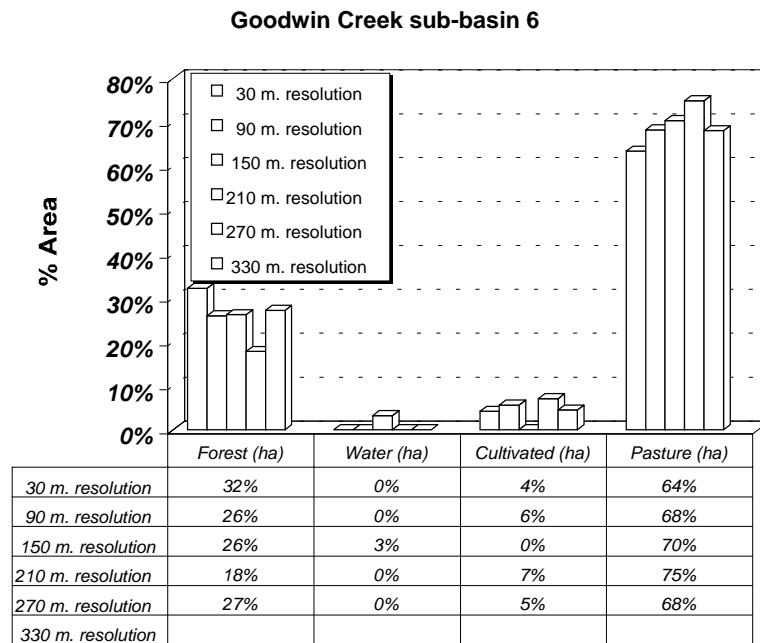


Figure II.3.2 Percentage of the area covered by each land use type in sub-basin 6

Goodwin Creek sub-basin 7

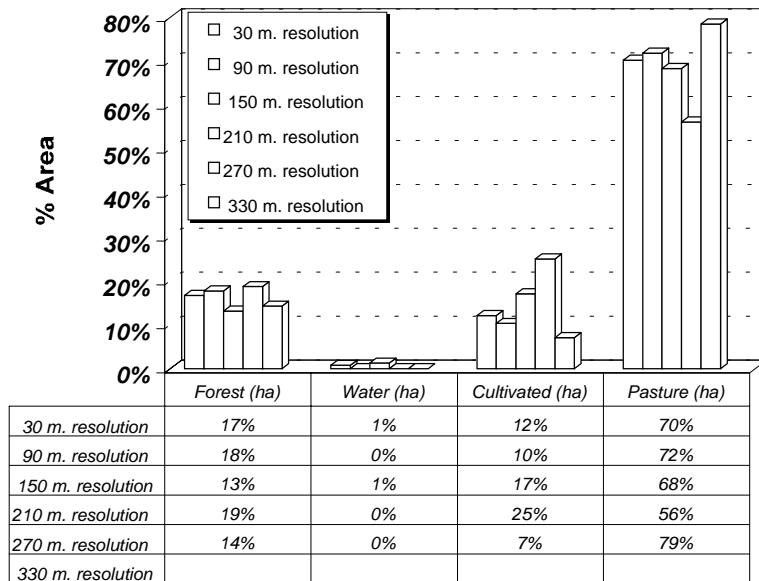


Figure II.3.3 Percentage of the area covered by each land use type in sub-basin 7

Goodwin Creek sub-basin 8

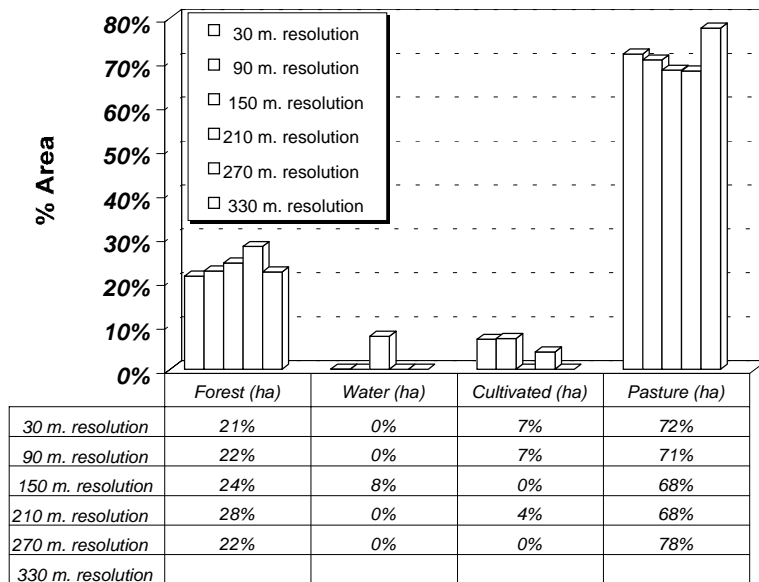


Figure II.3.4 Percentage of the area covered by each land use type in sub-basin 7

Goodwin Creek sub-basin 14

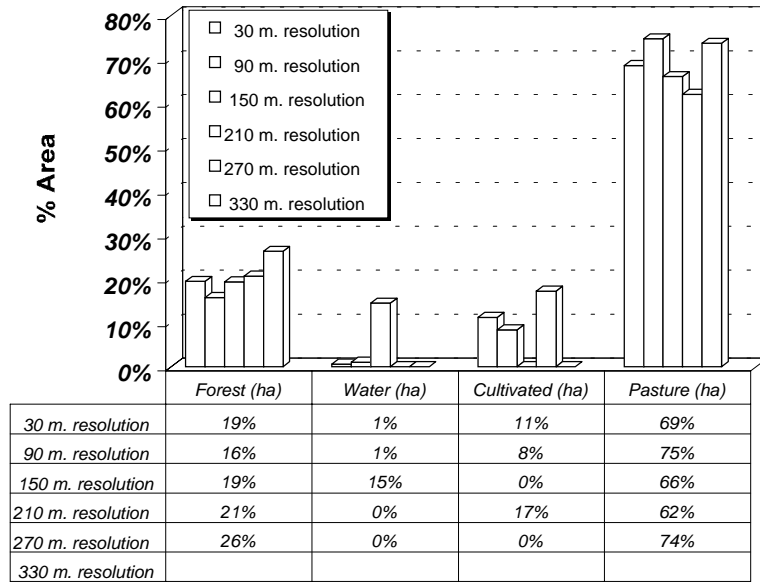


Figure II.3.5 Percentage of the area covered by each land use type in sub-basin 14